

# CIVITAS Training “Inclusive mobility”



Source: WRI Ross Center for Sustainable Cities

|                                 |   |
|---------------------------------|---|
| <b>Date</b>                     | <b>Monday 11 April 2016, 13:00h-17:30h</b><br>In conjunction with the SUMP Conference   |
| <b>Location</b>                 | Maritim Hotel & Congress Centrum Bremen, Hollerallee 99, 28215 Bremen (SUMP conference venue)   |
| <b>Target group</b>             | Local and regional authorities, public transport authorities  |
| <b>Costs</b>                    | Training is free of charge (in case of no-show to the training we will send you an invoice to cover the costs made by the organisers) |
| <b>Certification</b>            | This training is certified by the CIVITAS Learning Centre   |
| <b>Registration<sup>1</sup></b> | By email: <a href="mailto:learningcentre@civitas.eu">learningcentre@civitas.eu</a>  |
| <b>Language</b>                 | English   |

<sup>1</sup> Registration for this workshop will NOT provide you with access to the MOBI/STARS/PTP-Cycle Final event. To register for this event please follow the link <http://www.polisnetwork.eu/publicevents/319/61/STARS-PTP-Cycle-MOBI-projects-final-conference>

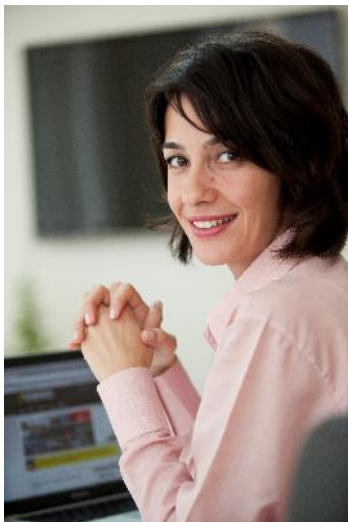
## Welcome!

Mobility is of vital importance for citizens to participate in society. It enables us to access public services, shops, jobs, friends and family etc. Vulnerable population groups (lower incomes, aged) are appointed to (forms of) public transport. However, it is an increasing challenge for public (transport) authorities to maintain/guarantee a minimum level of service. This might be a 'social' threat for this particular population group as they are depending on services to access their jobs and other vital services.

At the same time the 'sharing economy' is grass rooting. Car sharing, uber and blabla car like initiatives are emerging. These might offer opportunities to tackle the challenge a growing number of cities is facing.

Through expert presentations and interactive exercises participants of the training will learn about the topic and about examples/solutions to tackle challenges with regard to 'inclusive mobility'

## Key experts



**Arzu Tekir**, Director, TURKEY, WRI Ross Center for Sustainable Cities (<http://www.wrirosscities.org>) @WRICities

Arzu Tekir is the Director of WRI Ross Center for Sustainable Cities. She joined the WRI's EMBARQ team as the Operations Manager in Turkey center, in January 2011 and she appointed as the country director in December 2011. As the new Director she restructured the organization and managed the process of establishing Sustainable Transportation Association in Turkey.

Arzu joined EMBARQ with more than ten years of work experience in strategic planning, project coordination, and securing finance for large projects in both the public and private sectors. Prior to joining EMBARQ, Arzu worked as a consultant and conducted several market research projects in

New York and wrote business plans and reports for investors and telecom companies who would like to develop innovative IT projects in Istanbul. She also worked as European Union Projects Coordinator and External Relations Director for IT companies, directed the financing of research and development projects and initiated the firms' participation in several key European Union (EU) organizations. The Director of Social Sciences Institute of Kadir Has University, Istanbul, invited her to design a course program to MBA students for one semester. As a lecturer, she gave lessons on Total Quality Management (ISO 9001:2000) and risk management. Arzu earned her master's degree in econometrics from Dokuz Eylul University and holds a bachelor's degree in statistics from Ege University.



**Els Van den Broeck**, Project manager R&D, Mobiel 21.  
(<http://www.mobiel21.be/en/>)

Mobiel 21 is a Flemish organisation working on sustainable mobility. We want to help build a living environment that is accessible and liveable in a nature-friendly, fair and safe way. Mobiel 21 inspires and activates people, groups, organisations and governments to thoughtfully consider their means of transport and mobility behaviour.

Els has a Masters degree in Environmental engineering sciences (1999, KULeuven) and Anthropology (2001, Montpellier). She joined Mobiel 21 in 2012 with more than 8 years of (inter)national policy experience as a climate change policy advisor for the Flemish Ministry of Environment. Since then she hasn't stop exploring good practices to develop local, national and European projects in the field of sustainable transport and mobility poverty. She has been involved in European projects like CIVITAS VANGUARD and MOBI and has also Interreg experience with the projects Eco2Mobility and NISTO. Since 2015 Els is project manager and always looking for great opportunities with interesting partners to make mobility more sustainable for everybody, preferably in a participatory approach.

One of the research topics Els is particularly interested in are opportunities of shared mobility with regard to the challenges of mobility poverty. During the training she will present results, examples and some food for further thoughts.

## Objectives

After this training participants:

- will have the basic understandings of inclusive mobility
- will have insights in relevant examples of challenges and solutions implemented in various cities in Europe and beyond
- will be able to set an initial outline for developing policies and measures to tackle the challenges of inclusive mobility in their own context.

## How to prepare?

- Follow one of the following CIVITAS e-courses: eg. 'Traffic and mobility – Fundamentals' available at [www.civitas.eu/learning-centre/e-courses](http://www.civitas.eu/learning-centre/e-courses)
- Think about examples of inclusive mobility in your own city. What inspires you?

## Agenda

| Time          | Theme   |
|---------------|---|
| 13:00h-13:30h | Registration + Welcome Coffee & Tea   |
| 13:30h        | Welcome and introduction to the training program  |
|               | <b>Expert presentations</b> <ul style="list-style-type: none"> <li>• Introduction to inclusive mobility</li> <li>• Importance</li> <li>• Strategies/measures/projects</li> <li>• Examples from cities in Europe and beyond</li> </ul> |
|               | <b>Training</b> <ul style="list-style-type: none"> <li>• Explanation of the case and training exercise</li> <li>• Designing a strategy for an inclusive urban mobility system</li> </ul>  |
|               | <b>Syntheses</b> <ul style="list-style-type: none"> <li>• Presentations of group work</li> <li>• Discussion</li> </ul>  |
| 17:00h-17:30h | <b>Close</b> <ul style="list-style-type: none"> <li>• Conclusions</li> <li>• Handover of certificates</li> </ul>  |