



CIVITAS PORTIS

EXPLORE OUR LATEST
PROGRESS AND NEWS!

Dear Reader!

On the one hand, the pandemic started transforming our urban life, and the current COVID 19 - reality has turned out to be a big challenge for the CIVITAS PORTIS project and the implementation of measures.

On the other hand, lockdowns have led many of us to look for new options: neighborhood walks or cycling along car-free streets and reminded us of the value of clean air, clear skies and quieter roads.

In these challenging times, there is a big cause of optimism in seeing, how the CIVITAS PORTIS cities remain committed to continue their efforts, despite COVID-19.

In this newsletter you will hear about the latest developments and progress in the five port cities Aberdeen, Antwerp, Constanta, Trieste and Klaipeda.

Travel advice for practical pumas, fit flamingos and clever peacocks? Read about the online test of Antwerp and discover what type of traveler you are. Or just have a look at the major milestones in Aberdeen. Find out, what is behind Constanta's "Choose a bike". And for those who have already chosen the bike, discover how Klaipeda takes care of bicyclists or check the successful bike-sharing system in Trieste.

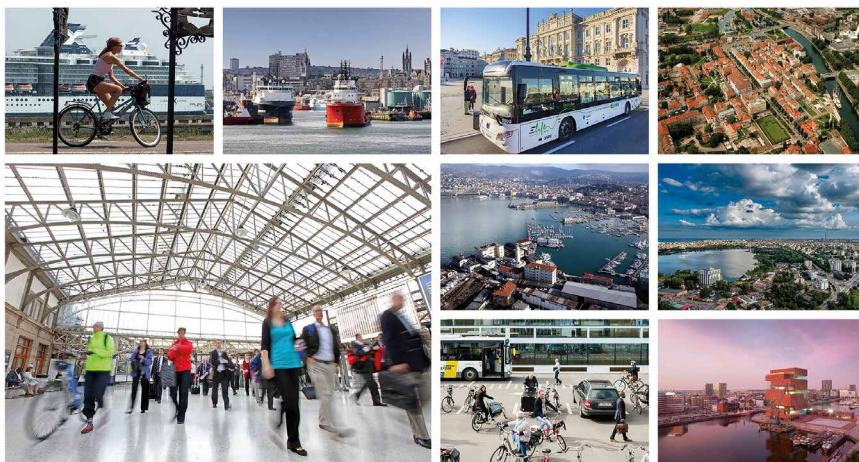
And if you wish to dive deeper into the CIVITAS PORTIS impacts and results, register for the Urban Mobility Days 2020 here: www.eumd.org. We wish you a pleasant journey through the CIVITAS PORTIS project!

Stay healthy,

Your PORTIS team

For further project information please visit:
www.civitas.eu/portis/

CIVITAS PORTIS TAKE UP ACTIVITIES



Now at the end of the Civitas Portis project, the activities to foster the transfer of knowledge on Portis results towards other EU cities (& beyond) are intensified. For these activities the gained knowledge will be the basis. The upcoming activities include the following:

Webinar series

The webinar series on behavioural change was launched in May, with experts from Antwerp and Aberdeen explaining their approaches. In July, the digital dimension of behavioural change was highlighted with Antwerp & Trieste demonstrating their Smart Route Planner. In September the last webinar was offered demonstrating the physical dimension, with examples from Klaipeda and Constanta. With these webinars we are aiming to inform and interact with technicians and policy makers on the lessons learned in the PORTIS cities, inspiring them to do similar interventions.

City-2-City Cooperation programme

After having selected 5 follower cities which are matched to one of the project cities, actual exchange visits were prepared with teleconferences. Unfortunately, all the visits had to be cancelled due to COVID-19. In close contact with PORTIS and follower cities an appropriate solution is currently sorted out to secure dates for a virtual exchange.

Workshop with the ports

After having participated in the AIVP World Conference in Riga last year, we are liaising with AIVP (network of cities & ports) to discuss in which way we can extend our cooperation this year. This would allow us to share relevant PORTIS strategies, such as integrated port-city governance and integrated port-city Masterplan with ports worldwide.

Workshop with non-EU cities

After our successful exchange with China now also a liaison with a selection of non-EU cities is planned in order to organise a workshop tailored to their challenges. Most probably this workshop will be included into the final PORTIS conference, parallel to the session for EU-cities on take-up.

Coming soon: Transferability Sheets

In order to share all these insights across interested take-up cities and to anchor the knowledge beyond the project lifetime, we are currently documenting the Portis strategies and measures with the biggest potential for take-up in form of transferability sheets.

ABERDEEN

BUSY WITH PORTIS MEASURES

As the project end approaches Aberdeen has been hard at work and achieved many major milestones. In late 2019 the 'Sustainable Urban Mobility Plan' (SUMP) was approved by Committee which a huge achievement for the city-this sees an ambitious set of measures aimed to reduce congestion, encourage active travel and improve air quality.



fleet of our private partners who will pilot these as part of their operations.

Overall many new innovative measures have been implemented in the city region as part of PORTIS which the city would not have necessary undertaken without the project funding. Even once the project ends the PORTIS legacy will continue.

For more information please contact:
[Amye Robinson at Aberdeen City Council](#)

The quick wins of the SUMP are already being implemented and it complements many other transformational work in the city such as the Roads Hierarchy and Strategic Car Parking Review which were also undertaken as part of PORTIS.

Alongside the Council, with the consultants, are in the process of developing a smart journey planning tool. This has been an intensive piece of work which aims to provide better journey time information to the public and nudge behavioural changes to more active and sustainable travel choices. The smart journey planning tool has been designed through co-design sessions with different groups of volunteers. This approach was taken to try and ensure the tool is fit-for-purpose and will have a positive impact. Unfortunately with the Covid-19 pandemic the public launch of the smart journey planning tool has been postponed until more normality returns.

Another part of the project completed is the implementation of additional bike parking and bike maintenance hubs. This is hoped to encourage more active travel journeys along the A96 Corridor into the city centre. Further bike parking is planned for other locations in the city.

A further exciting piece of work being undertaken is the introduction of hydrogen-diesel and electric vehicles onto the



FACTS

Population:

230,400 (2015)

Land area in km²: 185.7 km²

Population density:

1,240 people per km² (4th highest in Scotland)

ANTWERP-

THE SMART WAYS TO ANTWERP 'WHAT TYPE OF TRAVELER ARE YOU' TEST

Going smart to Antwerp, everyone does it in its own way. Depending on their agenda, trajectory and preferences. And for those who are wondering what the best way for them is, Smart Ways to Antwerp has built an online test 'What type of traveler are you?', now also available in English.



The goal of this test is to give travellers personalised travel advice. On the result page they receive some tips, and direct links to interesting solutions for them. For example to a bike sharing system, a carpool platform, to our route planner,...

The benefit for the users is, that they can give consent to save their profile in our database and/or subscribe to our newsletter. In the future we would like to use this for targeted information and incentives, for examples free minutes for shared scooters, a discount on mobility services (we are setting up partnerships with mobility service providers for this). Go to www.sna.be/test-EN and answer the questions. You will discover what type of traveler you are and receive interesting tips. Curious about what the results may be? Take a look below.

The **Rampant Mustang** likes comfort and being on the road. But maybe recent events made you like the comfort of your home office too? Find out whether you can work from home on a regular basis in the future as well. If you have flexible working hours, you can also avoid the busy traffic hours by leaving earlier/later.

The **Practical Puma** likes to be prepared. Take a look on our website for the latest mobility information. Maybe you

What type of traveler are you?

Find out on
www.sna.be/test-EN



do not feel entirely at ease on crowded trams and trains right now? Try for example to check your e-mails first at home and take a less full tram later.

The **Fit Flamingo** likes to be active and on the move. Also now you prefer to take the bike or go by foot. Excellent way to stay fit and healthy, spread the word! If you are looking for something new, try another route. Maybe you will discover some hidden gems in your city.

The **Clever Peacock** knows its way on public transport. But it's great weather, have you taken the bike recently? Keep on cycling in the future as well. It is a good way to stay fit. You can also combine it with train, tram and bus for more flexibility.

The **Ground-breaking Gazelle** enjoyed discovering new applications for online meetings in its home office. Keeping up with the latest tools, that's you. Have you tried Mobility-as-a-Service already? It helps you find your ideal transport mode right on your smartphone.

The **Determined Dolphin** adapts quickly to all situations. Working from home? No problem! Need to go a day to the office? Alright! Check the Smart Ways to Antwerp route planner to get the best travel advice and get inspired.

For more information please contact:
[Marijke De Roeck at City of Antwerp](#)

FACTS

Population:

- City: 520,000
- Province: 1.8 million

Land area in km²: 204.5 km²

Population density: 2,500 people per km²

CONSTANTA- 4TH YEAR OF PORTIS ACHIEVEMENTS

Constanta continues to intensify the work keeping the Mobility Forum alive as a useful and important tool to address and debate the mobility issues in Constanta Metropolitan Area.

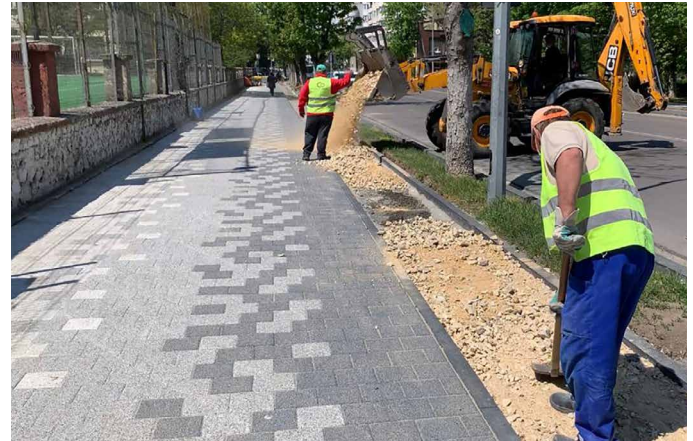
Most of the projects that have been identified and prioritised after the correlation between Urban Mobility Plan of Constanta and the Masterplan for the Development of the Port are being implemented at the moment. These represent the fruit of the cooperation activity between the various institutions and the various actors involved.



Unprecedented for Constanta, alternative mobility and 'clean' mobility are being intensely promoted, both at infrastructure projects level and by awareness campaign carried out. Thus, the main boulevards of Constanta are currently in the process of rehabilitation, and paths dedicated to public transport and bike lanes will be built, as well as other facilities for alternative mobility.

The new COVID reality represents a major challenge for Constanta mobility and PORTIS activities implementation. Public transport, intensely promoted as the main form of mobility in the city, suddenly became disagreeable under the new conditions, the population being tempted to use the personal car for all types of trips. Therefore, within PORTIS, a large and intense campaign was launched - "Choose virtual mobility" - trying to familiarize the population and economic operators with the use of information technology during this period and avoid physical movement when not necessary.

In the spirit of this approach, the PORTIS team and the Constanta Metropolitan Area carried out various volunteer actions



during April 2020, offering support to the elderly, but also to other vulnerable categories, e.g. offering food packages and articles for personal use.

With the relaxation of the restrictions imposed by the state of emergency, the campaign "Choose the bike!" dedicated to promoting bicycle mobility was launched.

Also, during this difficult period, all the activities of the project were carried out eminently online, focusing on ensuring continuity, especially in the case of the Mobility Forum and other activities that require a dialogue between stakeholders.

For more information please contact:
[Adrian Craciun at Constanta Metropolitan Area Association](#)



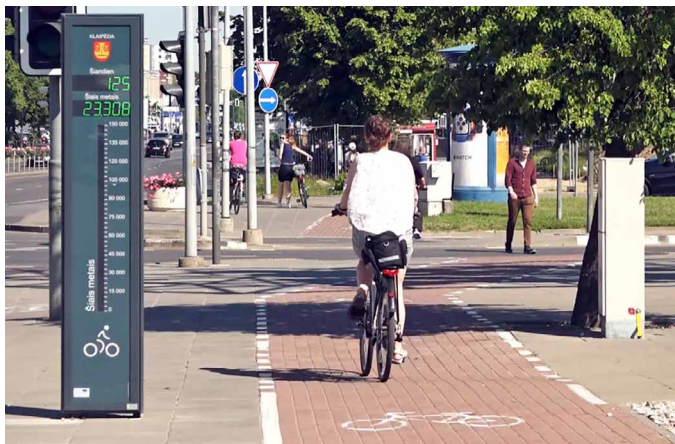
FACTS

Population:
- City: 317,832
- Agglomeration: 491,498
Land area in km²: 124.89 km²
Population density: 2,273 people per km²

KLAIPEDA-

NEW MEASURES ON THE ROAD TO SUSTAINABLE MOBILITY

In summer more and more people are switching from cars to environmentally friendly vehicles - bicycles. In order to ensure safe traffic for the cyclists and pedestrians the infrastructure of bicycle tracks in Klaipėda is constantly renewed and improved.



A new bicycle track have been installed along the streets that are currently being reconstructed.

Investment in this infrastructure aims to make it safe and invites more people to use bicycles not only as something you do for leisure but also as a means for commuting on daily basis as it is the most environmentally friendly option.

Klaipėda also takes care for security of the bicycles themselves - bicycle storages with a capacity of up to 25 bicycles have been installed near three schools of this port city.



One bicycle storage with room to store up to 10 bicycles is also on one of the main streets of Klaipėda.

In order to monitor and analyze the flow of green mobility passengers, two smart bicycle counters have been installed. These counters collect data that are based on the usual traffic conditions and can separate cyclists from other traffic users such as cars and pedestrians. The collected data is then published on the smart counters and online in real-time, serving as a data source for the analysts who are planning Klaipėda's green transport development. Since the installation of these smart bicycle counters totally 51,092 cyclists have already been recorded! Hopefully this number will increase more with future development of Klaipėda's green transport improvement strategy and other projects.

For more information please contact:

[Roberta Burgan at Klaipėda City Municipality Administration](#)

FACTS

Population:

- city: 154,326

- agglomeration: 329,146

Land area in km²: 98 km²

Population density: 1574,8 people per km²

TRIESTE- CITIZENS & STAKEHOLDERS IN THE SPOTLIGHT

Trieste has completed several steps through the mobility measures of PORTIS in the last months. On July 24th, 2020, the SUMP was adopted within the Municipality board, and went public to citizens and stakeholders on August 5th, in order to start a two-months period when citizens and stakeholders can comment and submit further proposals.



The SUMP provides actions to improve sustainable mobility all over the metropolitan area of Trieste, from automatic climbing systems and elevators to improve accessibility, to intermodal nodes located in the outer ring of the city.

The SUMP takes up the findings of the transportation analysis of a second PORTIS measure: the “Feasibility study of a hybrid and innovative PT systems”; the study has been completed as a standalone preliminary project, and it is serving the demand and offer forecasted in the SUMP. The innovative transport concerns a cable car system which



should connect the city centre with the Old Port Area and climb up the hill towards the upper part of Trieste. The innovative system acts as a part of the sustainable mobility offer and as a touristic attraction: on the one hand, the cable car is an additional system that connects with cars, buses and pedestrians paths (reducing the impact of private motorised transport modes in the city); on the other hand, the view over the sea, the hills and the city that it can provide is unique in Europe.

Finally, some news about the Bike Sharing system; the services started in February 2020 and in few weeks the number of subscriptions reached 5000 just before the stop of the service due to the COVID-19 lockdown. The system then started again in May when we got more than 2000 new subscription, getting the total to nearly 7000. By the mid of August 2020 two more new Bike Sharing stations are implemented in the Old Port Area, improving the network from 10 to 12 stations in the city. Operation should start soon.

For more information please contact:
[Giulio Bernetti at Municipality of Trieste](#)



FACTS

Population:
203,825

Land area in km²: 84.49 km²

Population density:
2,412 people per km²

CIVITAS PORTIS INNOVATION ACTIVITIES

The innovation workstream within PORTIS has the overarching aim to generate new ideas to enhance the effectiveness of measures. Partners have also worked together on City Exploitation Plans to investigate how the mobility measures can be sustained and expanded beyond the project lifetime.



Assessing innovation performance

Within the first year of the project, we worked with city partners to generate ideas for so-called 'Innovation Activities' for selected measures. These activities were foreseen as small complementary actions relating to Organisational, Planning & Implementation and Business Model & Marketing aspects that could enhance the way a measure is delivered, as well all as Product & Service innovations – i.e. enhanced measures improving sustainable mobility outcomes. The process of Innovation Monitoring is now being undertaken, to see which of these additional actions have been undertaken and the beneficial effects resulting from these.



For example, the City of Antwerp set out to implement a coherent cycle signage strategy and undertook additional, very productive stakeholder consultation as a result of the Innovation Process. Service innovations include the addition of QR-codes to bicycle signage to enable access to updated information online.

Expanding sustainable mobility measures within the city

We have been working with cities on Exploitation Plans to clarify the status of measures at the end of the project and the prospects for continuation and scaling up of measures when PORTIS draws to a close. Successful cases include the bike-sharing scheme introduced in central Trieste, where there are now plans to expand this to provide sharing hubs within the Old Port regeneration area. To provide a further example, the City of Constanta developed parking regulations over a period of two years and is now planning to extend application of its Parking Strategy Action Plan over a wider area.

EVENTS IN THE CITIES OF CIVITAS PORTIS

In 2020 some public events and meetings took place and are planned:

ABERDEEN

Due to Covid-19 many of our planned events have **had to be cancelled** for public safety however Aberdeen continues to host, or attend, as much virtual engagement sessions as possible and will play 'virtual' host to the PORTIS Final Steering Group and General Assembly in September 2020.

ANTWERP

Due to Covid-19 there are no events planned yet! Any future events can be found in the online event calendar.

CONSTANTA

Until the end of the project, but also after, the campaigns to promote sustainable

urban mobility will be continued, focusing also on the results and achievements obtained within PORTIS.

KLAIPEDA

A network event with stakeholders was planned for July/August, but due to COVID-19 this event is moved for August/September. Further information will be available soon in the online event calendar.

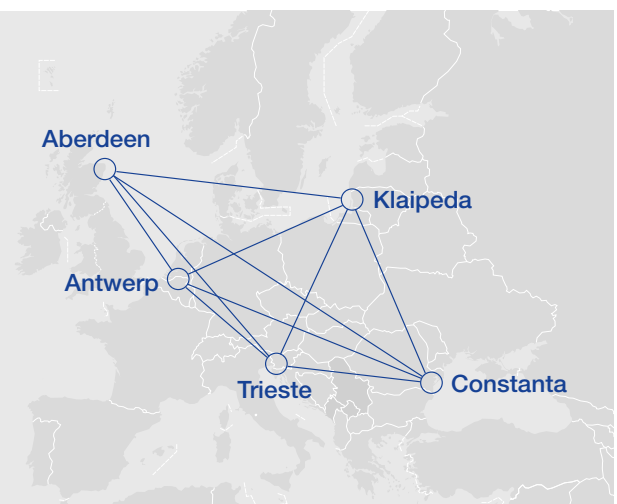
TRIESTE

Trieste will continue its information campaign for citizens regarding its SUMP and will start a social advertising campaign on e-mobility and soft-mobility. Trieste will also organise some technical workshops and meetings about soft-mobility issue during the EMW2020.

For detailed information, exact dates and programmes please check the [CIVITAS event calendar](#).

CIVITAS PORTIS IMPACT

CIVITAS PORTIS wants to achieve a decrease in commuters' traveling times between port and city (from -10% in Constanta and Klaipeda to -40% in Antwerp), a decrease in the number of commuter trips by car (from -4% in Constanta and Klaipeda to -15% in Aberdeen) and an increase in the use of public transport (e.g. +15% in Trieste).



IMPRINT

All content and pictures were provided by the CIVITAS PORTIS project partners.

The content of this newsletter does not reflect the official opinion of the European Union. Responsibility for the information and views expressed therein lies entirely with the authors.

Design & Layout: [FGM/COMMUNICAT](#)



This project has received funding from the European Union's Horizon 2020 research and innovation programme under grant agreement No 690713.