



CIVITAS PORTIS

EXPLORE OUR LATEST
PROGRESS AND NEWS!

Dear Reader!

CIVITAS PORTIS is getting ready to go out and share its results and knowledge. Over the last year, we have delivered our [innovation briefs](#) to inspire other cities and ports. This autumn, we will intensify the work on our legacy by providing a set of transfer sessions like at this year's [CIVITAS Forum](#) or by our [peer-to-peer learning programme](#), offering the insights and experiences of our five living labs.

“Living labs” is taken literally by CIVITAS PORTIS: The five partner cities are continuing their efforts to provide you with well-tested and proven innovative measures. Aberdeen is preparing measures for the bus stop of the future, Antwerp is successfully showcasing its integrated real-time travel planner “Smart Way to Antwerp”, Constanta is testing out how to gain benefits from e-scooter sharing systems, Klaipeda is working towards intelligent traffic management for the most traffic-loaded corridors and Trieste is basing its SUMP development on a broad-scale and participatory state-of-play analysis.

In coming months, CIVITAS PORTIS will develop its transferability sheets as a recipe for cities on a variety of project measures. They'll provide the background story, key elements for planning and implementation and what to consider in transferring them to one's own local background.

Stay tuned and visit us at the CIVITAS Forum in Graz!

We hope you will enjoy the CIVITAS PORTIS newsletter.

For further project information please visit: www.civitas.eu/portis/

IT'S TIME FOR EXTENDED COOPERATION & KNOWLEDGE TRANSFER!



As we head into the last year of CIVITAS Portis, we are accelerating cooperation and knowledge transfer, and working on our legacy. Our efforts have resulted in recognition by awards, work agreements towards renewed governance approaches and project transfer offers by the City-2-City cooperation and at the Civitas Forum 2019.

This May, CIVITAS PORTIS was recognised at the IAPH World Ports Sustainability Awards 2019 in Guangzhou, China. The prize was awarded in the category of “Community outreach, addressing externalities”, after a public vote and jury rating. We are proud of this internationally recognised award and give a special thanks to our project partner Port of Antwerp.

Just a month later, CIVITAS PORTIS shared its knowledge with other port cities at the AIVP conference in Riga, Latvia. AIVP – the worldwide network for port cities – is dedicated to the sustainable, responsible and innovative development of port cities. PORTIS specifically contributes to the theme of renewed governance between cities and their ports and is destined to continue the exchange with the AIVP network.

Right now, CIVITAS PORTIS is calling out to interested port cities for a City-2-City cooperation programme. The five partner cities offer port cities close cooperation with their experts to transfer their most useful innovations and experiences. The [call](#) is open until the 15th of September!

With the upcoming CIVITAS Forum on 2-4 October 2019 in Graz, Austria, CIVITAS PORTIS will host two dedicated transfer sessions on “Freight and Logistics” and “Using Census Data to Better Plan our Active Travel Network”. Don't miss the chance to meet our experts in Graz!



THE CIVITAS INITIATIVE
IS CO-FINANCED BY THE
EUROPEAN UNION

ABERDEEN

BUSY WITH PORTIS MEASURES

It's always busy in Aberdeen as we continue to implement our PORTIS measures! Our key progress to date includes the development of our Sustainable Urban Mobility Plan (SUMP) and its draft was approved by the Committee in June 2019. The Committee also approved the outcomes of a roads hierarchy study as well as the Strategic Car Parking Review for Aberdeen City.



Engagement work has been undertaken and a bike hire option appraisal, which looks at potential options for a bike hire scheme in Aberdeen, has been developed. The recommendations following the public engagement and study are planned to go to committee in September 2019.

We are currently undertaking engagement events with employees in the North and South Dee areas of the city to find out more about their opinions, journey to work and what potential improvements could be made to encourage greater active and sustainable travel. The outcomes of the engagement sessions will be used to form a long-term action plan going forward to continue the PORTIS legacy.

Alongside this, measures are beginning to be implemented for the A96, an important strategic corridor, which include EV charging as well as equipping selected bus stops with EV vehicles, cycle parking and E-Readers. Approval has also been granted for a joint control room, which will house both Aberdeen City Council as well as Police Scotland. This is a very exciting development that will see greater collaboration between key organisations and bring about a safer and more efficient transport network.

Following the opening of the Aberdeen Western Peripheral Route, a number of automatic number plate recognition (ANPR) devices have been implemented at selected lo-



cations in and around the city centre. This data, which is anonymised, will be used to update the strategic transport model on a more real-time basis. The data from the ANPR will be put into the model, tested and validated in late 2019. An order has also been placed for a hydrogen fuel cell and this will be used to convert a transit van to hybrid hydrogen-diesel, piloted by Siemens as part of the PORTIS project. This is to demonstrate hydrogen technology and transport within the private sector and encourage greater uptake.

For more information please contact:
[Amye Robinson at Aberdeen City Council](#)



FACTS

Population:

230,400 (2015)

Land area in km²: 185.7 km²

Population density:

1,240 people per km² (4th highest in Scotland)

ANTWERP- RECOGNITION AND EFFECTS

Antwerp's continuous efforts for sustainable mobility are bearing fruit! Antwerp and, respectively, CIVITAS PORTIS, was recognised two times:

First, Antwerp as a city won the AGORIA Smart City Award for its "Smart Ways to Antwerp" approach and multimodal travel planner. It is a platform and app, and one of the many CIVITAS PORTIS measures in the city. "Smart Ways to Antwerp" – or as it is called in Dutch, "[Slim naar Antwerpen](#)" – provides real-time information on the best way to come



into the city. The travel planner makes use of a multimodal approach. Among other things, users can consult a map highlighting the current traffic situation, car and bike sharing places, taxis, parking spaces, trains, trams and bus stations. In brief: it covers all transport options in Antwerp. The Smart Ways to Antwerp platform is an integrated approach to foster sustainable mobility and respective modal choices. It provides information on alternatives to car use and adds inspirational content and cooperation measures with companies and transport providers. The technology experts of AGORIA labelled Smart Ways to Antwerp the most advanced mobility tool in Belgium.

Second, CIVITAS PORTIS won the IAPH World Ports Sustainability Awards 2019. A special thanks for this joint achievement goes to our project partner, the Port of Antwerp. The prize was won in the category of "Community outreach, addressing externalities". The winners were determined by a public vote and jury ratings, and were announced during the IAPH Conference in Guangzhou, China, on the 6th - 10th of May 2019.



Moreover, the latest modal split development in Antwerp showcases the effects of ongoing engagement for sustainable urban mobility. In April 2019, Antwerp held a press conference announcing the modal split figures for 2018. Commuting by car decreased by 10% compared to 2010. Cycling trips increased by 12% over the same period. Public transport saw a slight decrease while walking figures noted a slight growth. The data for leisure time trips indicates the same trend as with commuters. The modal split survey investigated other mobility options aside from the classical transport modes. Shared mobility experienced strong growth in terms of availability and actual usage figures. A special detail of the analysis on the "Smart Ways to Antwerp" companies gave promising results as well: Cycling, carpooling, public transport use and walking increased in the participating companies, while car usage decreased by 20%. Altogether, the modal split survey results show the positive development of urban mobility, thanks to the many initiatives taking place and many partners working actively on sustainable mobility solutions.

For more information please contact:
[Marijke De Roeck at City of Antwerp](#)

FACTS

Population:

- City: 520,000

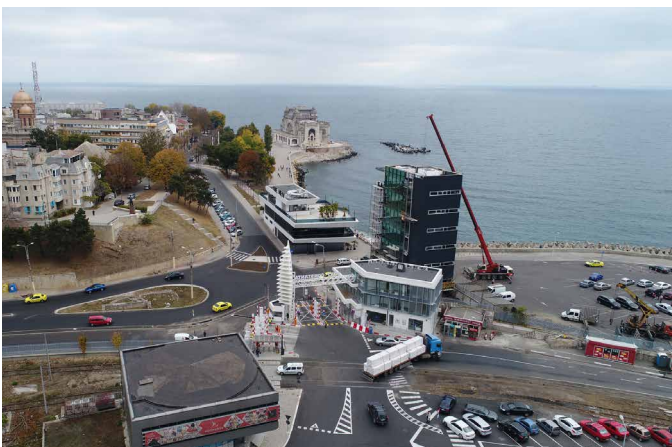
- Province: 1.8 million

Land area in km²: 204.5 km²

Population density: 2,500 people per km²

CONSTANTA- NEW EFFORTS TO GET PEOPLE OUT OF THEIR CARS

Constanta has intensified its work on addressing challenges and connected solutions shared by the city and its port. The framework of the Sustainable Urban Mobility Forum proved to be the right governance structure for this and has remained the focal point of CIVITAS PORTIS actions.



The most recent actions proposed to Constanta's decision makers by the Mobility Forum have focused on electric scooters, public transport campaigns and motivation for a modal shift from car use to walking. As in many other European cities, electric scooters are a new possibility for Constanta. The city aims to employ electric scooters as a viable and ecological alternative to car trips, especially in the city centre. To further help reduce car trips, the city and Constanta's local public transport provider launched the "Alege autobuzul! – Choose the bus!" campaign, right at the time of a major public transport fleet renewal.



The Constanta Metropolitan Area Association launched an innovative contest called "Mergi pe jos! E simplu si sanatos! – Walk! It's simple and healthy!" It asks drivers to try walking instead. The contest stresses walking as a natural way of moving and emphasises its health benefits. It addresses tourists and citizens of Constanta alike.

In the meantime, Constanta has continued with the implementation of its long-time measures in the area of a new parking strategy for the Constanta peninsula, the extension of bus line services in the port area, and the re-use of road space for active mobility modes on its main boulevards, including pedestrianisation projects.

For more information please contact:
[Adrian Craciun at Constanta Metropolitan Area Association](#)



FACTS

Population:
- City: 317,832
- Agglomeration: 491,498
Land area in km²: 124.89 km²
Population density: 2,273 people per km²

KLAIPEDA-

NEW MEASURES ON THE ROAD TO SUSTAINABLE MOBILITY

Klaipėda is about to invest in a new traffic management system aimed at easing heavy traffic on the main corridors and giving priority to public transport at intersections.



Twenty-one traffic-light-regulated intersections have been earmarked for modernisation, including improvements to pedestrian crossings. The new traffic lights will be part of the upcoming traffic management system and will allow for the installation of a “green wave”, fostering smooth traffic flows to reduce GHG and noise emissions from heavy vehicles. The connected corridor of intelligent traffic lights will increase road safety conditions and at the same time foster the attractiveness of public transport in the area, thanks to a priority label for public transport vehicles.

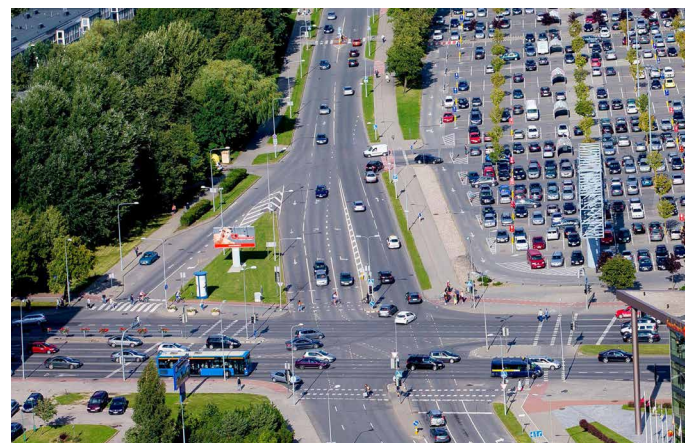
Klaipėda is making improvements for local cyclists, too. The city plans to cater to its current and future cyclists with ten new bicycle parking facilities. The main idea is to improve cycling conditions for commuters and school trips by offering safe, secure and weather-protected parking options. Consequently, the first four parking facilities will be installed close to school centres. The other facilities are planned for locations close to large residential areas as well as public buildings with high traffic. The coming provision of better bicycle parking facilities is based on an early 2019 analysis investigating the most frequented locations and most suitable parking facility options for Klaipėda’s purposes.

Alongside the bicycle parking facilities, Klaipėda wants to



invest in cycling’s visibility by installing two bicycle counters. Counts will be based on the usual traffic conditions, employing intelligent counters that separate cyclists from other traffic users. The collected data will be published online in real-time and will serve as a source for the analysis, planning and reporting on Klaipėda’s bicycle development.

For more information please contact:
[Milda Milbutaitė at Klaipėda City Municipality Administration](#)



FACTS

Population:

- city: 154,326

- agglomeration: 329,146

Land area in km²: 98 km²

Population density: 1574,8 people per km²

TRIESTE- TRAFFIC PLAN 4.0: CITIZENS IN THE SPOTLIGHT

Trieste is entering the main phase of its SUMP development. After collecting and preparing preliminary data, Trieste is now performing the full data collection.



A task force of twelve people oversees the collection of four months of data covering 4% of Trieste's population. Interviews and traffic counts started at the end of February with:

- Passengers' origin and destination data collected in busses;
- Traffic counts done at selected links;
- Car drivers' origin and destination data collected once vehicles enter the metropolitan area of Trieste;
- Citizens' trips and their modal choices assessed at residential buildings all over Trieste.

Citizens have been asked for their suggestions to Trieste's SUMP. The plan's focus is on:

- Giving priority to vulnerable transport user groups, such as pedestrians, cyclists, the elderly and children;



- Improving the most dangerous road crossings;
- Regulating heavy traffic conditions;
- Providing services for tourists;
- Employing smart technologies in the future transport network.

Data collection is of fundamental importance in order to get the full picture on the current mobility processes in the city. Right at the start of the main development phase, Trieste organised a public event on the 15th of March, presenting the SUMP process to citizens and stakeholders.

By summer 2019, the SUMP task force will start transport modelling for roads and public transport networks fed by the results of the data collection. The results of the data collection, needs assessment and transport modelling will then form the basis of the main steps, defining objectives, priorities, and packages of measures.

With this SUMP, Trieste is trying to provide better conditions for active mobility and vulnerable user groups. The city also needs to protect its architectural heritage against the harmful effects of transport.

For more information please contact:
[Giulio Bernetti at Municipality of Trieste](#)

FACTS

Population:
203,825

Land area in km²: 84.49 km²

Population density:
2,412 people per km²

CIVITAS PORTIS INNOVATION ACTIVITIES

A unique aspect of the PORTIS project has been to embed an innovation process in the design of selected mobility measures. The end objective is to maximize the beneficial effects of the measures by adding a range of additional innovation activities.

The City of Antwerp measure “High quality signage for cyclists” provides a good example of how the innovation process has influenced the design process, helping create an inclusive and user-centric approach. Cycling signage across Antwerp has been installed at different times and by different organisations, and therefore the core aim for the city authority has been to introduce a unified and easy-to-understand form of cycling signage. An initial innovation brainstorming with the measure team introduced a couple of additional ideas, such as the deployment of dynamic signage and making signage from sustainable, recycled materials.

Nevertheless, the best ideas emerged when user groups were engaged at a “More than bike signage” workshop, an activity promoted by the innovation process.

Productive discussions with user groups determined that finding bicycle parking spaces has become a problem. The City of Antwerp now plans to implement a digital platform that shows the occupancy rate of parking spaces in bike parking and storage facilities. The newly constructed Opera Square has been identified as a priority location for testing this technology, as the



parking facility is located underground, so digital signage at the entrance will be very beneficial. The occupancy of the bicycle parking facilities will be monitored automatically with the use of sensors.

The new bicycle signage scheme has already been designed. It will start being placed on the streets in Q3-2019 and will be finished by Q4-2019. The signage will be based on the supra-local bicycle routes (provincial bicycle routes), as determined in the mobility plan of the city of Antwerp. These routes coincide with the recommended bicycle routes drawn up by the city of Antwerp.

PORTIS SUPPORTS THE AIVP CONFERENCE IN RIGA

On the 6th and 7th of June, AIVP - The Worldwide Network of Port Cities - signed the ten commitments of its 2030 Agenda for more sustainable, responsible and innovative development of port cities.

The AIVP Agenda 2030 translates the global governance sustainable development goals into the context of port cities, helping port and urban stakeholders to prepare projects and plans that contribute to sustainable development and port-city relationships.

One of the 10 goals of the 2030 Agenda as ratified in Riga is to promote city-port dialogue through a renewed governance approach. Its aim is to reconcile the quest for economic and environmental performance with people's well-being and aspirations. A more integrated city-port governance connects to CIVITAS PORTIS, as this is one of the project's main strategies. A CIVITAS PORTIS delegation was present at the AIVP conference, sharing their insights from an urban perspective and exploring



possibilities for further cooperation. In the conference session ‘Improving mobility in the port city and combating urban congestion’, behavioural expert Steven Windey represented the city and port of Antwerp. Steven gave a compelling presentation on Smart ways to Antwerp, Antwerp's integrated approach to changing travel behaviour.

EVENTS IN THE CITIES OF CIVITAS PORTIS

In 2019 a large number of public events and meetings took place and are planned:

ABERDEEN

An Evening Talk Series on 'Transport & People' was undertaken in spring 2019 along with the Tour Series in May 2019 and 'Evolution' in June 2019 to stimulate the uptake of ULEV's in Scotland. The annual "In Town Without My Car Day" will take place in September 2019.

ANTWERP

The CIVITAS Initiative and CIVITAS PORTIS joined forces to organise a study visit in Antwerp on the 8th - 10th of May, focusing on behavioural change, cycling, mobility management, governance approaches and innovation. Antwerp also welcomed the CIVITAS Political Advisory Committee on the 8th of May.

After the summer, Antwerp will organise a **car-free Sunday**, the **European Mobility Week from the 15th - 22nd of September**, and the high-level **CEO Smart Ways to Antwerp** event for companies on the 20th of November.

CONSTANTA

This September, Constanta Municipality and the port are organising several mobility actions as part of the **European Mobility Week (EMW) 2019**. Starting with the EMW as a beacon activity, the local CIVITAS PORTIS team will continue to organise awareness-raising campaigns with a thematic focus, addressing and cooperating with diverse stakeholders.

KLAIPEDA

Klaipėda hosts this year's **CIVITAS PORTIS day and meeting on the 4th - 6th of September** and is looking forward to

welcoming all project stakeholders, to showcase the city's progress and the work for the coming year.

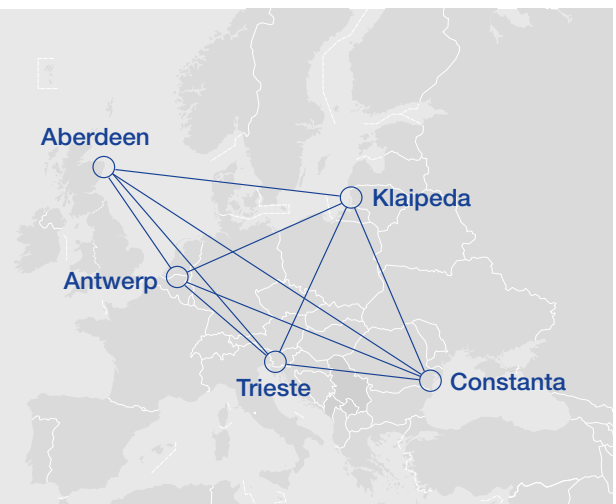
TRIESTE

Trieste will continue its information campaign for citizens regarding its SUMP over the next few months. Specifically, a number of meetings and events are planned to involve stakeholders and citizens in the process of integrating the old port of Trieste into the urban context.

For detailed information, exact dates and programmes please check the [CIVITAS event calendar](#).

CIVITAS PORTIS IMPACT

CIVITAS PORTIS wants to achieve a decrease in commuters' traveling times between port and city (from -10% in Constanta and Klaipeda to -40% in Antwerp), a decrease in the number of commuter trips by car (from -4% in Constanta and Klaipeda to -15% in Aberdeen) and an increase in the use of public transport (e.g. +15% in Trieste).



IMPRINT

All content and pictures were provided by the CIVITAS PORTIS project partners.

The content of this newsletter does not reflect the official opinion of the European Union. Responsibility for the information and views expressed therein lies entirely with the authors.

Design & Layout: [FGM/COMMUNICAT](#)



This project has received funding from the European Union's Horizon 2020 research and innovation programme under grant agreement No 690713.