



CIVITAS PORTIS

EXPLORE OUR LATEST PROGRESS AND NEWS!

Dear Reader!

In CIVITAS PORTIS, we are busy planning and implementing over 40 sustainable mobility measures. After the first year of implementation we proudly present the progress of our Living labs.

Join our journey through the highlights of CIVITAS PORTIS: Learn about [Antwerp](#)'s ferry service, travel plans and the truck guiding system, the latest news on the electric fleet and the parking management system in [Trieste](#) and [Aberdeen](#)'s Highlights from 2017. Explore the innovative solutions for sustainable urban mobility in [Constanta](#) and find out about [Klaipeda](#)'s idea of a cleaner and better city.

All CIVITAS PORTIS activities are accompanied and supported by experienced actors in the field of sustainable mobility:

- Vectos plays the leading role in creating the local innovation, ensure its sustainability and maximise the European added value through active cross-site collaborative working.
- Monitoring and evaluation of transport interventions is one of the key areas of expertise of the Centre for Transport Research of the University of Aberdeen.
- Transport & Mobility Leuven NV is the bridge between university and society and guarantees a strong analysis of transferability potentials.
- With more than 20 years of experience in tailor-made project communication Austrian Mobility Research is the right partner to spread our news.
- And last but not least: ISINNOVA is responsible for the day-to day management and coordination of the 34 partners in CIVITAS PORTIS and ensures a fruitful cooperation.

We hope you will enjoy this second edition of our CIVITAS PORTIS e-update and please do contact us if you are interested to know more!

THE CIVITAS PORTIS INNOVATION



One tasty morsel is the 1st edition of the CIVITAS PORTIS INNOVATION brochure. CIVITAS PORTIS partners accepted the challenge of applying an Innovation Process to selected PORTIS measures. The objective? – to generate new ideas and innovation that will further increase the beneficial impacts of the measures.

Explore and find out:

- what we mean by innovation in the context of CIVITAS PORTIS
- an introduction to the CIVITAS PORTIS approach for fostering innovation
- examples of how cities are working with universities to boost capacity and creativity
- and key observations from Constanta's "city exchange" visit to Antwerp

The Innovation work stream is a unique aspect of CIVITAS PORTIS and we are pleased to offer our e-brochure for download [here](#).



ABERDEEN'S 2017 ACHIEVEMENTS

One of Aberdeen's highlights from the first year of the project includes a major study on current car parking within Aberdeen city centre which informs the Strategic Car Parking Review, and the management options will now go to Council Committee for approval in early 2018.



Aberdeen has also been busy undertaking a range of different stakeholder engagement meetings to look at what gaps exist within the different CCTV systems and Aberdeen City Council Officers visited Bristol Operations Centre to learn from their experience. Through these meetings a gap analysis and Joint CCTV Control Room Strategy and template will be produced for Aberdeen.

Aberdeen has also been holding discussions with Transport Scotland, the Department and the Institution for Engineering and Technology to look at how to collaborate for the development of a smart journey app for Aberdeen and how this could be replicated across other UK and EU cities.

Aberdeen participated in Klaipeda's workshop on SUMP, presenting its experience with SUMPs and the plans for its update within PORTIS, which take into account national projects such as the new harbour expansion. Aberdeen also very recently visited The Hague and Antwerp to learn more about how digitalisation can be used to enforce parking, and to explore opportunities for joint learning and collaboration on smart data and the smart journey app.



In addition, Aberdeen has been exploring additional innovation opportunities, such as connected vehicles, living blog experiences, collation of data for use in strategic transport modelling and smart procurement, just to name a few. Overall, it's been a busy year with Year 2 set to be even busier!

For more information please contact:
[Amye Robinson at Aberdeen City Council](#)



FACTS

Population:
230,400 (2015)

Land area in km²: 185.7 km²

Population density:
1,240 people per km² (4th highest in Scotland)

ANTWERP'S

FERRY SERVICE, TRAVEL PLANS AND THE TRUCK GUIDING SYSTEM

The Flemish government, city and civic movements have signed the 'Treaty for the future' on how to keep the Antwerp region accessible and liveable, and the ambition of a 50/50 modal split has been established. A new cooperation model involving all stakeholders (the City of Antwerp, Antwerp Port Authority, municipalities, civic movements, etc.) is being set up to improve institutional dialogue. Also, events (such as the Inspiration Day on Sustainable Mobility), visits and exchanges with other cities are taking place.



Several measures have been undertaken to further encourage cycling. The city bike-sharing system 'Velo' has been expanded. The Antwerp Port Authority organised a second evaluation period for its ferry service on the Canal Dock, from June until October 2017. During this period, the ferry service transported 15,000 passengers. Thanks to these positive results, this initiative has been extended until the end of January 2018.

The local partner, De Lijn, is further expanding its collective transport network and implementing Antwerp as a tram city. A bus hub was installed to function as a bus buffer for the regional buses, where passengers can transfer to city lines. Tramlines are being expanded to provide better connections between the city centre and other parts of the city. A City Pass was introduced which combines bus, tram and train in the Antwerp region. Raising awareness campaigns are being held by De Lijn, NMBS and Smart Ways to Antwerp, together with extensive information about the infrastructural works (by Noorderlijn).



Smart Ways to Antwerp works together with Antwerp companies to improve commuter travel plans. At the moment, 28 big companies and 32 small companies (together about 27,000 employees) have signed the cooperation agreement. Additionally, the companies get the chance to let their employees try out different modes of transport.

The Antwerp Port Authority is further shaping and developing its truck guiding system. Logistic solutions are being implemented through the Antwerp marketplace for mobility and the Antwerp Port Authority

For more information please contact:
[Marijke De Roeck at City of Antwerp](#)



FACTS

Population:

- City: 520,000
- Province: 1.8 million

Land area in km²: 204.5 km²

Population density: 2,500 people per km²

CONSTANTA-

A MOTOR FOR DIALOGUE AND IMPLEMENTATION

CIVITAS PORTIS created a real interest at the local level in confronting the mobility issues faced by the Constanta city and metropolitan area and identifying sustainable solutions. The relationship between the city and the port improved considerably over the past year, thanks in part to the partnership between the municipality and the port administration established by the CIVITAS PORTIS project.



The initial results of this collaboration are already visible. The project helped improve access to the administrative area of Constanta Port, located in the vicinity of the historical centre of Constanta. The establishment of a Mobility Forum for the Constanta Metropolitan Area turned out to be a real catalyst for dialogue between all stakeholders in the field of mobility. The platform brings together public institutions and authorities, universities, businesses and representatives of civil society, aiming to ensure a permanent communication channel to identify and make the best decisions regarding the improvement of the city's mobility.

Constanta's activities include the re-organization of mobility in the city centre as well as the development of a new parking policy. One of the main goals is to reduce traffic and pollution in the busiest areas of the city by using equipment to measure and analyse traffic-related pollutants, identifying potential solutions and verifying the impact of implemented measures.

The involvement of Ovidius University, the Medgreen Cluster and the European Development Centre as project partners is an added value in terms of including the research and innovation component in the decision-making process regarding mobility.

The first 12 months of the implementation of PORTIS in Constanta have seen the successful engagement of all the local stakeholders on city mobility issues, along with fruitful cooperation between the city and the port.

For more information please contact:
[Adrian Craciun at Constanta Metropolitan Area Association](#)



FACTS

Population:
 - City: 317,832
 - Agglomeration: 491,498
 Land area in km²: 124.89 km²
 Population density: 2,273 people per km²

KLAIPEDA

IS IMPLEMENTING THE IDEA OF A CLEANER AND BETTER CITY

During the first year of CIVITAS PORTIS, Klaipeda City Municipality was very active in preparing its Sustainable Urban Mobility Plan (SUMP).



Eight events have been organized to discuss various SUMP-related problems and challenges. The events were open to city residents and other interested parties. They covered various topics, such as the promotion of public transport; the integration of non-motorized transport; modal split; traffic safety; the improvement of traffic management and mobility management; urban logistics; the inclusion of people with special needs; and the promotion of alternative fuels and less polluting transport. The meetings contributed to the identification of the needs of city residents and the key issues to be tackled through the SUMP process.

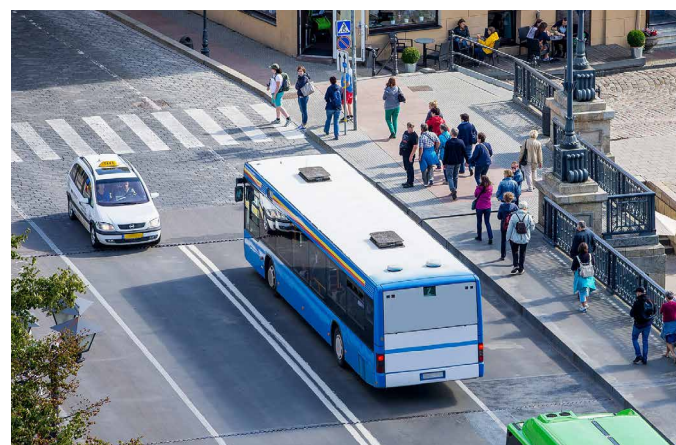
The Lithuanian Ministry of Finances selected Klaipeda City Municipality for the presentations of SUMP, as one of the most active members in public discussions. Klaipeda was declared a nominee for the annual Europe Sails Awards event organized by the Ministry.

A private company installed a bike sharing system in Klaipeda in spring 2017. Additionally, Klaipeda City Municipality took the decision to install a long-term bike storage system to further promote alternative mobility modes. A study is currently being conducted to identify the most effective public and residential city locations to install long-term bike storage hubs.



Moreover, Klaipeda decided to modernize the traffic management system and give priority to public transport on the main transport corridor nearest to the port. Klaipeda will be the first in the whole country to implement both, the prioritisation of public transport and a “green wave” in traffic management. Presently, Klaipeda has prepared the technical specifications for a public procurement process for the implementation of the “green wave”.

For more information please contact:
[Milda Milbutaitė at Klaipeda City Municipality Administration](#)



FACTS

Population:

- city: 154,326

- agglomeration: 329,146

Land area in km²: 98 km²

Population density: 1574,8 people per km²

TRIESTE-

A GOOD START FOR A CHANGE IN MOBILITY BEHAVIOUR

During the first CIVITAS PORTIS year, Trieste has started to devise and implement innovative solutions for sustainable urban mobility.



The project has made progress on all the measures but the most relevant so far are the following:

- The development of an innovative SUMP, able to integrate the Old Port of Trieste within the wider city mobility planning is one of the most challenging objectives of the project. The city has prepared a soon-to-be-launched tender, based on the project's best mobility practices and their innovation perspectives.
- Thanks to an inclusive approach in regards to sustainable mobility for cruising tourists, the city of Trieste is now working on the development of an app which will encompass several existing thematic routes, to facilitate the provision of additional sustainable mobility options for tourists and residents.



- In collaboration with local stakeholders, the city is getting ready to acquire an electric fleet and is drafting an effective electro mobility campaign.
- To further reduce traffic congestion, the city has been engaged in a continuous dialogue with local stakeholders to figure out how to provide real-time information on the availability of parking spaces and to develop an integrated parking management system.

For more information please contact:
[Giulio Bernetti at Municipality of Trieste](#)



FACTS

Population:
203,825

Land area in km²: 84.49 km²

Population density:
2,412 people per km²

THE PARTNERSHIP OF CIVITAS PORTIS

IN ABERDEEN,

the Aberdeen City Council works closely with the local partnership network including **NESTRANS** (the transport partnership for Aberdeen City & Shire); **Aberdeenshire Council**, the neighbouring local authority; **Aberdeen Harbour Board** and **Robert Gordon University**. Furthermore, Aberdeen works with **NHS Grampian**, **Police Scotland** and **Transport Scotland** as the project and its associated benefits are of high interest to them. The University of Aberdeen leads the evaluation tasks.



IN TRIESTE,

the living lab partnership for the city of Trieste is composed of the **Municipality of Trieste**, the Port System Authority of the Eastern Adriatic Sea; the **Port of Trieste**, a public entity that has the task of directing and coordinating all port operations; **AREA Science Park**, a national public research body acting as the local dissemination manager for PORTIS; **Trieste Trasporti**, the local public transport management body for Trieste; and the **University of Trieste** which is acting as the local evaluation manager for CIVITAS PORTIS.



IN ANTWERP,

The living lab consists of 7 local partners who are working together on CIVITAS PORTIS implementations. To improve accessibility between the city centre and the port, the **City of Antwerp** is working closely with the **Antwerp Port Authority**. A cooperation model is being set up, focusing on a common corporate marketing strategy and a shift in commuter traffic. The **Province of Antwerp** has relevant expertise in the field of (safe) cycling. **De Lijn** (a Flemish public transport company) and the **NMBS** (the Belgian public railway) are further developing and promoting trains, trams and busses. The consulting office **Traject** is responsible for evaluation within CIVITAS PORTIS and works closely together with all partners. **BAM** is responsible for some of the biggest infrastructure projects in Flanders.



IN KLAIPEDA,

3 local partners are working together in PORTIS project:

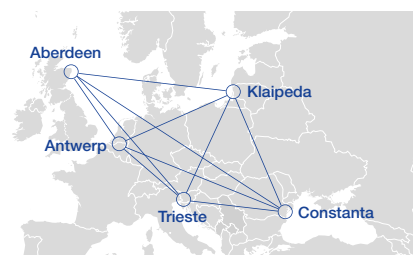
Klaipeda City Municipality Administration is a government organization, responsible for public procurement procedures and the implementation of measures. The **Klaipeda Public Transport Authority** is responsible for a study on the use of integrated public transport data. **Smart Continent LT UAB (SC LT) (SC LT)** is a Lithuanian SME. With its interdisciplinary research and consulting team it is responsible for preparing analyses and

studies on best practices in the field of sustainable urban mobility plans; the optimization of public transport systems; and bike sharing systems.



IN CONSTANTA,

the local partnership is an association of 7 entities, with specific roles that bring added value to the achievement of the project's objectives: **Constanta Municipality** creates the integrating and decision-making local framework and works together with the **Port Administration**, which is in charge of implementing mobility measures within its area of competence. The **Metropolitan Area Association** represents the entire metropolitan territory of Constanta and **Ovidius University** is in charge of the evaluation of measures. **Medgreen Cluster** serves as the research and innovation component and the **European Centre for Development** represents civil society and is responsible for public relations and promotion. **European Integrated Projects** contributes by highlighting the degree of integration of various European policies and regulations within the implemented measures.



UPCOMING EVENTS IN THE CITIES OF CIVITAS PORTIS

In 2018 a huge number of public events and meetings are planned:

ABERDEEN

Aberdeen is preparing for the **Internal Staff and Elected Member Briefings** in January 2018 and the Scottish Cities Alliance Low Carbon Working Group on the 19th of February 2018.

Business breakfast events will be organized throughout 2018 and a series of **lunchtime and evening talks** with staff and students at Robert Gordon University are planned for spring 2018.

ANTWERP

In February 2018, a **CEO meeting** will take place in Antwerp on the topic of sustainable commuter traffic, including all Antwerp companies that work together with Smart Ways to Antwerp. Several networks, thematic and **informational workshops** will be organized throughout 2018, aimed at both partners and citizens.

CONSTANTA

Beside **press conferences** with the Mayor, the University Rector and Constanta Commercial Port Director, Constanta will organise several **actions and campaigns to raise awareness** among commercial companies that operate in the Port of Constanta. **2018's CIVITAS PORTIS DAY** will take place in the second half of 2018.

KLAIPEDA

The Klaipeda City Municipality Administration is planning to hold a **local stakeholders network event** for presenting the developed SUMP in the first quarter of 2018.

TRIESTE

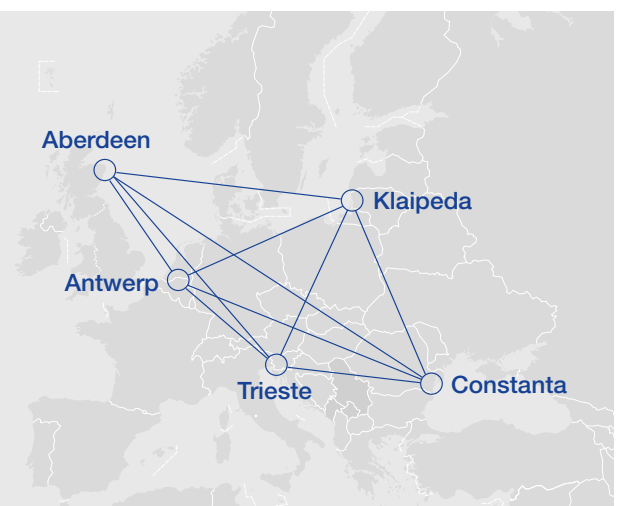
During spring 2018, Trieste intends to launch an **awareness campaign** on e-mobility solutions to involve the younger generations and increase the number of informed users among citizens. This awareness campaign will include public

round tables, forums and **thematic meetings** with relevant stakeholders. A **local photo exhibition** will be organized in May-June 2018.

For detailed information, exact dates and programmes please check the [CIVITAS event calendar](#).

CIVITAS PORTIS IMPACT

CIVITAS PORTIS wants to realise a decrease in commuters' traveling times between port and city (from -10% in Constanta and Klaipeda to -40% in Antwerp), a decrease in the number of commuter's trips by car (from -4% in Constanta and Klaipeda to -15% in Aberdeen) as well as an increase in the use of public transport (e.g. +15% in Trieste).



IMPRINT

All content and pictures were provided by the project partners.

The content of this newsletter does not reflect the official opinion of the European Union. Responsibility for the information and views expressed therein lies entirely with the authors.

Design & Layout: [FGM/COMMUNICAT](#)



The CIVITAS Initiative is co-financed by the European Union