

# Inclusive Shared Mobility

Shaping resilient, safe and inclusive systems for shared mobility

*A CIVINET study tour and networking event*

*12 May 2026*

*Octavia Stepan*

*European Climate, Infrastructure and Environment Executive Agency (CINEA)*

# Boosting green growth and clean industry in Europe



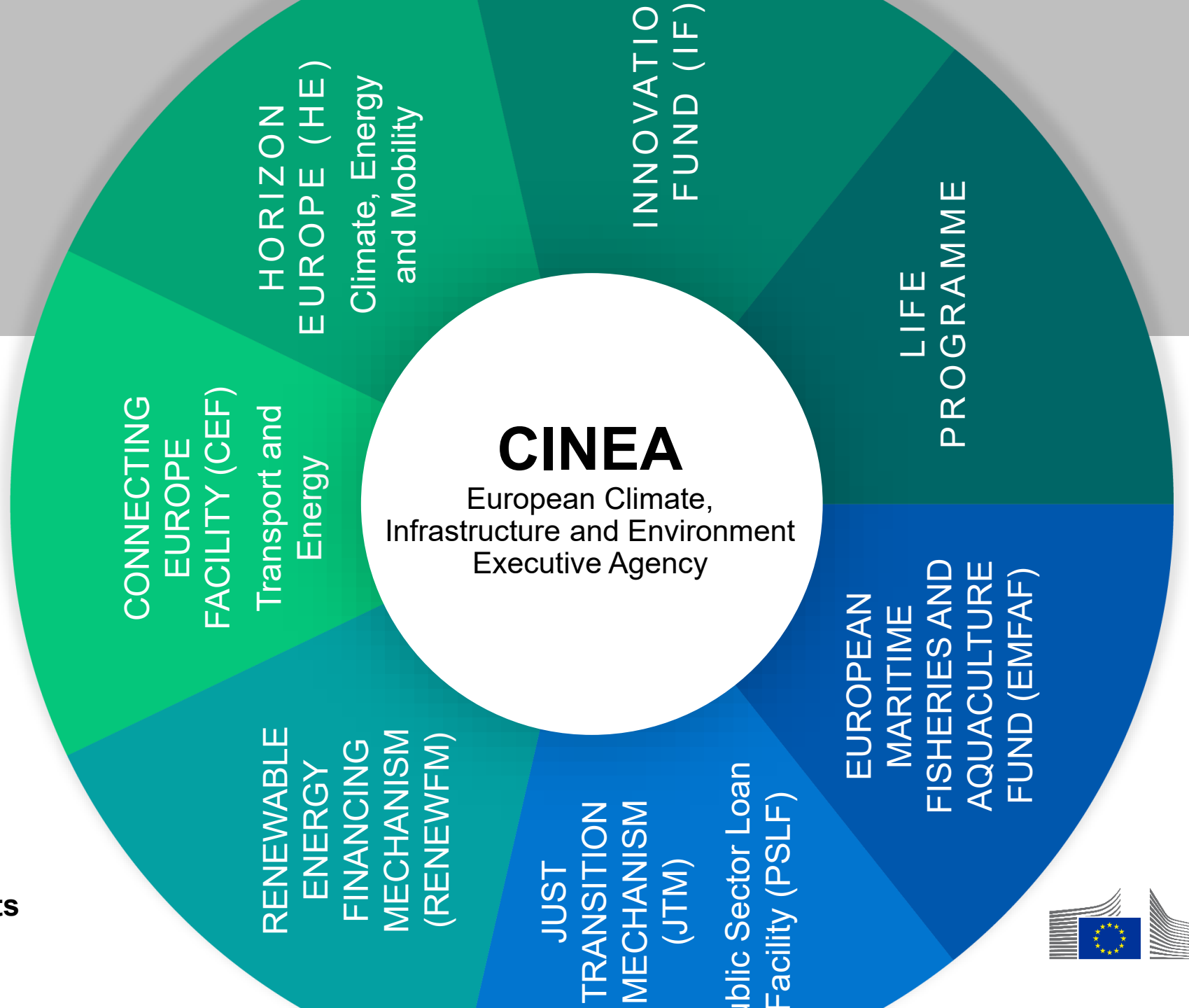
**€67 billion**  
2021-2027




**600+**  
Staff



**3900**  
Ongoing projects





*“The Programme should support **the creation, better diffusion and transfer of high-quality and excellent knowledge and high-quality technologies in the Union...**”*

*“Support and strengthen the **uptake and deployment of innovative and sustainable solutions in the Union’s economy...**”*

*Horizon Europe Regulation, 2021*

# Urban Mobility project portfolio

2021-2025

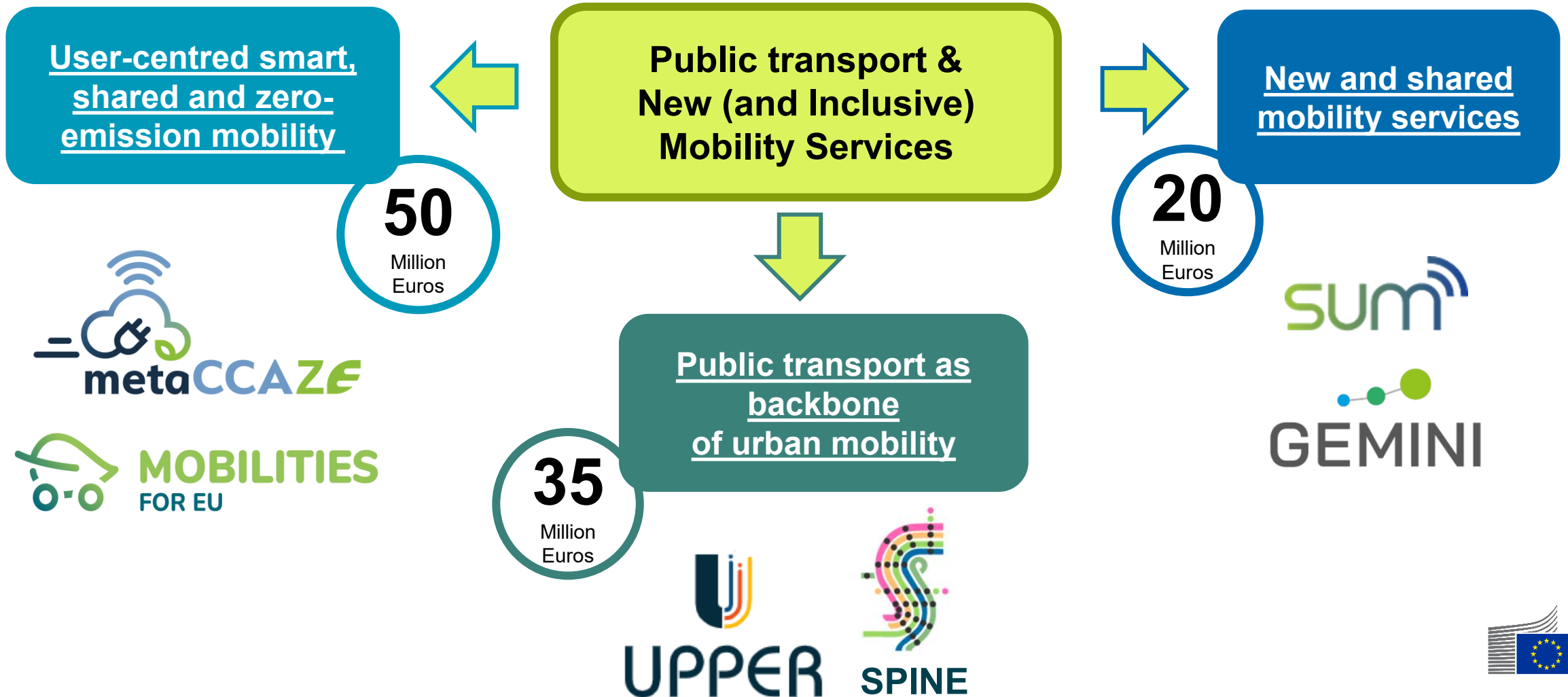
57 projects

## Public transport & shared mobility



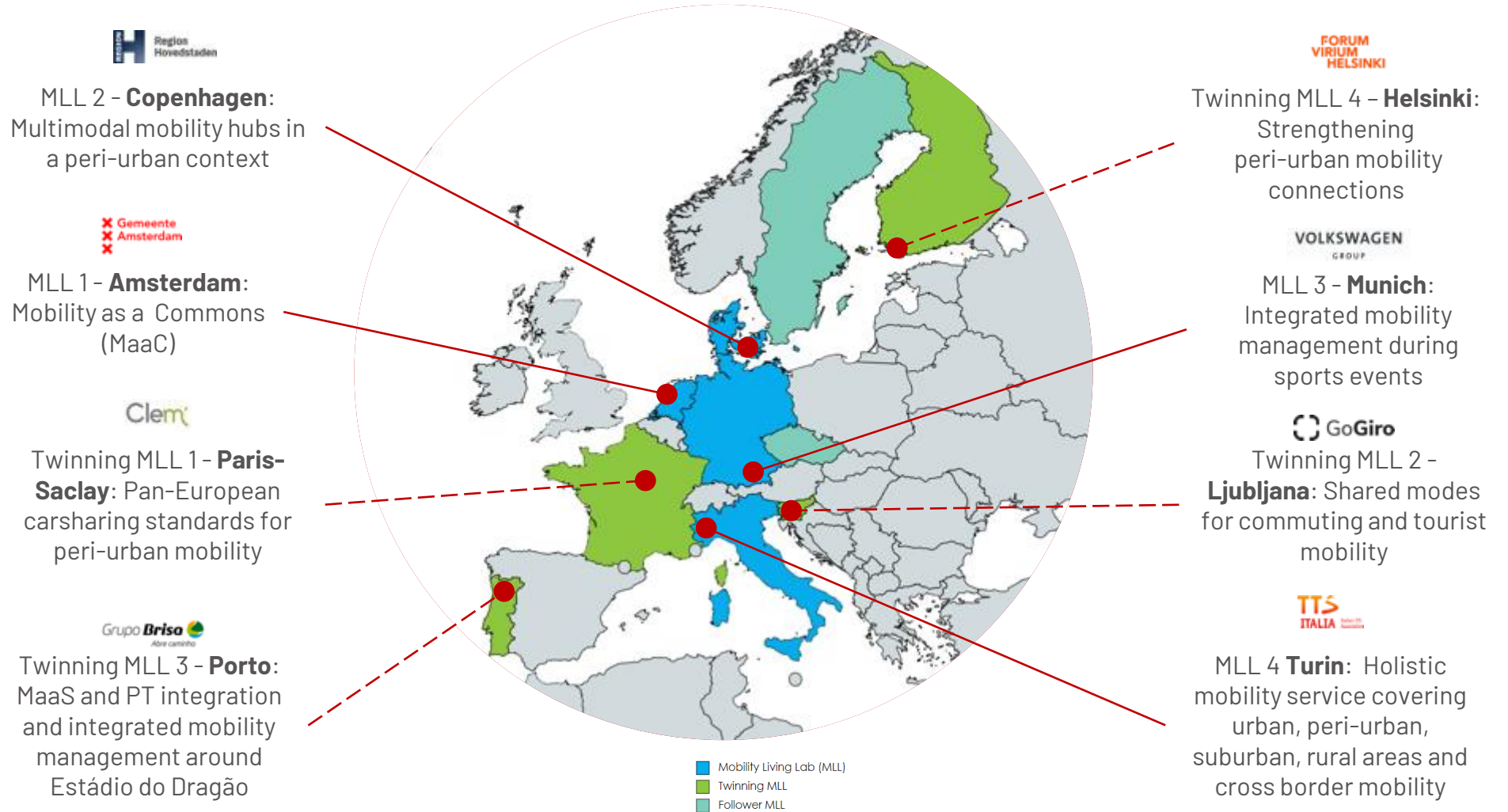
# URBAN MOBILITY

## Public transport and New Mobility Services



# GEMINI Mobility Living Labs

8 implementation roadmaps and operational plans of NMS

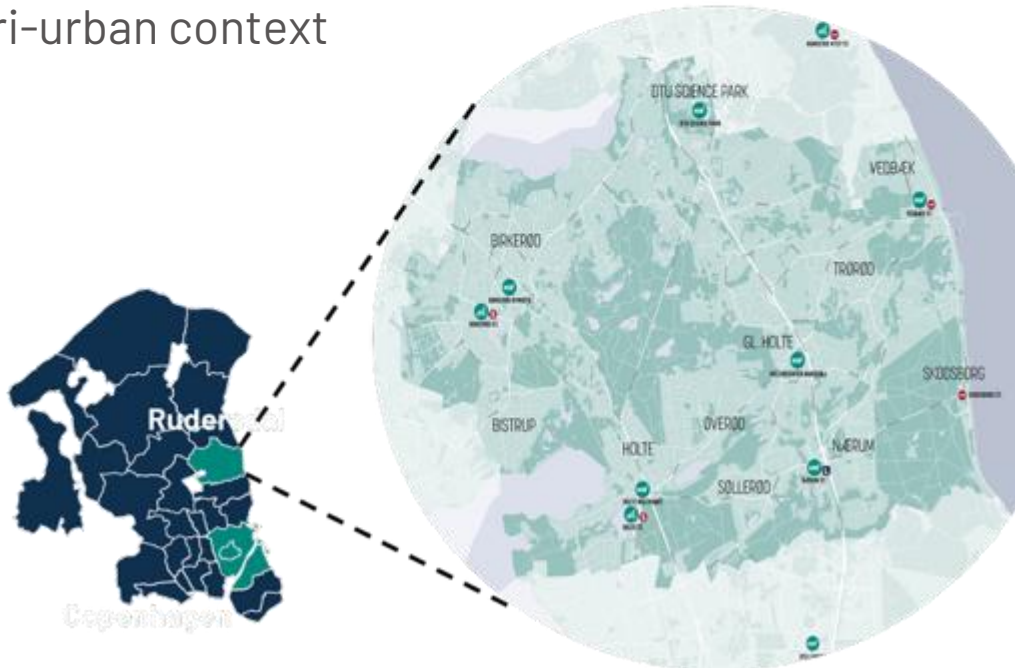
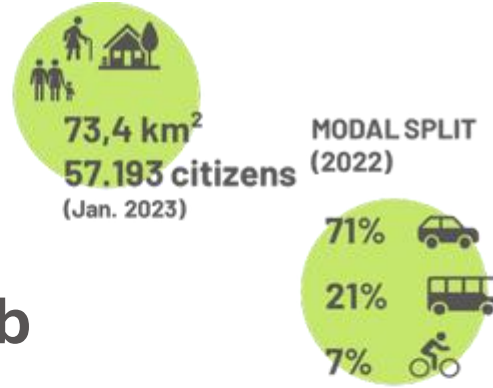


# Problem context in Rudersdal

## Why the living lab was needed in a suburban / peri-urban setting

### Copenhagen Mobility Living Lab

Multimodal mobility hubs  
in peri-urban context



- Shared mobility is well established in large cities, but much less proven in Danish suburban and peri-urban areas.
- The living lab tested whether mobility hubs and shared bikes/cars could improve access to trains, buses and workplaces in Rudersdal, 20 km north of Copenhagen.
- Municipal knowledge and guidance on shared mobility were still limited, making governance, permits and local coordination central issues.
- Key uncertainties included business viability outside the city centre, user adoption, parking and charging availability, and political support for long-term continuation.

# Solutions and interventions implemented



## Mobility HUBs

**6 HUBs** are placed connected to public transport, including information signs, markings, and wayfinding.



## Dott e-bikes

**200 vehicles** can be picked up at designated HUBs and dropped off at another (hybrid)



## Green Mobility

The **20 fully electric cars** can be picked up and dropped off anywhere within a designated area.



## KINTO

The **12 station-based vehicles** need to be picked up and returned to the same HUB.

# Achievements

Implementation shows three distinct business and operational patterns



## Dott (bike sharing)

**19,159 trips | 14,652 users**

- The service fulfilled its goal of supporting public transport.
- Parking accessibility was a decisive factor, with missed-demand analysis revealing where no hub or vehicle was nearby.
- Dott continued operating in Rudersdal and saw a path toward a sustainable business with further development.



## GreenMobility (free-floating EV cars)

**21,776 trips | 15,981 users**

- Usage reached about 40 cars per day versus an initial expectation of 20.
- Smaller hubs, charging, free parking, and price/incentive design helped avoid idle vehicles.
- Customer satisfaction (4.0/5) in Rudersdal exceeded the operator's average in Copenhagen and Aarhus.



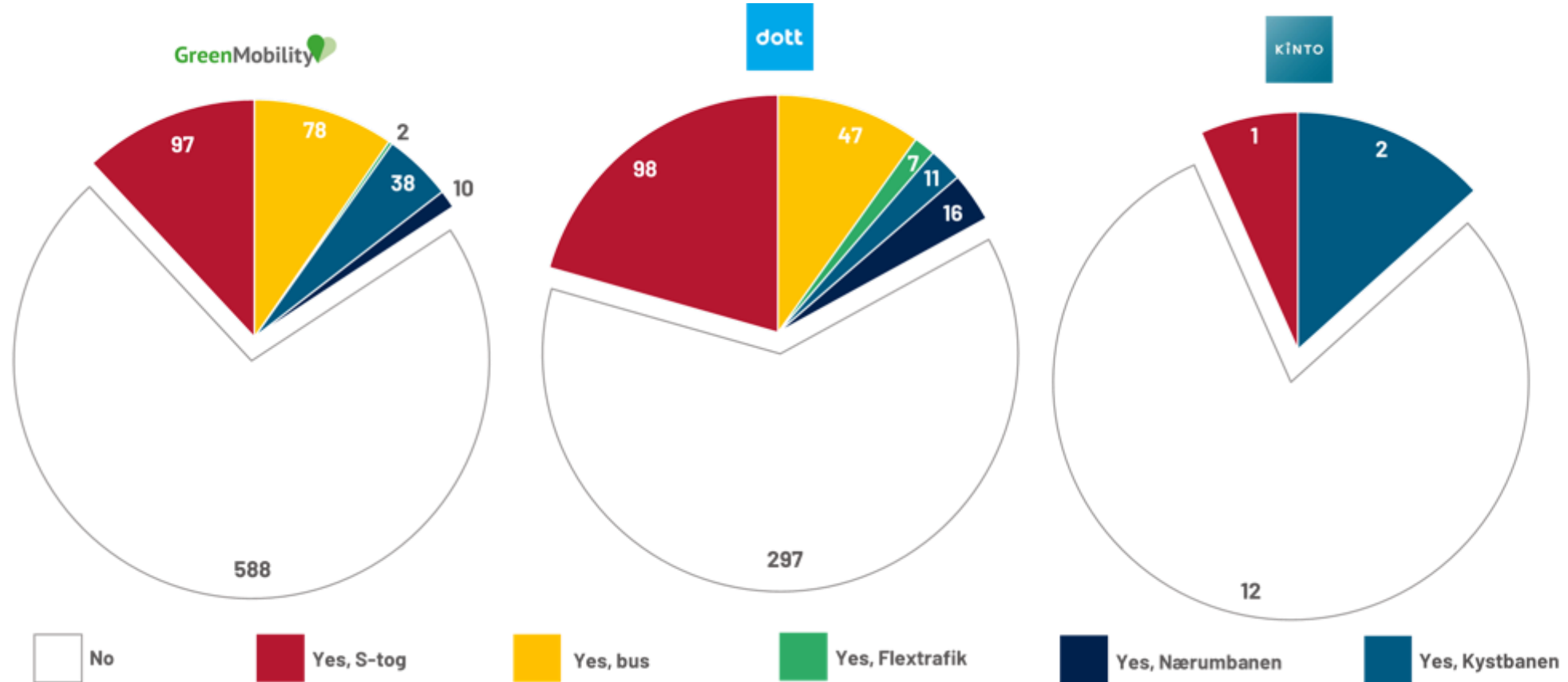
## KINTO (station-based cars)

**687 trips | 659 users**

- Uptake was slower and strongest in mixed-use or business areas, especially where KINTO already had a customer base.
- The operator chose to continue with a reduced fleet concentrated around stronger-performing locations such as DTU Science Park.

# Outcomes and impacts achieved or already visible

Connection to public transportation: 30% of trips were connected to public transport



# Outcomes and impacts achieved or already visible

Usage, satisfaction and intermodality indicate that shared mobility can work beyond central Copenhagen

**40,000+**

total trips across Dott, GreenMobility and KINTO by July 2025

**30%**

of trips combined with public transport (survey-based)

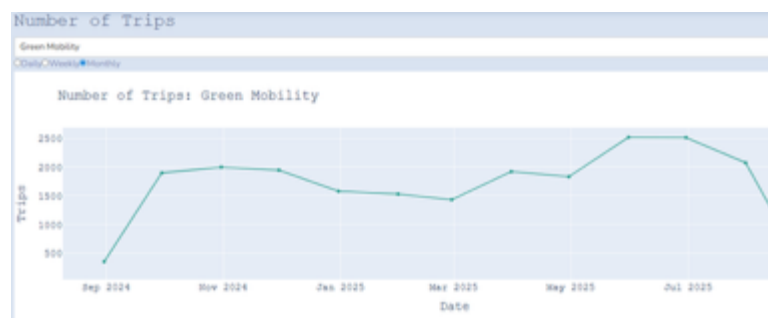
**≥4.2/5**

average customer satisfaction across operators

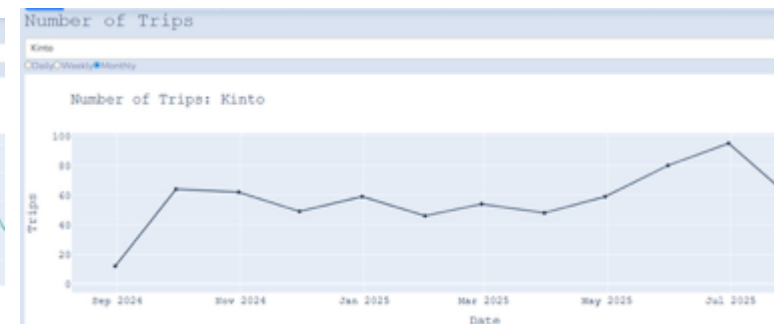
**Continuation after the pilot: all three operators stayed in Rudersdal, though KINTO reduced fleet size while focusing on stronger locations.**



Dott seasonality: strong summer growth after winter low season



GreenMobility: comparatively stable monthly usage



KINTO: slower uptake; weaker than typical holiday pattern

## Key findings

- Around 22,000 car-sharing trips and 20,000 bike-sharing trips were recorded by July 2025.
- The municipality decided to continue the services without EU funding.
- Survey and spatial analyses suggest meaningful connections between shared mobility and public transport.

# The metaCCAZE mission

metaCCAZE aims to revolutionise **mobility in European cities**, serving both **passengers and freight**, with innovative **electric, automated, and connected solutions** designed to make transportation **smarter, net zero, and more efficient** for all.



## 4 Trailblazer Living Labs

- Amsterdam (NL)
- Munich (DE)
- Tampere (FI)
- Limassol (CY)



## 6 Follower Living Labs

- Athens (EL)
- Krakow (PL)
- Gozo (MT)
- Milan (IT)
- Miskolc (HU)
- Paris-Saclay (FR)



- 📍 4 Trailblazer Living Labs
- 📍 6 Follower Living Labs
- 📍 10 Observer Cities

## Living Labs and Observer Cities

### 4 Trailblazer Living Labs



Cross-fertilisation



Demonstrate widely and for longer time:  
17 metaCCAZE-designed shared and zero emissions use cases that have been infused with metaLIInnovations.



Cross-fertilisation



Transfer / Replicate

### 6 Follower Living Labs



Cross-fertilisation



Demonstrate at smaller scale and for shorter time:  
10 metaCCAZE-designed shared and zero emissions use cases that have been infused with metaLIInnovations.

Transfer

Transfer



## 10 Observer Cities



Engaged in observing, learning, and exchanging insights to support replication and scale-up.

# The metaCCAZE solutions



User-centered services for **accessible, economically viable multimodal mobility**

At the intersection of:



META DOMAIN	SOLUTION TYPES		
1. PASSENGER MOBILITY SERVICES	Autonomous Shuttle Feeder Service	On-Demand Electric Public Transport	Shared Micromobility Systems
2. URBAN FREIGHT & LOGISTICS	Autonomous Logistics Vehicles	Autonomous Waterborne Logistics	Cargo-Bike Urban Logistics
3. MULTIMODAL INTEGRATION INFRASTRUCTURE	Multimodal Urban Hubs		
4. DIGITAL TRAFFIC & INFRASTRUCTURE MANAGEMENT	Dynamic Curbside Management	V2X Traffic Infrastructure	Adaptive Micromobility Speed Governance
5. ELECTRIFICATION & ENERGY INTEGRATION	Electric Bus Fleet Integration	Charging Infrastructure Deployment	Transport-Energy Integration Platforms
6. BEHAVIOURAL & POLICY INSTRUMENTS	Tradable Mobility Credits		

SUSTAINABLE MOBILITY

INCLUSIVE ACCESS

SMART & EFFICIENT SYSTEMS

CLEAN ENERGY INTEGRATION

RESILIENT & FUTURE READY CITIES



## LIMASSOL – On-demand mini-buses service



- Service launch: 6th of October
- School visits to promote and disseminate the on-demand mini-bus service
- Local Press and Stakeholder Conference
- Daily average booking: 60 students
- Operational schedule: 6 days per week
- 5 operational mini-buses
- 2 buses pending registration
- 2 e-buses are pending

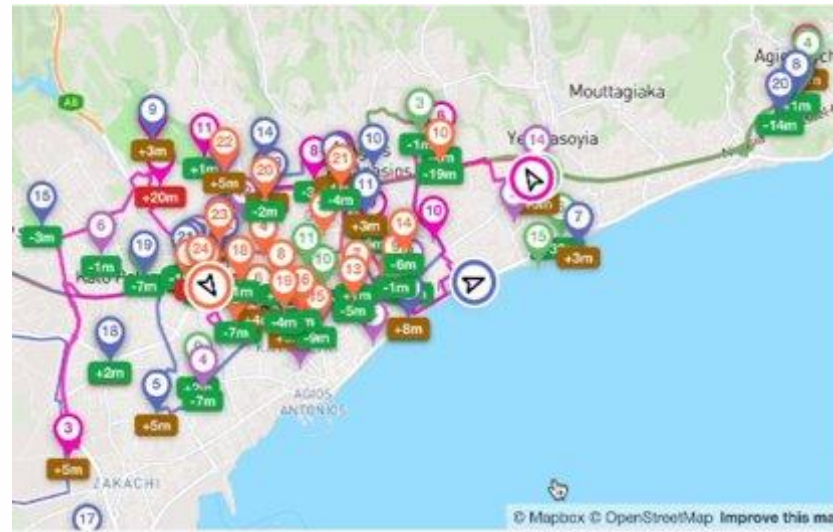


# LIMASSOL – On-demand mini-buses service

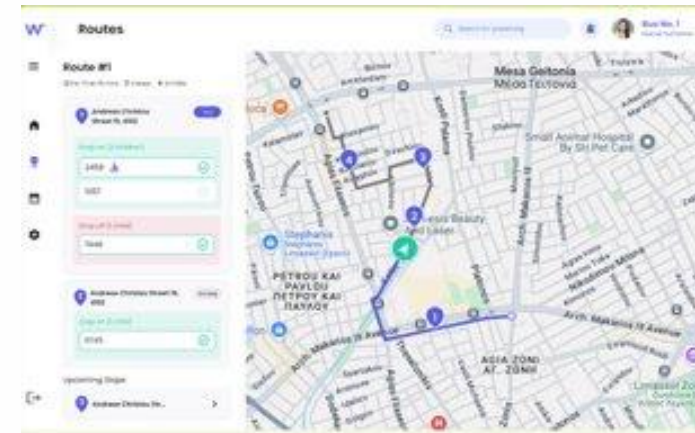


## metaInnovation

Fleet Management



Drivers app



Users App



Co-funded by  
the European Union



# LIMASSOL– On-demand mini-buses service



## Impact (since Oct 2025)

**339** families  
use WeeDRIVE

**386** teens switched  
from private car to  
WeeDRIVE

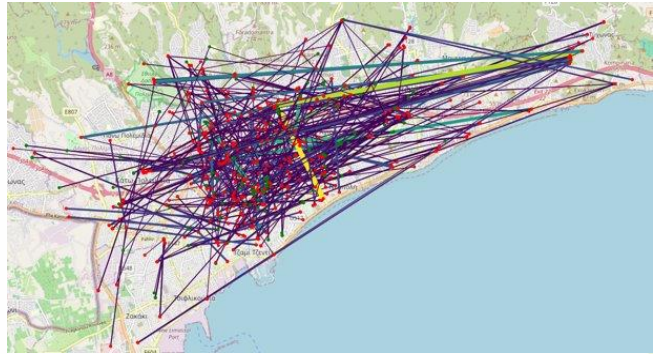
**3382** rides  
completed

**3382** car trips  
removed from the  
network

Parents saved  
**161** days

**2%** of the rides faced  
delays

On-deman mini-buses  
service Data



PT routes



## FINDINGS so far....

### Governance & Market Design for Competitive and Resilient Systems

- **multilevel governance is the core enabler of innovation** – without alignment among key actors, tested-proven solutions fail to scale
- **(multilevel) governance determines scalability / transferability** – cities can only replicate what their governance systems can support
- **innovative procurement** (PCP, group buyers) to strengthen European market competitiveness





## FINDINGS so far....

### Trusted, Secure and Interoperable Data Ecosystems

- **Common standards & data spaces for competitive digital ecosystems**
  - Standardised open, lightweight APIs based on **common data standards is key**
  - **Create legal and commercial frameworks upfront** (data sharing agreements, procurement clauses, liability/insurance rules)
- **AI-enabled mobility services:**
  - Demand-responsive transport (efficiency and adaptability)
  - MaaS and multimodal optimisation
  - Digital Twins for planning and operation





## FINDINGS so far....

- **On-demand transport services equipped with AI-based routing** – replace fix-schedule transport services in areas with low density of inhabitants
- **Multimodal Mobility hubs and Multimodal Journey Planner Apps** – play an important role in improving the satisfaction of the users of public transport and NMS + is key for the integration between passengers and goods transport
- **Shared-mobility services** (e.g. bike sharing) **integrated with the public transport systems** efficiently cover the first and last-mile trips
- **Smart parking management strategies** (e.g. monetisation, P+R, electric charging) – shape the behaviour of citizens and substantially reduce the traffic of private vehicles in cities



# FUNDING OPPORTUNITIES 2026

Topic ID	Topic title	Budget	Opening	Deadline	Max. contrib	Exp. grants
HORIZON-CL5-2026-10-D6-10	<u>Enhanced resilience in multimodal passenger transport through digital technologies and generative and discriminative AI</u>	10.00 million	04/06/2026	08/10/2026	5.00 million	2
HORIZON-CL5-2026-10-D6-06	<u>Increasing competitiveness and resilience of multimodal freight transport and logistics for competitive supply chains</u>	20.00 million	04/02/2026	08/10/2026	6.50 million	3
HORIZON-MISS-2026-04-CIT-01	<u>Energy efficient urban and sub-urban public transport, complemented by shared mobility</u>	20.00 million.	04/02/2026	08/10/2026	10.00 million	2
HORIZON-MISS-2026-04-CIT-02	<u>Transition to low-temperature heating solutions in multi-apartment buildings</u>	18.00 million.	04/02/2026	08/10/2026	6.00 million	3
HORIZON-MISS-2026-04-CIT-NEB-B4P-CCRI-03	<u>Introducing circular economy models in the construction sector, from buildings to city scale</u>	47.50 million.	04/02/2026	08/10/2026	9.50 million	5



# FUNDING OPPORTUNITIES 2027

Topic ID	Topic title	Budget	Opening	Deadline	Max. contrib	Exp. grants
HORIZON-MISS-2027-07-CLIMA-CIT-NEB-01	<u>Urban nature: supporting restoration of urban ecosystems, along urban transport networks and in the built environment</u>	40.00 million	09/02/2027	22/09/2027	10.00 million	4
HORIZON-MISS-2027-07-CLIMA-CIT-CCRI-02	<u>Deploying innovative wastewater management, treatment and valorisation solutions in European cities and regions in the context of climate change</u>	28.50 million	09/02/2027	22/09/2027	9.50 million	3
HORIZON-CL5-2027-05-D6-08	<u>Enhancing Mobility for All: affordable, reliable, and accessible multimodal transport for inclusive rural and urban connectivity – Societal Readiness pilot</u>	21.00 million	03/06/2027	07/10/2027	7.00 million	3
HORIZON-MISS-2027-04-CIT-03	<u>Inclusive and climate resilient multimodal passenger hubs enhancing modal shift towards sustainable transport and shared mobility</u>	18.00 million	09/02/2027	07/10/2027	9.00 million	2
HORIZON-MISS-2027-04-CIT-CCRI-04	<u>Advancing circular logistics solutions in cities</u>	15.00 million	09/02/2027	07/10/2027	7.50 million	2



# Thank you



Octavia Stepan, [Octavia.STEPAN@ec.europa.eu](mailto:Octavia.STEPAN@ec.europa.eu)

© European Union 2025

Unless otherwise noted the reuse of this presentation is authorised under the [CC BY 4.0](https://creativecommons.org/licenses/by/4.0/) license. For any use or reproduction of elements that are not owned by the EU, permission may need to be sought directly from the respective right holders.

