



GREEN-LOG transforms last-mile delivery by advancing **economically, environmentally, and socially sustainable logistics practices**. It uses cutting-edge technologies to develop and deploy real-world solutions across diverse urban logistics environments.

GREEN-LOG has developed and demonstrated an integrated portfolio of digital tools, connected services, and operational concepts to support more sustainable, efficient, and collaborative last-mile logistics.

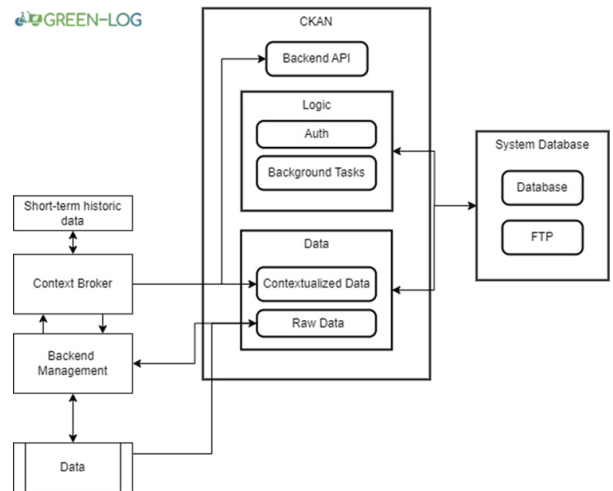


GREEN-LOG technical solutions

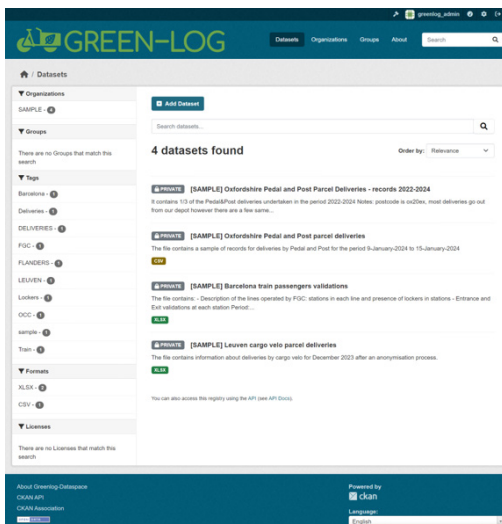
Tools and platforms for optimising last-mile logistics

City Logistics Dataspace

A secure digital environment that enables logistics stakeholders to exchange and use data while retaining full control and data sovereignty. It integrates data acquisition, contextualisation, and access services to support real-time logistics management. By transforming raw data into interoperable, context-rich information, it enables better coordination and decision-making. Designed for real-world use, it is accessible even to smaller companies, supporting more efficient and sustainable urban logistics.



City Logistics Dataspace building blocks

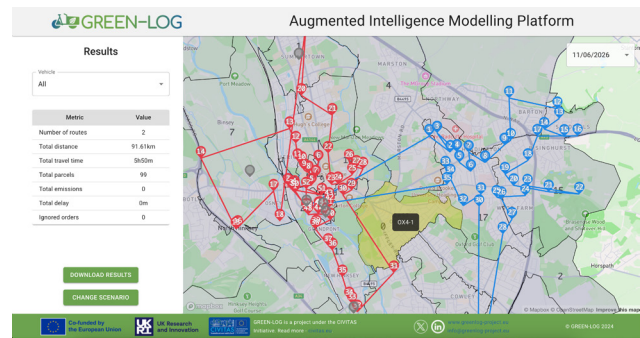


CKAN implementation for GREEN-LOG Dataspace



Augmented Intelligence Modelling Platform (AIMP)

A comprehensive decision-support platform that helps logistics operators and city authorities plan, optimise, and evaluate urban freight operations. It combines demand forecasting, route optimisation, and simulation to assess different delivery strategies and fleet configurations. It turns data into practical insights for both planning and day-to-day operations, helping organisations improve efficiency, reduce costs, and support more sustainable logistics in complex urban environments.

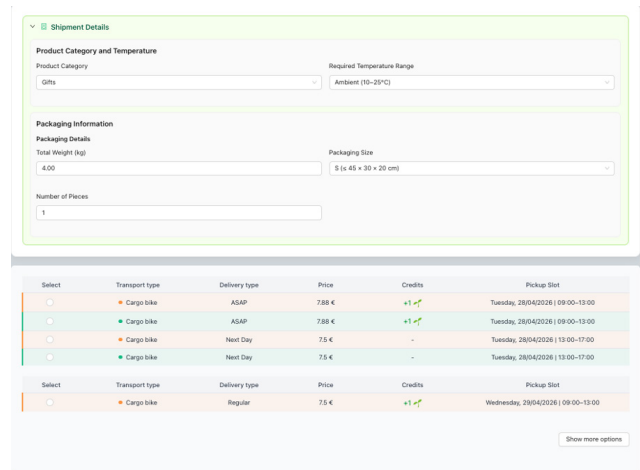


AIMP - General metrics view

Real-time and connected services

Logistics-as-a-Service (LoaS) Marketplace

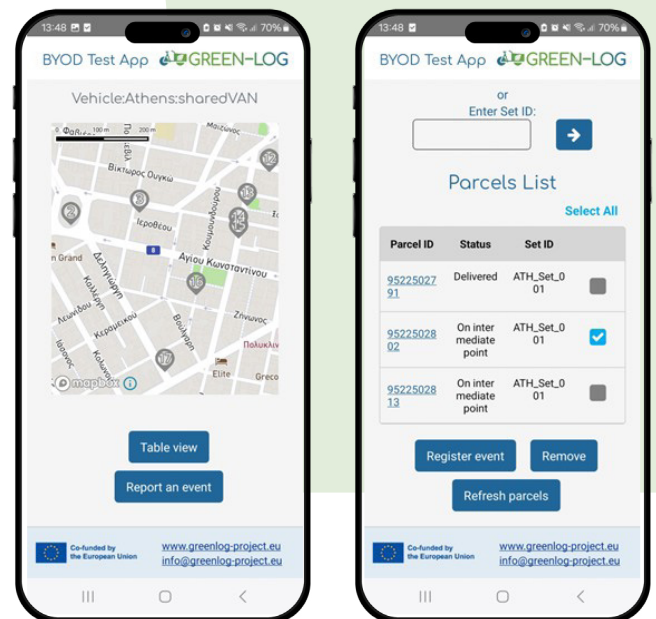
A web-based platform that connects logistics demand and supply under sustainability-aware and policy-informed conditions. It allows users to find, compare, and book delivery services, place pick-up and delivery orders, and select options based on cost, timing, and sustainability. Through dynamic pricing and incentive mechanisms, it encourages more sustainable logistics choices. Designed as a flexible and standalone application, it adapts to different urban contexts and supports businesses, consumers, logistics providers, and public authorities.



LoaS quote results

Bring-Your-Own-Device (BYOD)

A user-friendly mobile application that supports drivers and logistics operators in the execution and monitoring of urban deliveries. It enables field personnel to access assigned routes, manage delivery tasks, update parcel status, and capture proof of delivery directly from their own devices. Fully integrated with the wider digital ecosystem, it ensures real-time data exchange and operational visibility. Its modular design supports easy adoption by small and medium-sized logistics operators, while allowing more advanced functionalities to be added as needs evolve.

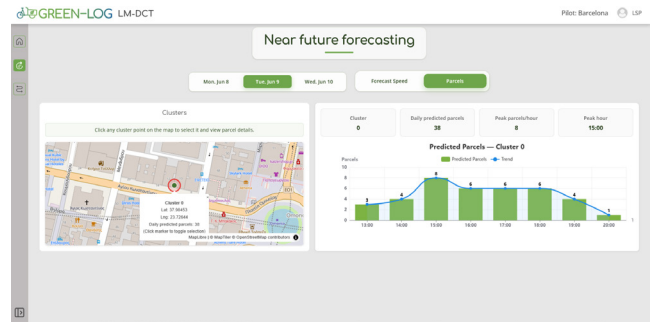


Last Mile Digital Control Tower (LM-DCT)

A centralised, data-driven platform that supports logistics providers and city authorities in managing urban freight operations. It combines real-time monitoring, advanced analytics, and interactive dashboards to provide a clear and integrated view of logistics activities. By bringing together forecasting, routing, marketplace data, and field operations, it supports more coordinated and informed decision-making. The platform also integrates city policies and sustainability measures, helping align daily operations with environmental and regulatory goals.



LM-DCT - Marketplace metrics dashboard



LM-DCT - Near future forecasting - Parcels

These solutions are supported by additional **AI- and machine-learning-based components** designed to enhance predictive capabilities and operational responsiveness.

Beyond digital innovation

GREEN-LOG also demonstrated practical operational concepts for sustainable urban logistics, including **collaborative delivery models, micro-consolidation approaches, cargo-bike logistics, multimodal delivery solutions** involving public transport, and **autonomous delivery applications**.



Cargo bike – Leuven



Robot and train – Barcelona



Mobile Delivery Hub – Oxfordshire



White-label electric van – Athens

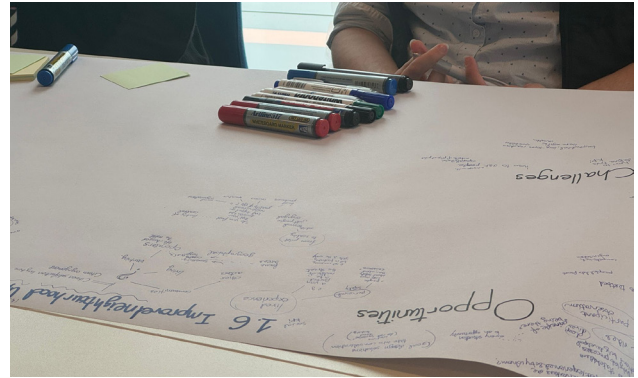


Delivery robot – Ispra



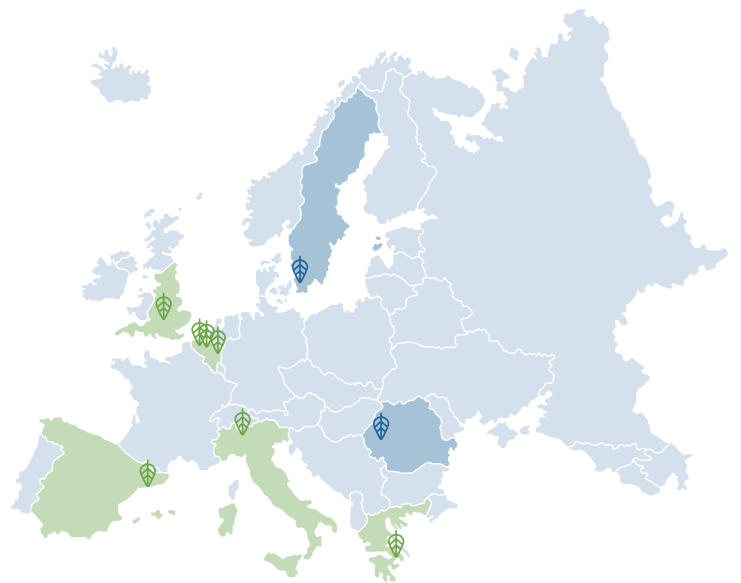
Co-creation – A key success factor

A key result of the project is that these solutions were not developed in isolation, but co-created with logistics operators, public authorities, and local stakeholders. This collaborative approach ensures strong alignment with operational realities and local policy contexts.



Real-world validation

The solutions were tested and validated in five European Living Labs—**Athens**, **Barcelona**, **Flanders**, **Oxfordshire**, and **Ispra**—demonstrating their applicability across diverse urban and peri-urban environments. Their replication potential was assessed in two follower cities - **Arad** and **Helsingborg**.



What the solutions enable

- **Optimising delivery planning and operations**
through demand forecasting, route optimisation, and real-time monitoring
- **Enabling secure logistics data sharing**
among public and private actors without compromising sensitive business information
- **Supporting collaborative logistics models**
allowing multiple stakeholders to coordinate deliveries more efficiently
- **Reducing congestion and emissions**
through low-emission, multimodal, and consolidated delivery models
- **Supporting city authorities**
in integrating sustainability and policy objectives into logistics operations
- **Facilitating logistics marketplace services**
by connecting shippers, logistics providers, and end users
- **Supporting replication in other cities**
through transferable and scalable operational models

Partners



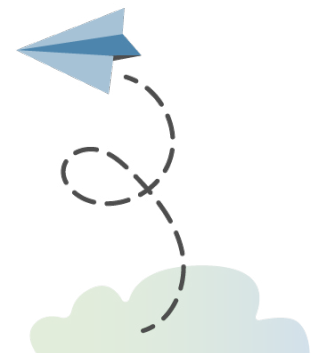
Project Coordinator:
Netcompany S.A.

Contact us:
info@greenlog-project.eu

Visit our website:
www.greenlog-project.eu

Find our public deliverables on Zenodo:
[GREEN-LOG HE Community](#)

Find us on:



GREEN-LOG is a project under the CIVITAS Initiative.
Read more - civitas.eu