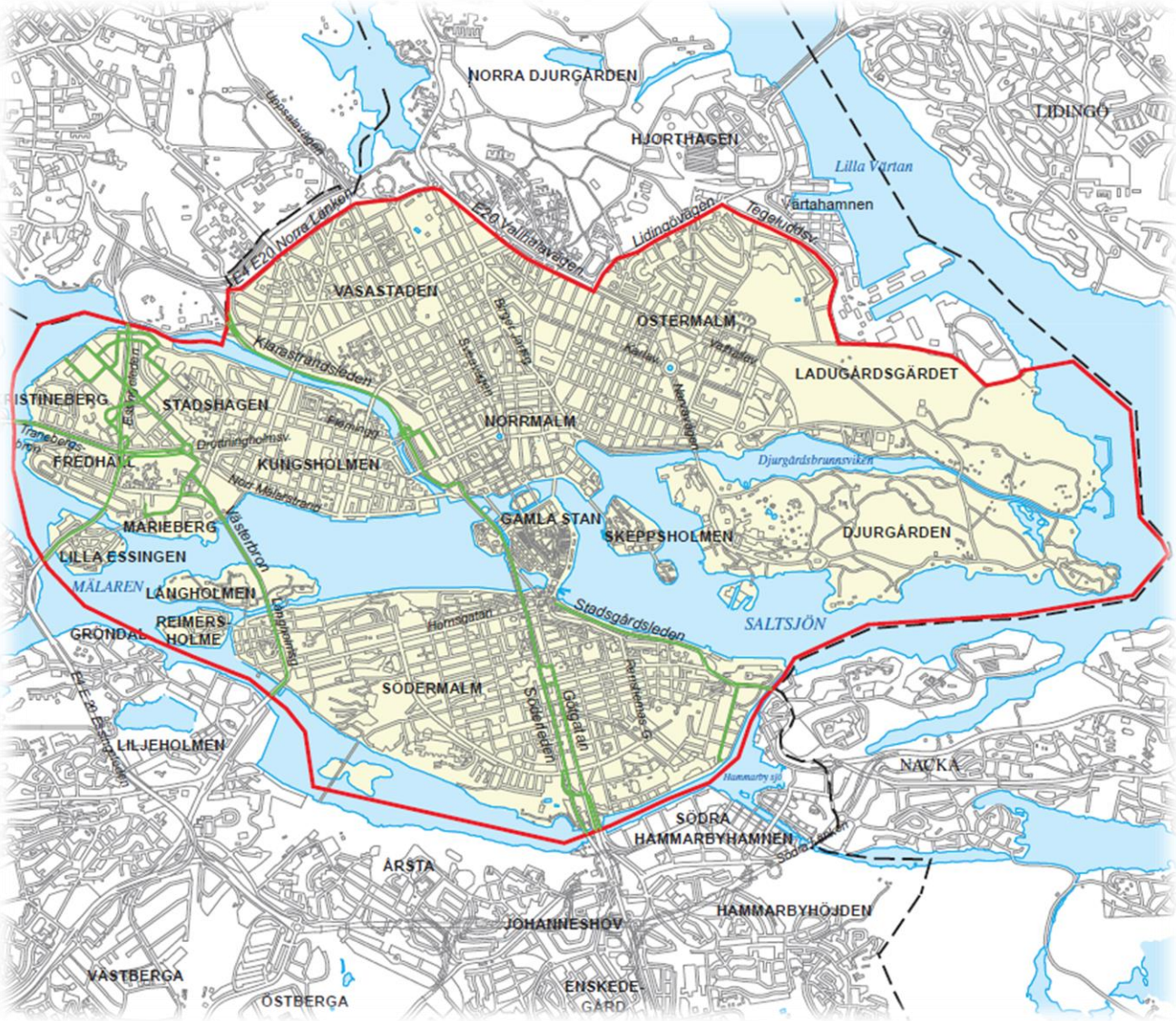
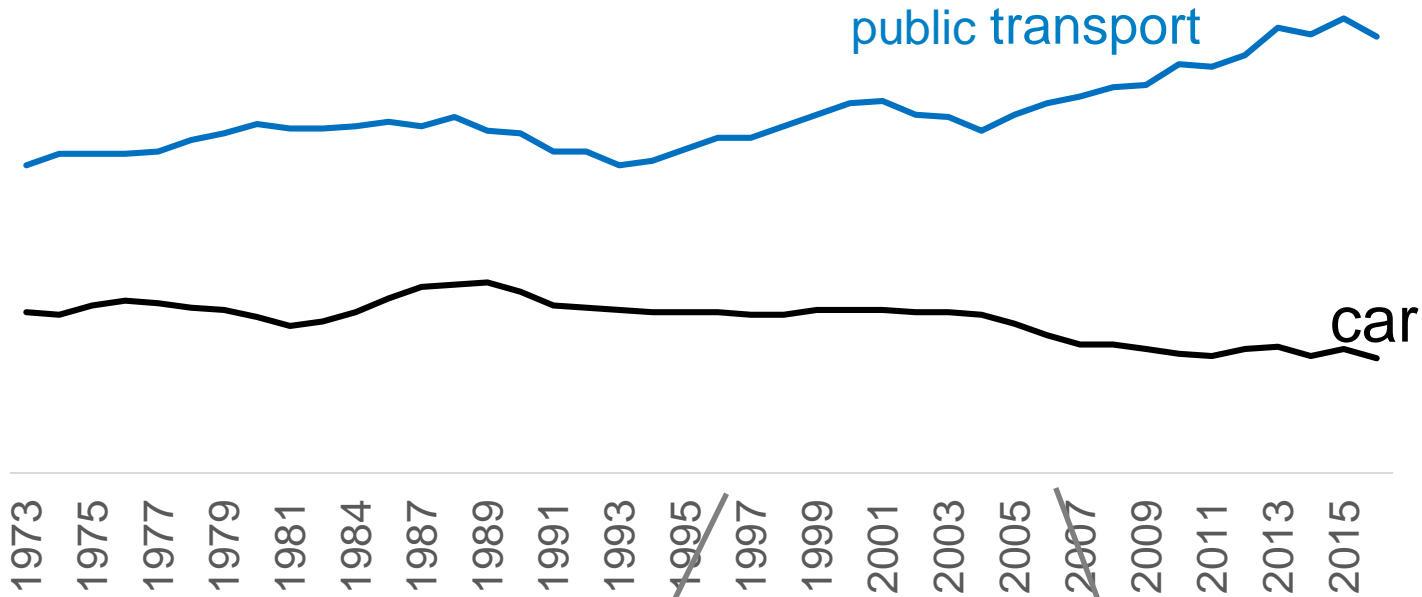


Should Stockholm ban older cars from its inner city?



traffic counts to inner city, morning peak



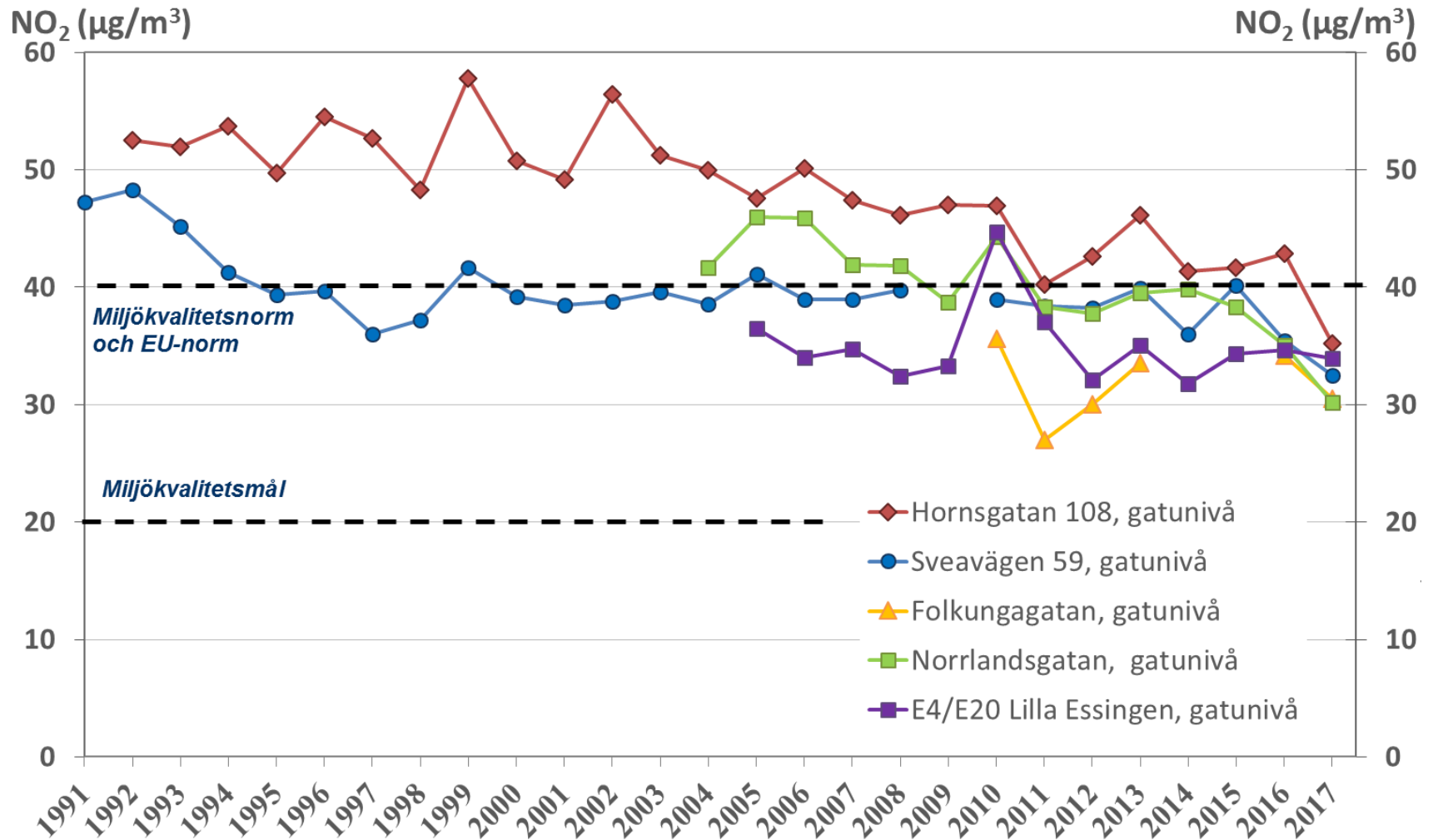
heavy vehicle
LEZ introduced

congestion
charge cordon
introduced

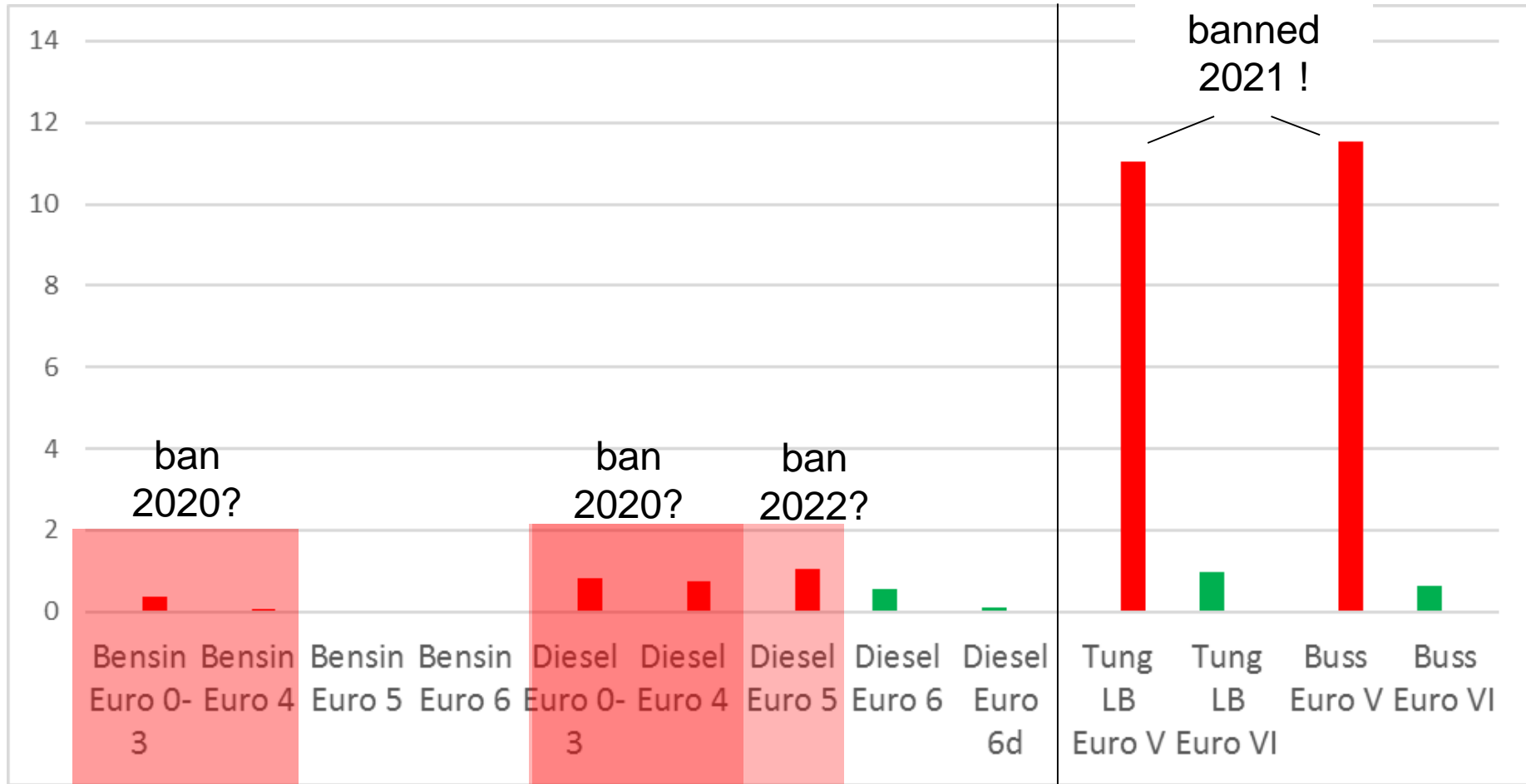
"prioritize space
efficient modes"

Air quality

air quality improving



NOx g/km real-driving emissions

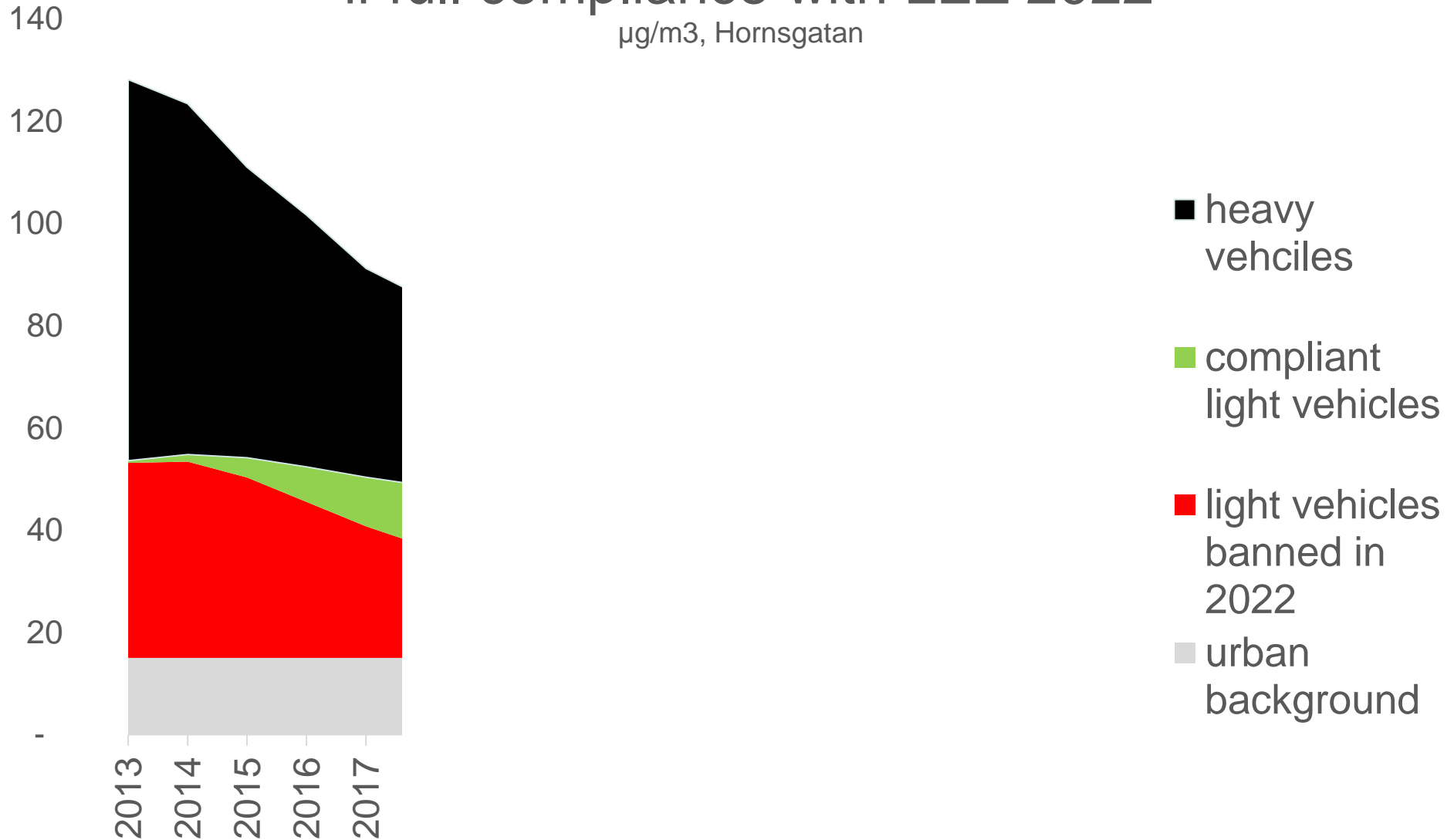


cars & light trucks

heavy vehicles

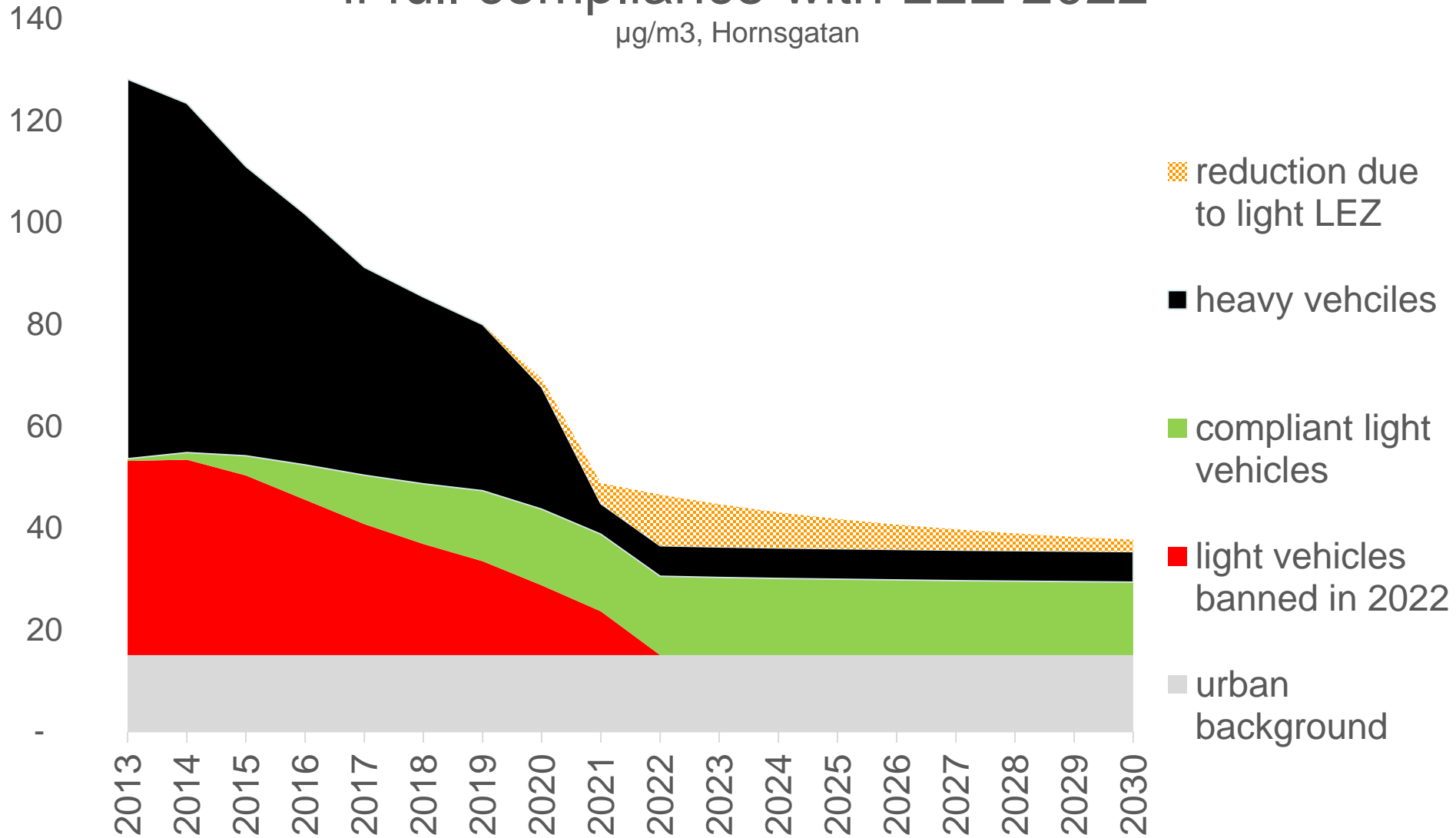
NOx concentration estimate if full compliance with LEZ 2022

µg/m³, Hornsgatan



NOx concentration estimate if full compliance with LEZ 2022

$\mu\text{g}/\text{m}^3$, Hornsgatan



Costs

- 82% of county light-vehcile fleet visits LEZ per year
- LEZ would ban 1/3 of county fleet in 2020: 300,000 vehicles
- infrequent visitors, private owners, lower income



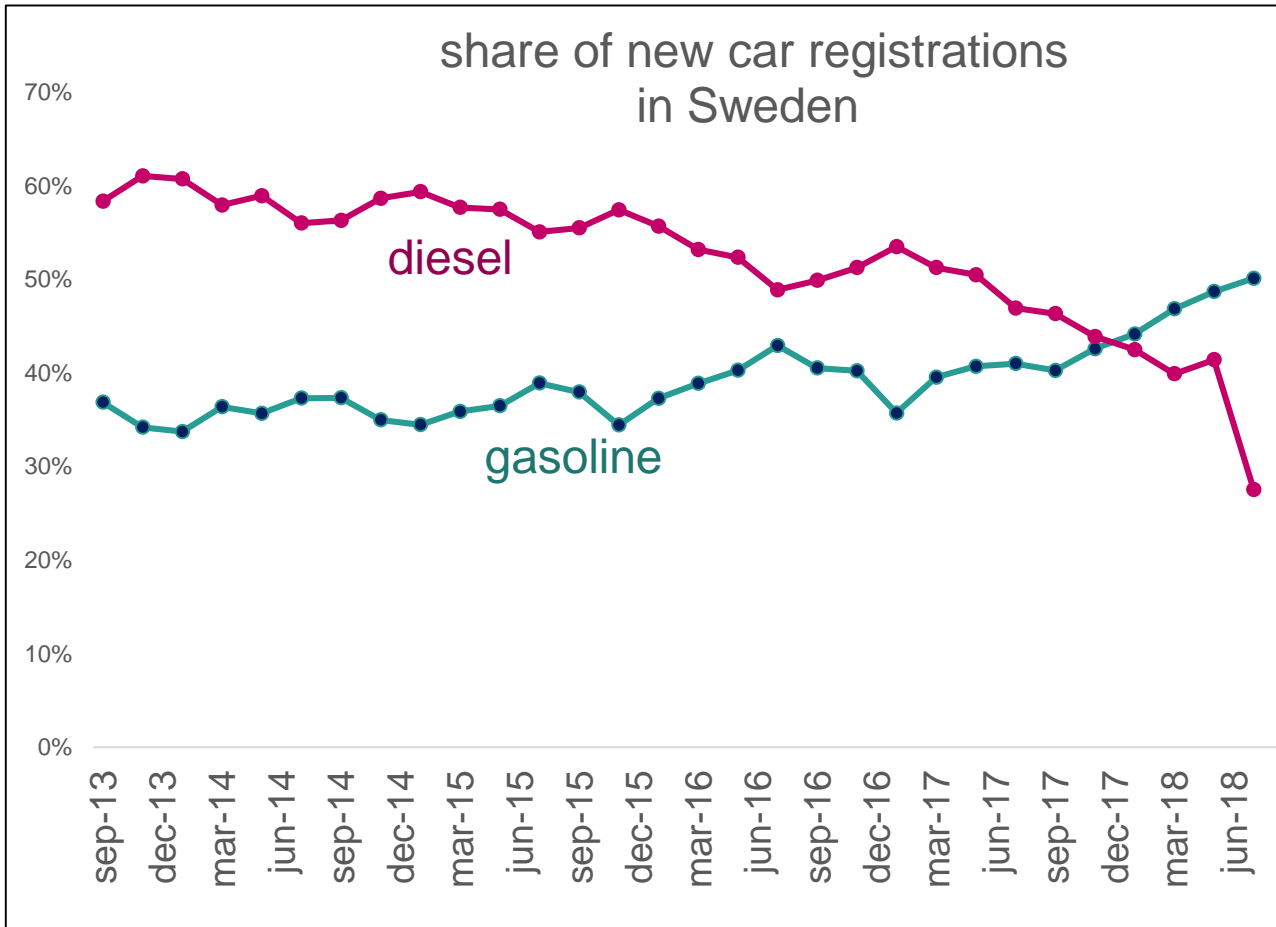
”ready for **diesel ban**:
environmental zones for cars 2022”

**Klart för dieselförbud:
Miljözoner för personbilar 2022**

”diesel ban” communication

=> gasoline cars more popular (new and used)

=> 25+% more CO2/km for same size car



Take away

1. heavy vehicle requirements & enforcement!
2. fleet effect >>> traffic volume effect
3. city's car fleet <<< affected car fleet
4. consider charge vs. ban to address proportionality and equity
5. "diesel ban" communication & uncertainty
=> climate issue

Anne.Bastian@stockholm.se

