



European
Commission



2020
DESTINATIONS
P O R T I S
ECCENTRIC



THE CIVITAS INITIATIVE
IS CO-FINANCED BY THE
EUROPEAN UNION

CIVITAS **LIVING LABS** ON STAGE

CIVITAS **LIVING LABS** ON STAGE

Discover 16 European cities making better living and moving a reality

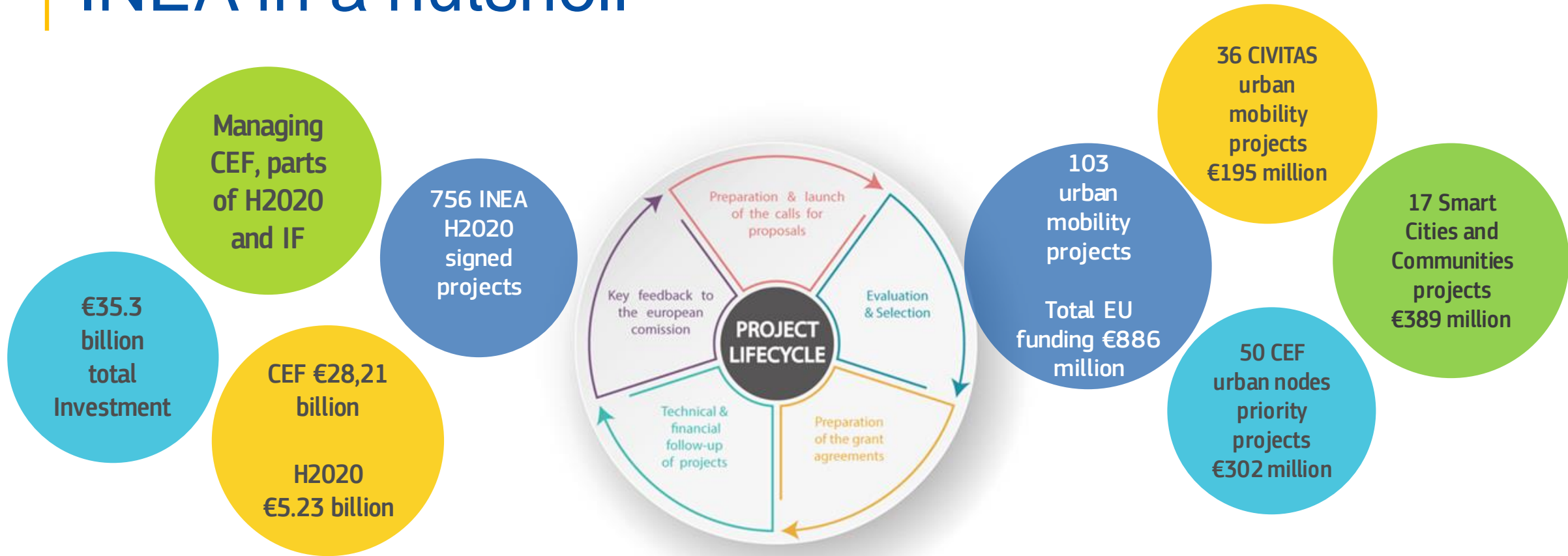
FINAL ONLINE EVENT 6-20 October 2020

**Key aspects of the CIVITAS initiative:
integration in DESTINATIONS, ECCENTRIC and PORTIS living labs**



*Dr. Octavia Stepan
Project manager urban mobility
Transport Research Unit, INEA-EC*

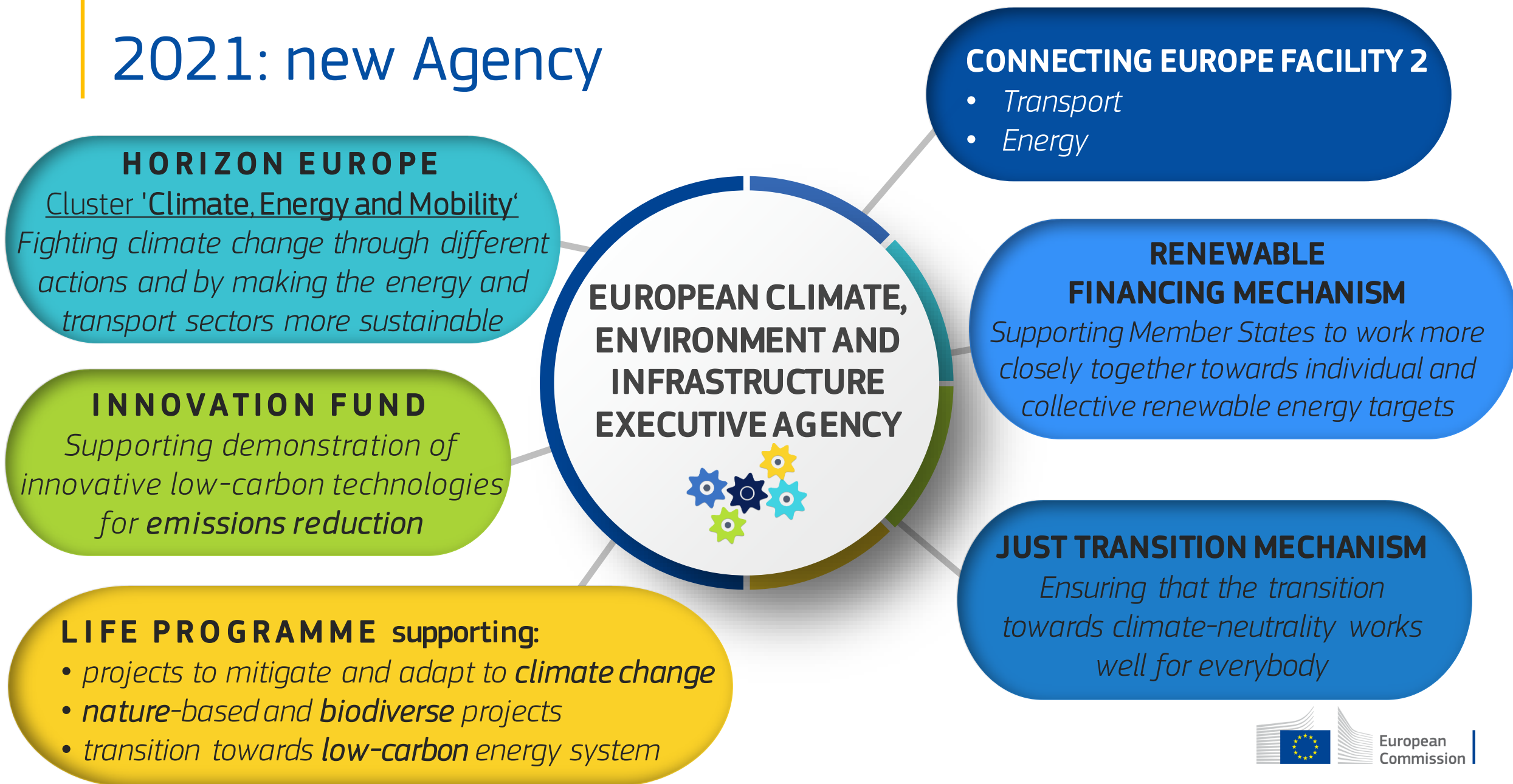
INEA in a nutshell



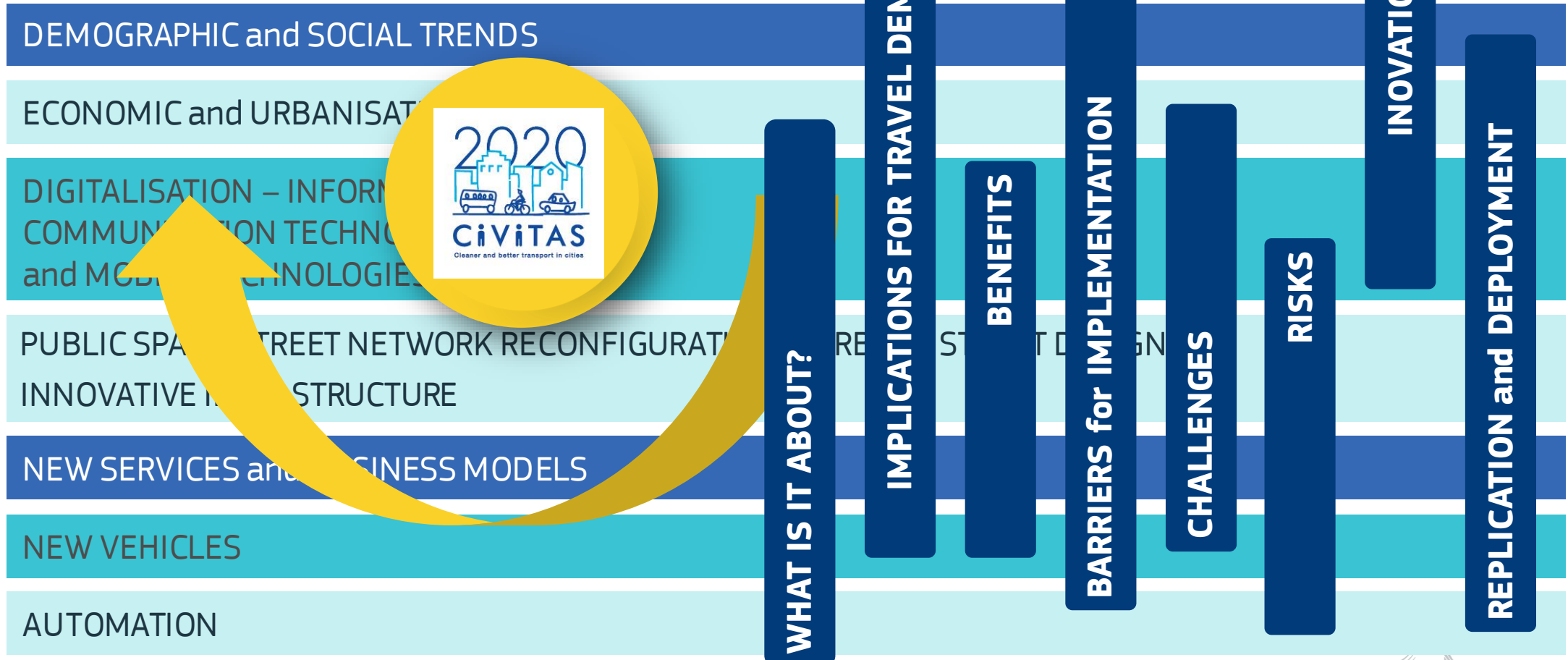
DG RTD | DG MOVE | DG ENER | DG CLIMA | DG CNCT



2021: new Agency



socio-economic trends and technologies in urban mobility



THE CIVITAS INITIATIVE PROJECTS

Horizon 2020 Smart, green and integrated transport
CIVITAS INITIATIVE

Innovation Actions

Living-Labs - demonstration projects:
DESTINATIONS – PORTIS –
ECCENTRIC

Research and Innovation Actions

- Clusters of projects:
- Tackling urban congestion
 - Transport planning and modelling
 - Active modes
 - Co-creation at neighbourhood level
 - Electric mobility in cities

SOLUTIONS and MEASURES

collective passenger transport

urban freight and logistics

transport telematics

Integrated planning

clean fuels and vehicles

car independent lifestyles

new mobility services

travel demand management

safety and security

POLICY OBJECTIVES and TARGETS

White Paper on Transport (2011)

- Halve the use of conventionally fuelled cars in urban areas by 2030, phase them out by 2050
- Achieve CO2-free city logistics in major urban centres by 2030
- By 2050, move close to zero fatalities in road transport + halve casualties by 2020

Urban Mobility Package (2013)

- stronger cooperation between different policy levels to deliver on sustainable urban mobility
- UMPs; emphasis on multimodal solutions

European Strategy for Low-Emission Mobility (2016)

- By 2050 Transport GHG must be 60% lower than in 1990



INTEGRATION

- the CIVITAS demo projects solutions/measures are complex
- complementary and reinforcing packages of measures within the living-lab

CAPACITY BUILDING - COOPERATION MODELS - NEW INSTITUTIONAL PARTNERSHIPS

- Offers local practitioners opportunities to learn about innovative transport and mobility solutions first hand



INNOVATION

- the innovation level of the CIVITAS solutions is often determined by the urban context, the local values and culture



REPLICATION

- cases of direct replication of CIVITAS measures/solutions are rare and require adaptation to the urban context



We would like to hear about

- Your projects' **Exploitation Plans**
- The **innovativeness** of each solution/technology resulting from your project, a solution could also have the form of a measure, a service or a tool
- How you plan to **further replicate, scale-up, rollout** the innovative solutions/measures, beyond the end of your CIVITAS living-lab and the end of the project
- **The barriers, obstacles or challenges encountered** when moving towards the replication or scale-up, rollout of your project's innovative solutions/measures
- **The necessary conditions/pre-requisites that should be in place** for a successful replication, scale-up or rollout

For more information



inea@ec.europa.eu



<http://ec.europa.eu/inea/en>



[@inea_eu](https://twitter.com/inea_eu)



Look for **INEA!**

Thank you!