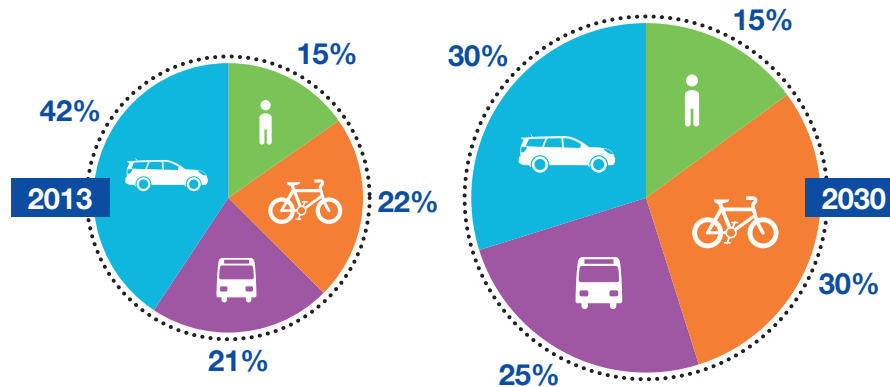


How to rebalance modal share by 2030

“ By developing **walking, cycling and public spaces** to link the city together, the city of **Malmö** plans to **reduce** car modal share by 12% by 2030



Sources

Developing walking, cycling and public spaces to link the city together. Case study in Malmö - P. Håkansson and T. Starck
www.epomm.eu/tems/result_city.phtml?city=46&list=1