



# INTEGRATING SUSTAINABLE URBAN MOBILITY PLAN - SUMP

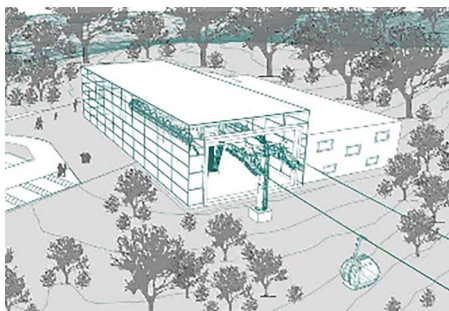


Since the recent acquisition of the Old Port areas has totally changed the city framework, the city of Trieste needs to develop a SUMP to ensure the incorporation of the Old Port area into the overall mobility strategy of the urban city centre and the New Port.

The Old Port of Trieste is a unique area to be protected through big and innovative choices: a total rethinking of urban mobility is needed, especially in the port-city relations. The SUMP provides actions to improve sustainable mobility all over the metropolitan area of Trieste, from automatic climbing systems and elevators to improve accessibility, to modal split interconnections located in the outer ring of the city.

## CONTEXT & CHALLENGES

At the time before CIVITAS PORTIS, Trieste did not have a SUMP established according to the EU guidelines, but an Urban Traffic Master Plan approved by the City Council in 2013. The transfer by the Italian government of the Old Port areas to the City has represented a good opportunity for Trieste to renewal of the whole area surrounding the Old Port, which has been abandoned for many years, and consequently, for the integration of the city and the Port also from a sustainable mobility perspective. The SUMP has



been developed thanks to an integrate and participatory approach adopted by the City of Trieste, which has entailed the consultation and coordination of citizens and stakeholders.

Among the aspects that characterize the SUMP there is the assumption of a scale of values between the different components of mobility which encourages the less dominant users: pedestrian and bicycle mobility in the first place, public transport and, finally, private traffic and parking. Moreover, in this plan, great attention has been paid to the needs of certain groups, in particular the disabled persons, ensuring accessibility to the pedestrian areas for the vehicles serving the disables, taxis and emergency vehicles.

The main transport-related issue included in the SUMP is a new strategy to enhance the quality, security, accessibility of public transport services through and within the urban and port areas.

The SUMP analyzes also the existing road networks and improves the existing road infrastructures, defining new solutions to im-

prove efficiency of urban logistics, including freight delivery.

Particular attention is paid to non-motorised transport, such as the implementation of cycling and pedestrian paths, and to inter-modality, the integration of different transport modes in order to reach a higher level of attractiveness of more sustainable mobility systems (bike-bus-boat).

Thanks to this measure, the SUMP of Trieste includes the analysis of an innovative transport mode: a cable car system which should connect the city centre with the Old Port area and eventually climb up the hill towards the upper part of Trieste. The innovative systems acts as a support of sustainable mobility and



## CONTEXT & CHALLENGES

as a touristic attraction: on the first side, the cable car can help in the interconnection among cars, buses and pedestrians paths (reducing the impact of private transport modes in the city); on the second side, the view over the sea, the hills and the city that it can provide is unique in Europe.

Furthermore, a new bike sharing systems (BiTS), which was launched in February 2020, is now implemented with two new bicycle parking stations within the Old Port areas: it is the first extension of the bike sharing system up to 12 bicycle parking stations that immediately met a great interest from the citizens (more than 8.700 people registered for more 65.000 trips).



## RESULTS - FINDINGS - LESSONS LEARNT



- **Result 1:** The integrated and participatory approach adopted by the City of Trieste to develop the SUMP has proved to be an effective method to plan sustainable mobility solutions, thanks to the involvement of technical stakeholders and to the consultations of citizens.
- **Result 2:** The SUMP for the city of Trieste has been developed.

- **Lesson 1:** Sustainable urban mobility advancements have been planned, especially for the integration of the city with the Old Port Areas.
- **Lesson 2:** Some barriers have been encountered due to Italian legislative requirements.

## CONTACT

Giulio Bernetti / Municipality of Trieste  
Email: [giulio.bernetti@comune.trieste.it](mailto:giulio.bernetti@comune.trieste.it)  
Website: [www.comune.trieste.it/portis](http://www.comune.trieste.it/portis)

More info about CIVITAS PORTIS can be found on our website <http://civitas.eu/portis>

**Imprint:** All content and pictures were provided by the CIVITAS PORTIS project partners of Trieste. The content of this city factsheet does not reflect the official opinion of the European Union. Responsibility for the information and views expressed therein lies entirely with the authors.