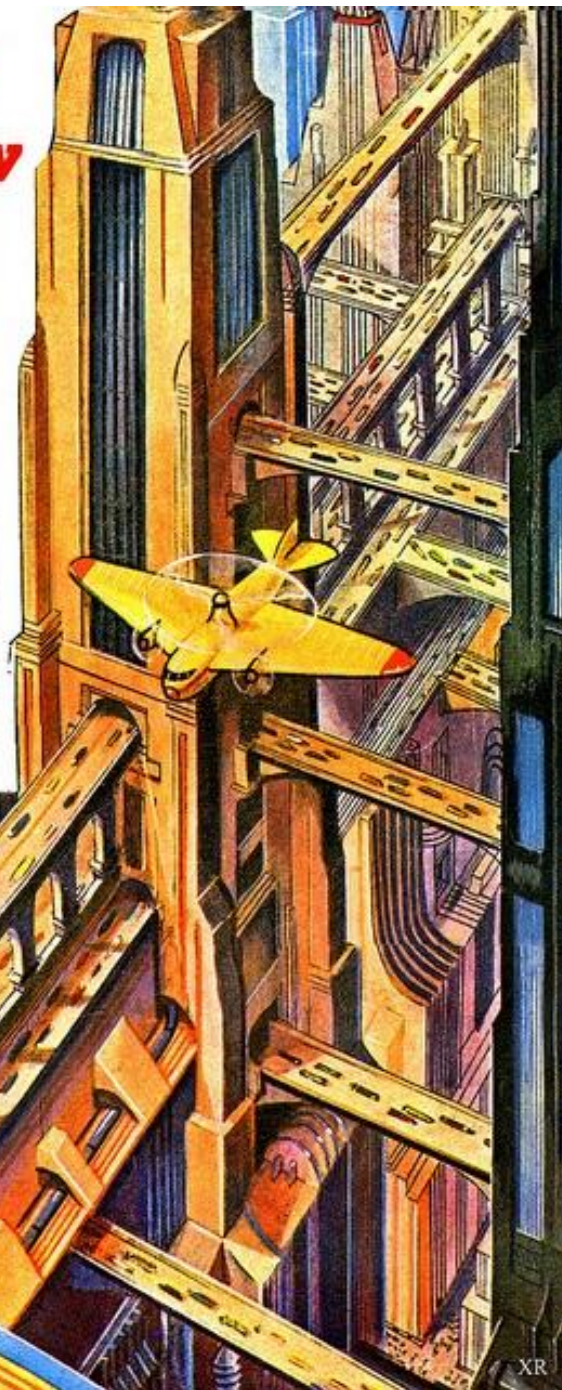


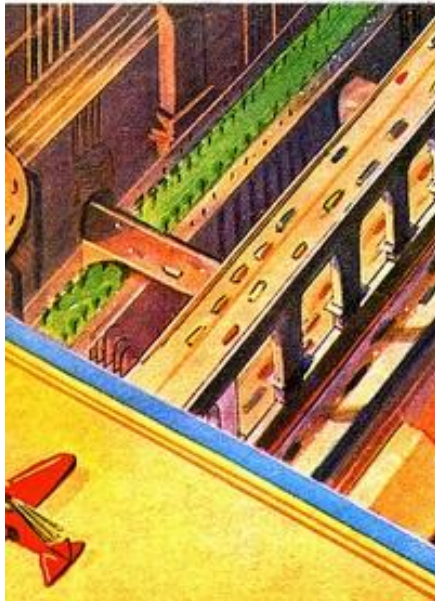
Cities of Tomorrow

The city of tomorrow, engineers say, will tend first to vastness; gigantic buildings connected by wide, suspended roadways on which traffic will speed at unheard of rates. This is the city the artist has pictured here. Traffic handled in huge underground tunnels, aerial ways, and in the air itself. Helicopter planes, capable of maneuvering about between buildings and roof-top airports, will take the place of the ground taxi. Each building will be virtually a city in itself, completely self-sustaining, receiving its supplies from great merchandise ways far below the ground. Dwellers and workers in these buildings may go weeks without setting foot on the ground, or the ground-level. In this city smoke will be eliminated, noise will be conquered, and impurity will be eliminated from the air. Many persons will live in the healthy atmosphere of the building tops, while others will commute to far distant residential towns, or country homes.

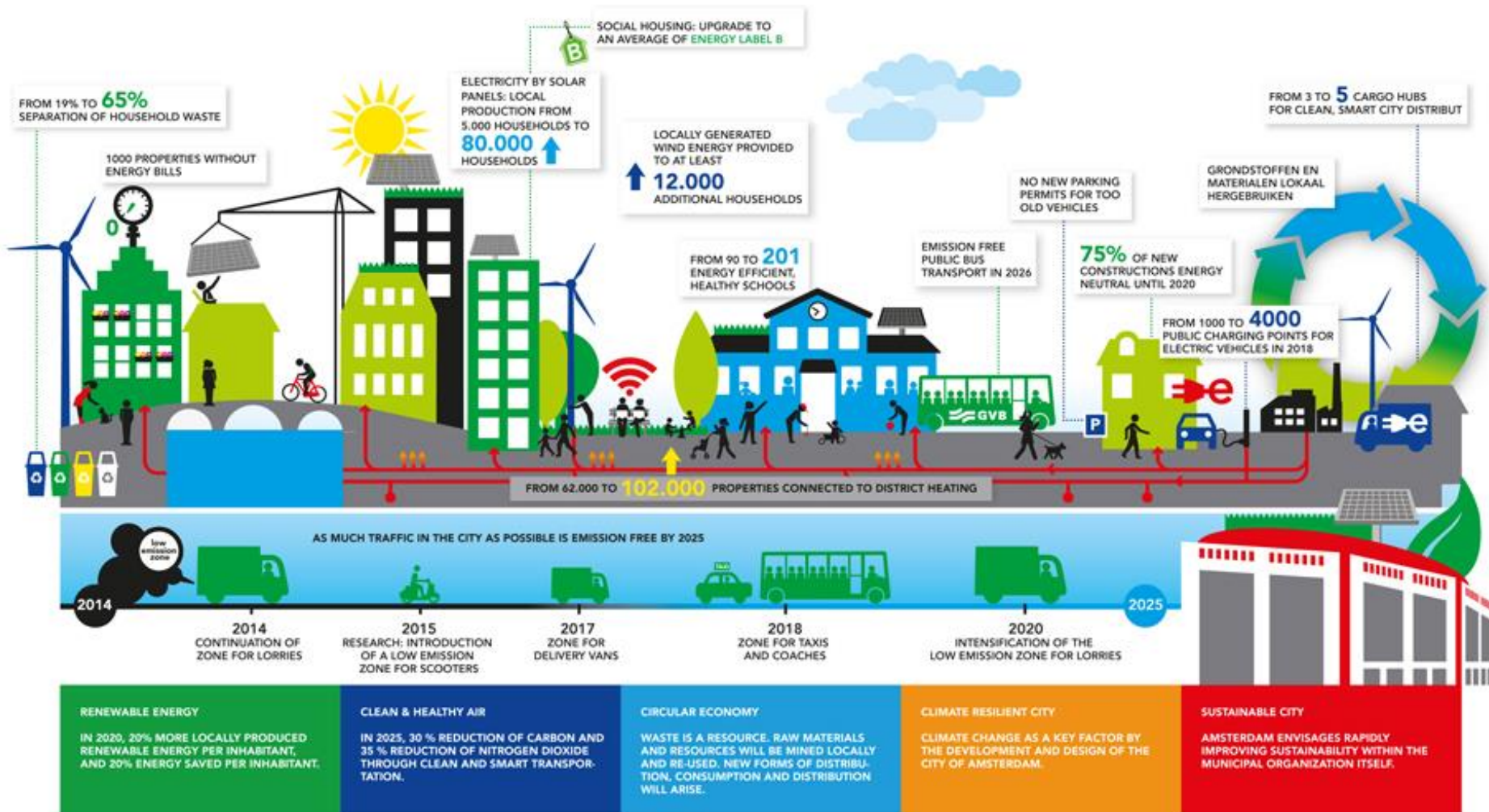
Copyright Amazing Stories, 1939.

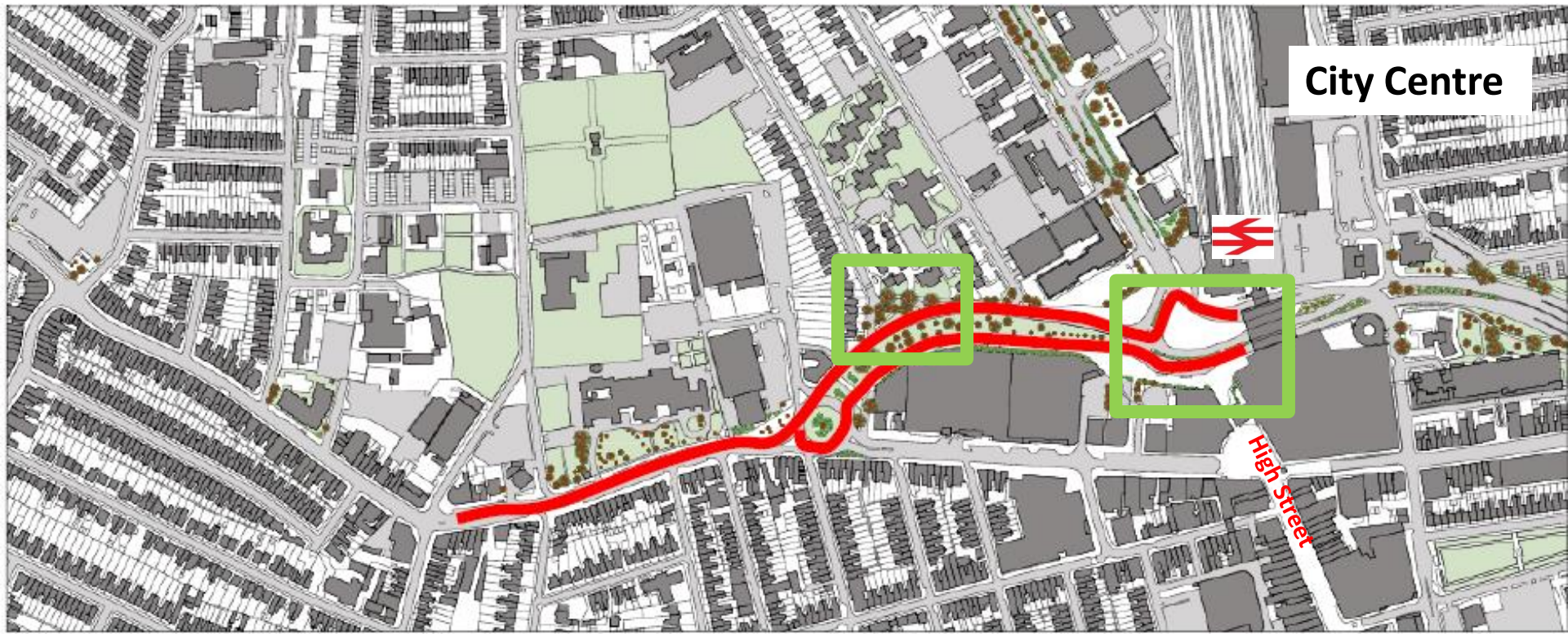


City Planning Aspirations 1939

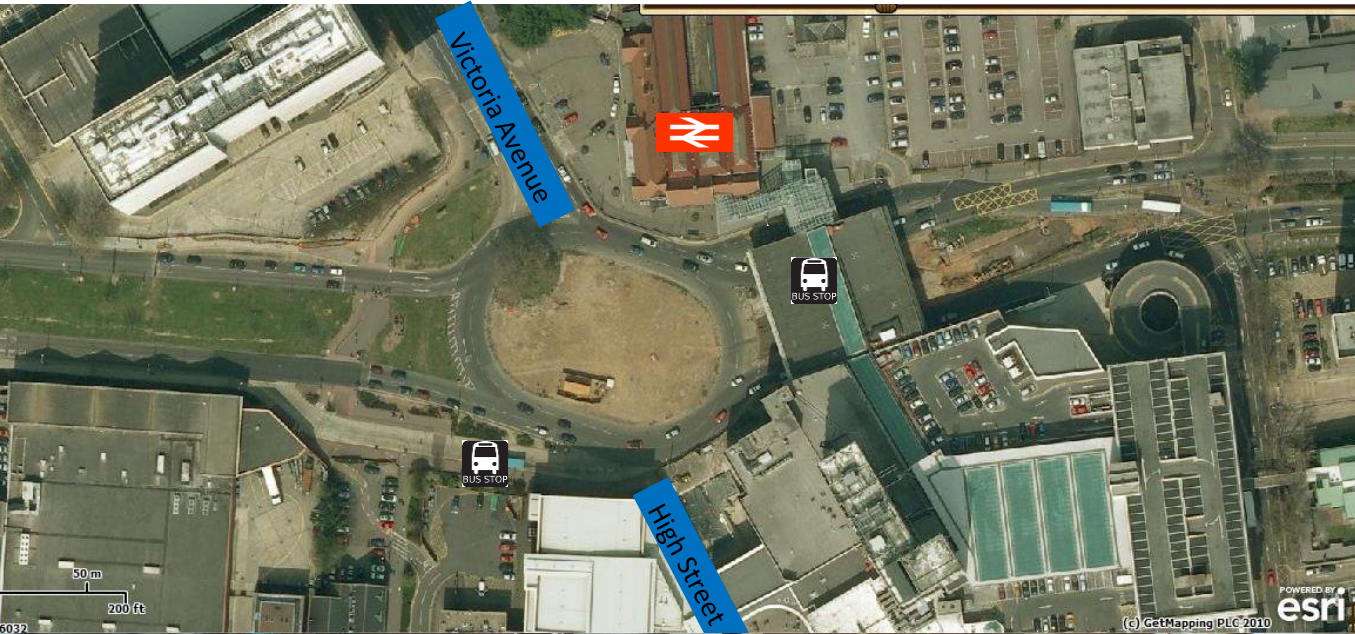


City Planning Aspirations 2015





Victoria Roundabout

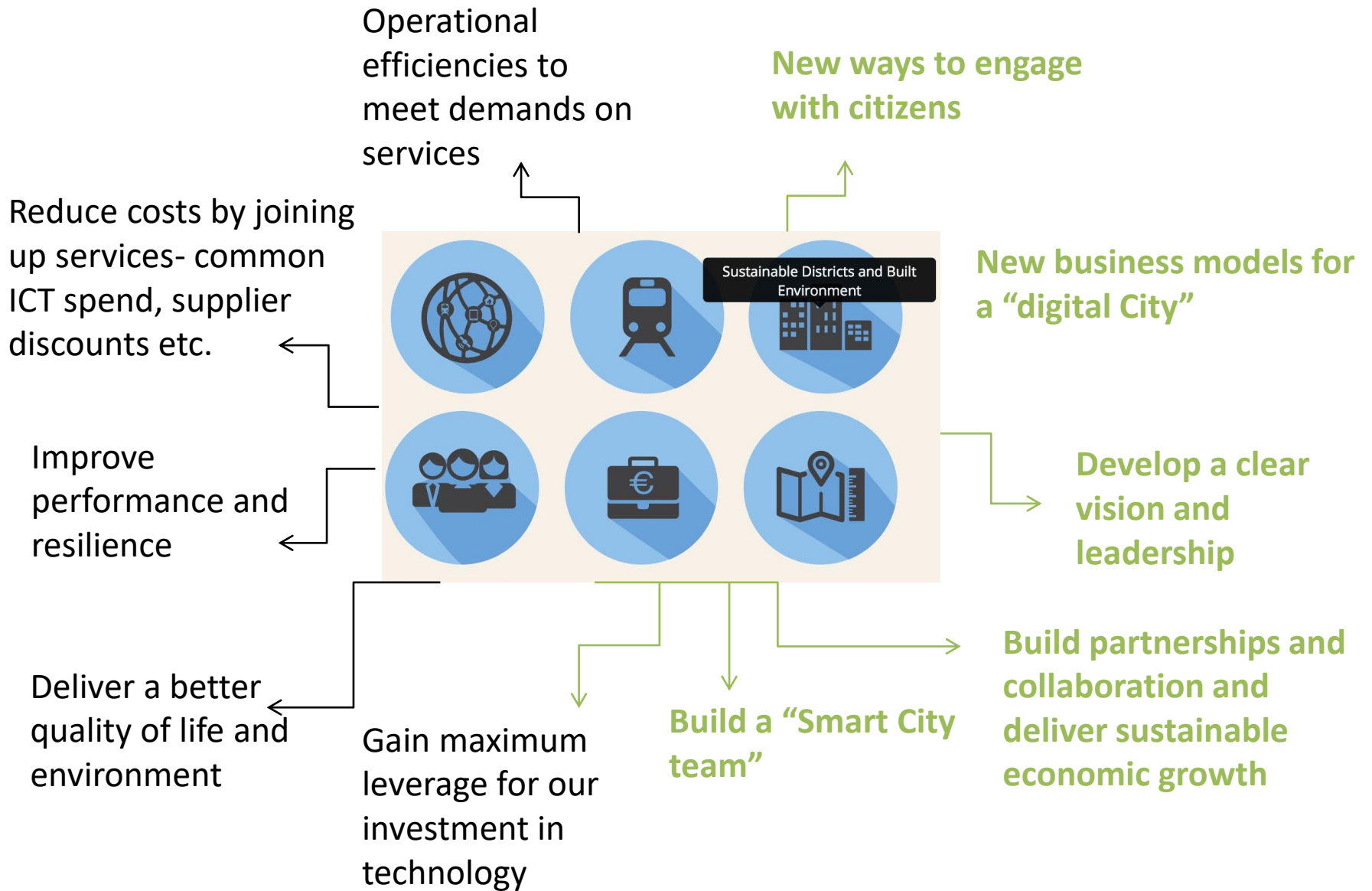


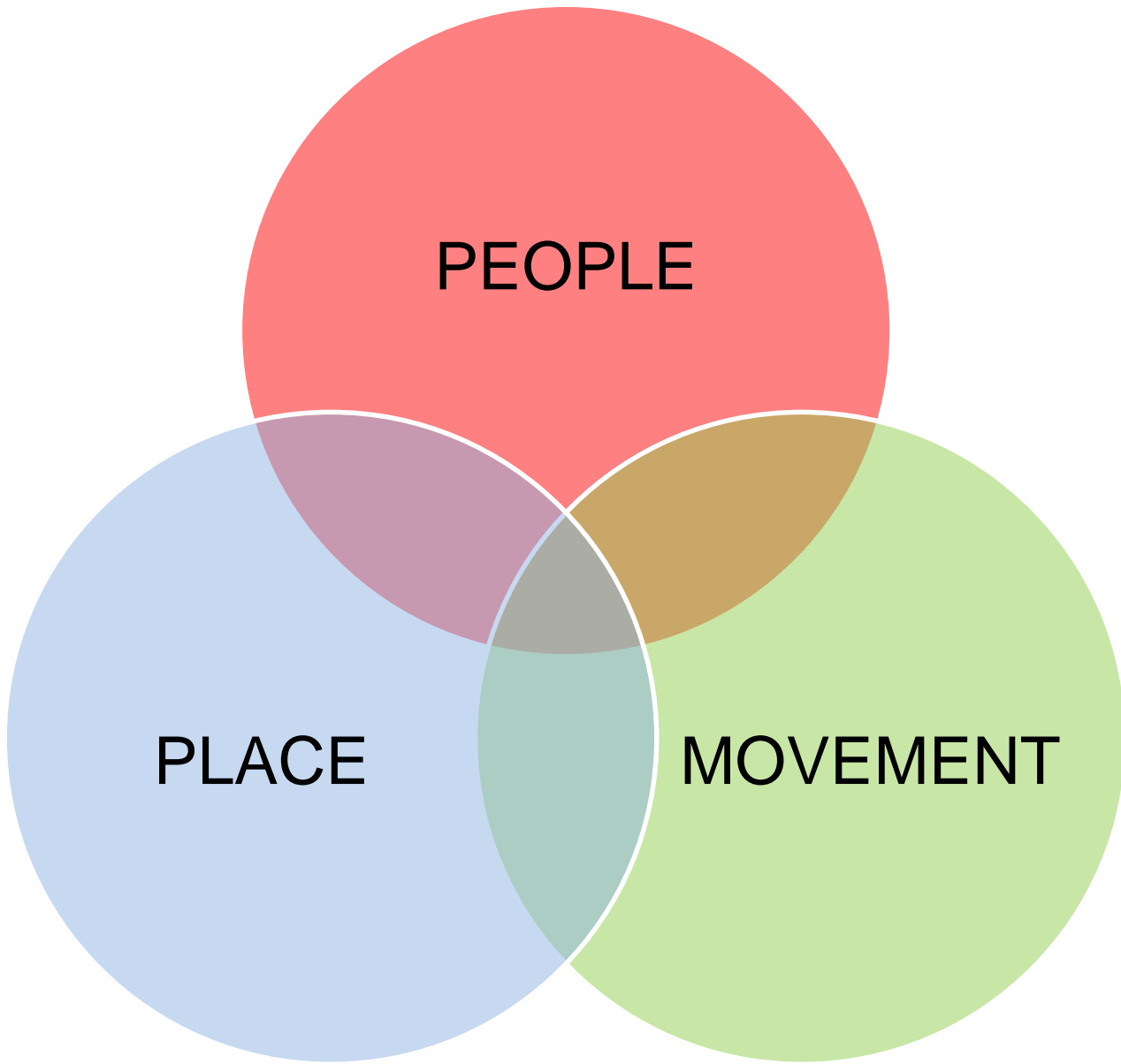
Up to 2011



April 2011

Smart Cities Diagram





PEOPLE

PLACE

MOVEMENT

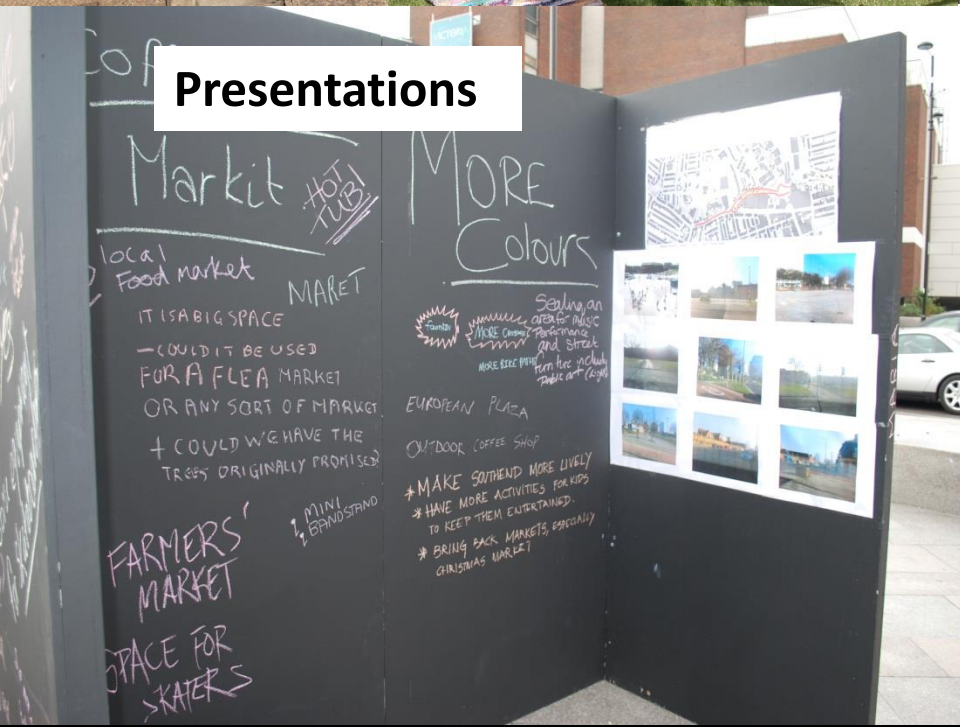
Events



Workshops



Presentations



Trials



Events



- Connecting with local groups + social media
- Gaining local champions and volunteers
- Introducing the concept of community led design process
- Encouraging sustainable transport
- Media attention

Workshops



- Identifying local issues and aspirations
- Useful to be on site
- Returning participants/ flow of people
- Capturing ideas

Presentations



POCKET PLACES and IDEAS IN MOTION:
Working for a better Southend

Photo: Community Hub. The photos illustrate the various ways in which the community is engaged in the project. The photos show people working together to improve the area, and the text below explains the project's goals and progress.

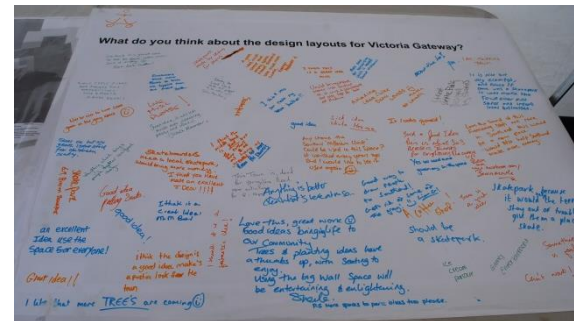
Community Newsletter Issue 2 - 01 July 2014

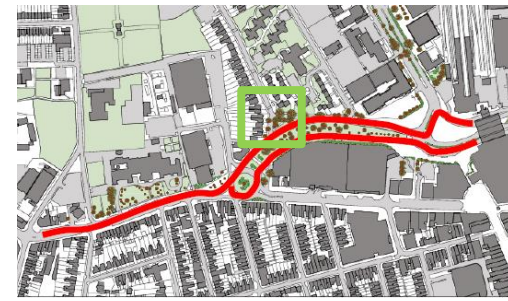
As you'll have noticed, work is well underway on the Pocket Places and Queensway-London Road scheme. This is our second community newsletter, designed to keep you updated while work is being carried out on site.

As we said in our first newsletter, the scheme includes the addition of more trees, green areas and seating at Victoria Gateway and the installation of new lighting to create a more welcoming experience and provide opportunities for community events. Over the past few weeks, work at the Gateway has focused on installing underground ducting for the new lighting fixtures. Once this was finished, the contractors restored the pavement to its original state so you could use it as normal while they worked on other parts of the scheme. From **Friday 1 August** the construction team will be back at the Gateway to install corduroy paving along the edges of the central plaza to assist blind and partially sighted users.

As part of the wider scheme, some extra planting, benches and cycle parking will be added along London Road, as well as widening the pavement in some of the narrower areas between the roundabout and Avenue Road/North Road. So we can widen the pavement, and to improve the drainage system, the team has already been working to realign the kerb of the central and splitter islands at the Queensway/London Road roundabout. They will now start work on the pavement south of the roundabout, between Princess Street and Ashburnham Road, realigning the kerb and de-cluttering the pavement. The roundabout will continue to be operational, with the outer lane closed off to allow the team to work safely.

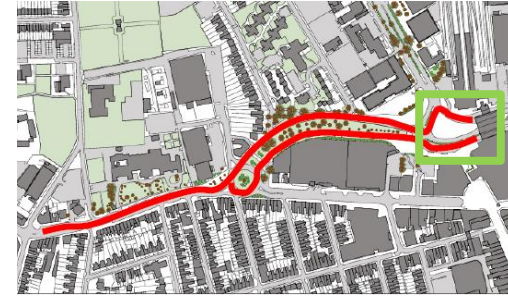
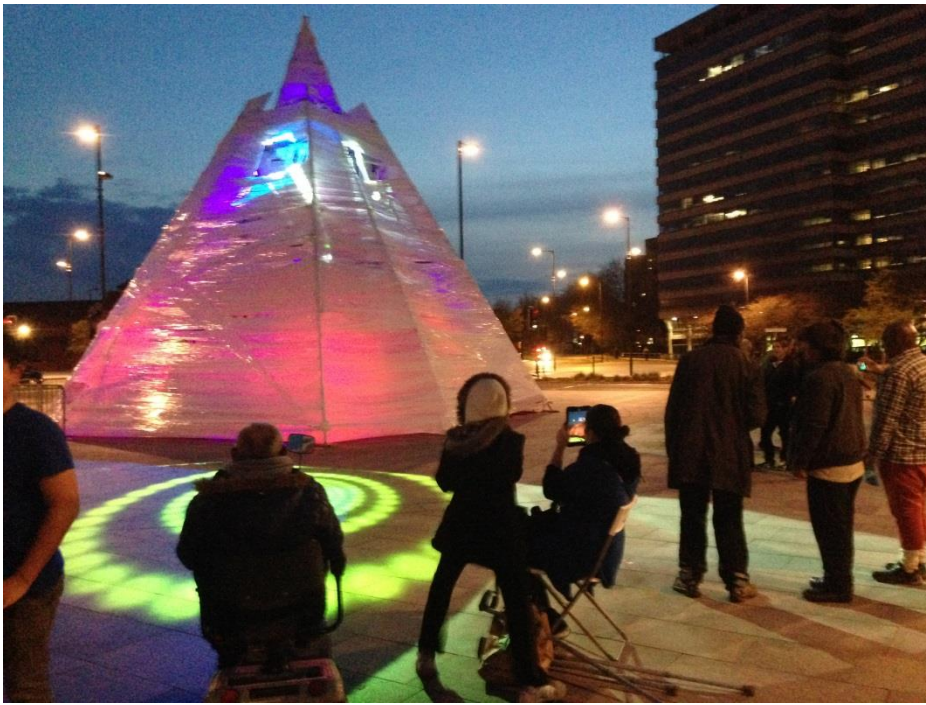
They have also been installing new kerbs, block paving the parking bays and carrying out drainage works along the north side of London Road. With this now completed, they will start work on the south side from **Monday 4 August**.



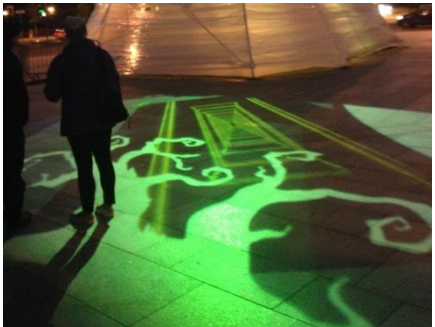


Trials





Trials



Trials



Implementation following the Trial

08:30



14:00



17:00

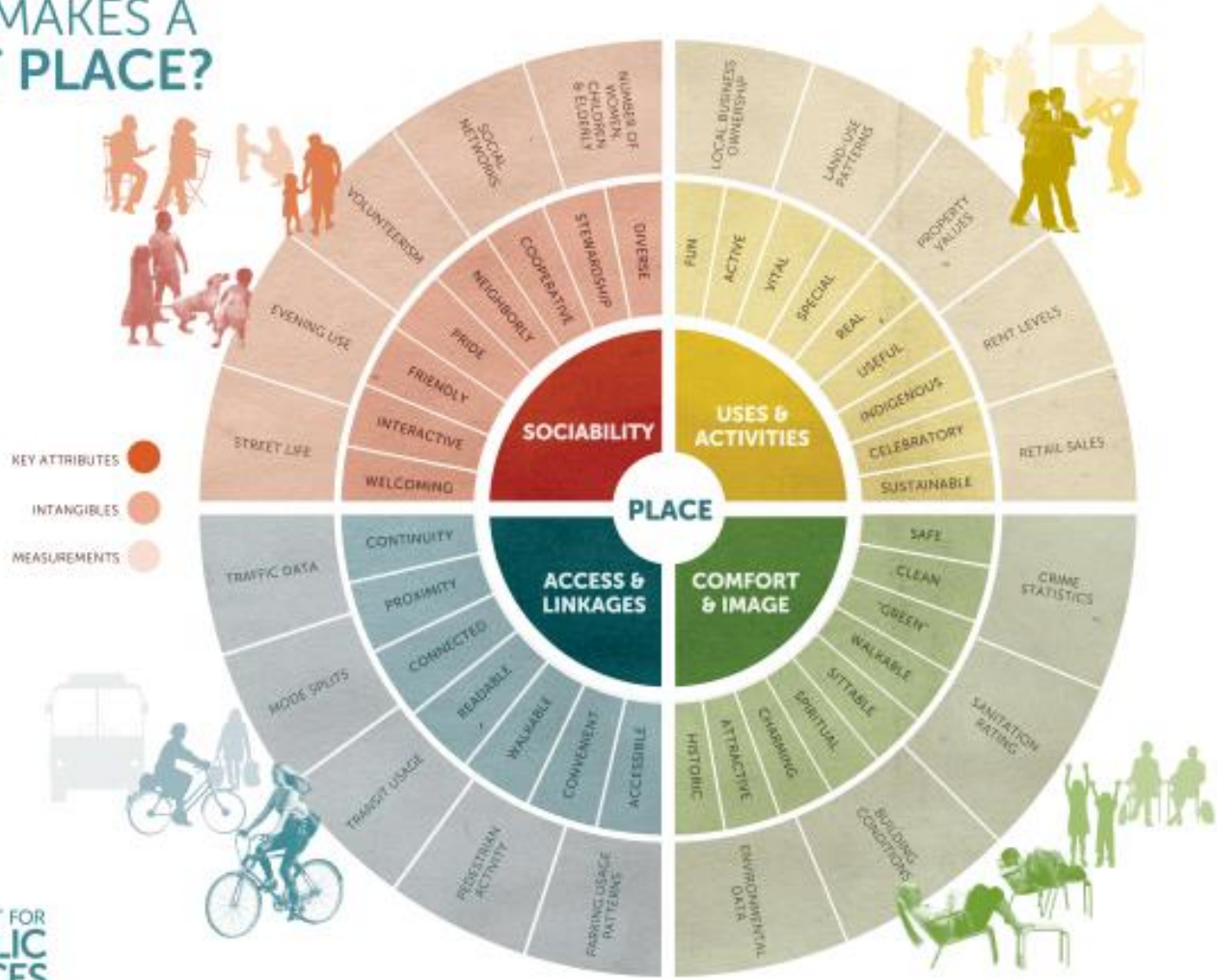




Implementation following the Trial



WHAT MAKES A GREAT PLACE?







York Road, Southend-on-Sea



Methleys, Leeds



Gateway feature



Surface materials



Social space



Activity area



Image



Scale and character

