

Guidelines to Preparing Sustainable Urban Mobility Plans

CiViTAS Forum – Annual Conference,
Funchal, 17-19 October 2011

Siegfried Rupprecht, Rupprecht Consult

Do we need urban mobility planning?

There are some advantages to work **without overall planning**

- It is fast and cheap
- Investors like it
- Decision-makers get the image of “enablers”



But without planning?

- Powerful lobbies will have more influence on decisions
- Alternative solutions to a problem are not transparent
- Some groups of citizens are not asked
- Built elements do not fit together
- Politicians try only to attract investors



SUSTAINABLE
URBAN MOBILITY
PLANS



www.TURKEY.com

Planning for People

CiViTAS Forum 2011

RUPPRECHT CONSULT
Forschung & Beratung GmbH

What is sustainable urban mobility planning up against?

A few examples

"I can't support bike lanes. How many people are riding outside today? We don't live in Florida. We don't have 12 months a year to ride on our bikes. A man who, beyond the age of 26, finds himself on a bus can count himself as a failure. And what I compare bike lanes to is swimming with the sharks, sooner or later you are going to get bitten. And every year we have dozens of people that get hit by cars or trucks. Well, no wonder! Roads are built for buses, cars and trucks, not for people on bikes. My heart bleeds for them when someone gets killed, but it is their own fault at the end of the day."

Margaret Thatcher, 1986

Rob Ford, Mayor of Toronto,
speaking to City Council in 2007



on the other hand

“If you plan cities for cars and traffic, you get same old kind of. If you plan for people and places, you get people and places.”

Fred Kent, Project for Public Spaces

and sustainable urban mobility planning?

What does it stand for?

Characteristics of sustainable urban mobility planning



- Active **involvement** of all stakeholders and the engagement of citizens
- Commitment to **sustainability**, i.e. balancing social equity, environmental quality and economic development
- Looking "**beyond the borders**"
 - an integrated approach between policy **sectors**
 - cooperation between **authority** levels
 - coordination across **neighbouring** authorities
- Focus on achieving ambitious, measurable **targets**
- Targeting **cost internalisation** i.e. reviewing transport costs and benefits for society
- Including all steps of the **life cycle** of policy making and implementation



Sustainable urban mobility planning stands for

being able to plan for the future of your city
with its people as the focus.

It means
“Planning for People”.

What's the core of SUMP?

- An effective approach to work towards a **planning practice and culture** that aims at truly sustainable urban transport and mobility patterns.
- It means planning for the future of your city with its people as the focus. It means “**Planning for People**”.
- Sustainable urban mobility planning is about **moving in the right direction**. It should **grow from existing practices** in European cities that already apply many of the aspects covered by an SUMP.



SUMP – a concept promoted by the EU



Sustainable Urban Mobility Plans have gained increased recognition and importance at European level

- Action Plan on Urban Mobility
- European Council of Ministers
- 2011 Transport White Paper
 - Examining the **possibility of a mandatory approach** for cities of certain size, according to national standards based on EU guidelines.
 - Link **regional development and cohesion funds** to cities and regions that have submitted a current, independently validated Urban Mobility Performance and Sustainability Audit certificate.



EltisPlus – the reference project for SUMP



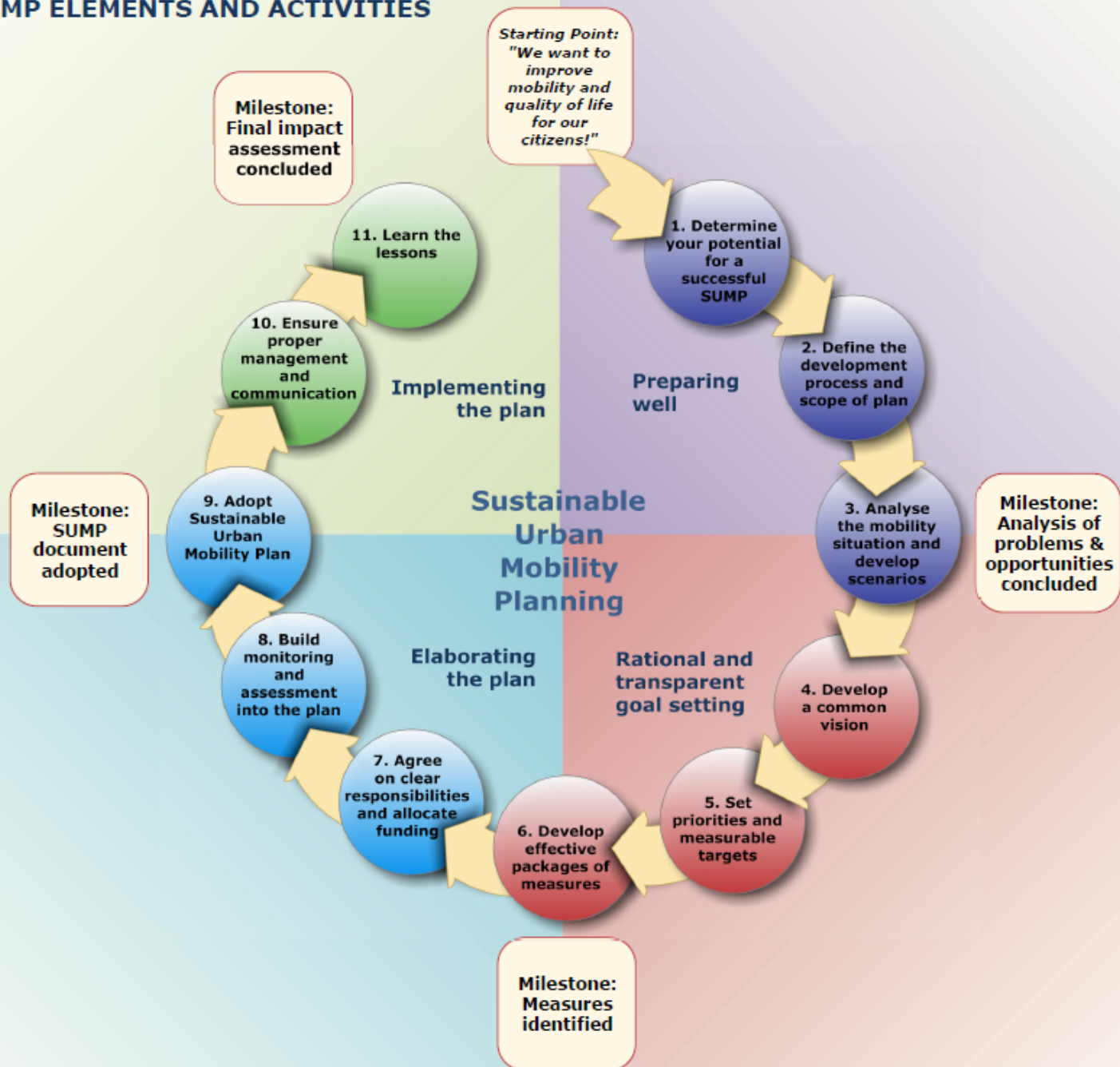
- Knowledge **consolidation**, **awareness** raising and **training** on sustainable urban mobility plans in 31 European countries
 - 27 EU Member States + Croatia, Iceland, Liechtenstein and Norway
 - 13 partner consortium
 - May 2010 – April 2013
 - SUMP budget of approx. €750,000
 - Service contract granted by the Executive Agency for Competitiveness and Innovation
 - SUMP-related work is co-ordinated by Rupprecht Consult, Germany (under overall “EltisPlus” co-ordination by FGM AMOR, Austria)
- Based on Action Plan on Urban Mobility (2009):
 - Aim: To accelerate the large scale uptake of SUMPs by local and regional authorities
 - By means of:
 - Guidelines and recommendations
 - Training material and training events
 - Awareness raising, dissemination and promotion
- Internet: www.mobilityplans.eu

- Methodology
 - Desk research
 - User needs assessment, including
 - 49 interviews with stakeholders from 26 countries
 - Online survey
 - Expert consultations
 - Four expert workshops with 54 experts from 19 countries
- State-of-the-Art Report of SUMP in Europe
- Guidelines on the development and implementation of SUMP

The SUMP cycle

- **A full SUMP cycle includes four main phases:**
 - I: Preparing well for the planning process
 - II: Rational and transparent goal setting
 - III: Elaborating the plan
 - IV: Implementing the plan
- **SUMP Guidelines developed in ELTISplus:**
11 Elements (= main steps) and **32 Activities** (= detailing specific tasks)
- **SUMP elements and activities** provide a logical rather than a sequential structure – obvious timing requirements, but process resembles **cycle of activities**, partially running in parallel
- Graphical overview simplified for communication purposes

SUMP ELEMENTS AND ACTIVITIES



Phase I: Preparing well

Underlying motivation / starting point:

“We want to improve mobility and quality of life for our citizens!”

→ **Commitment to sustainability is crucial!**

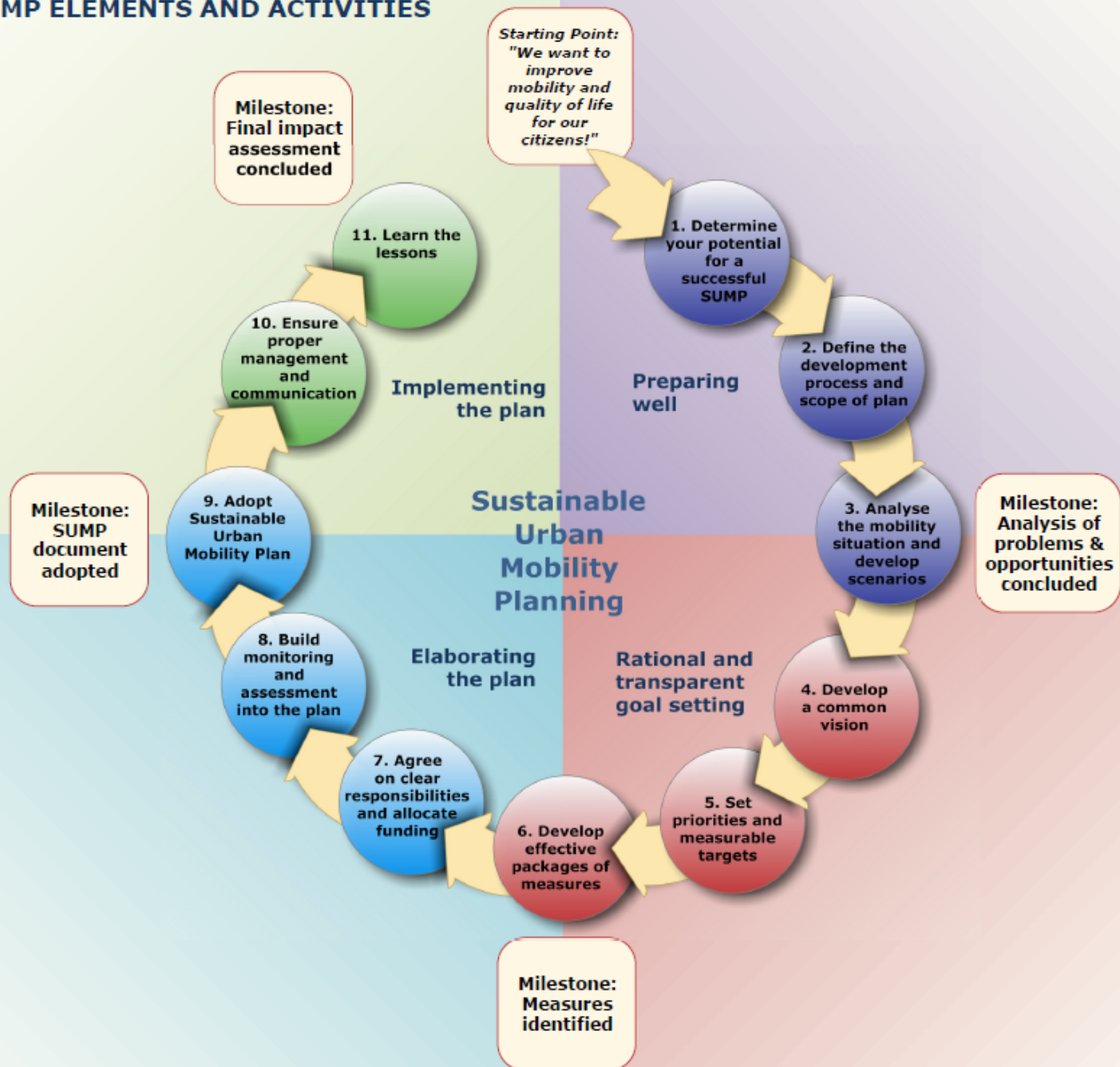
1. Determine...
2. Define c...
3. Analyse...

Milestone:



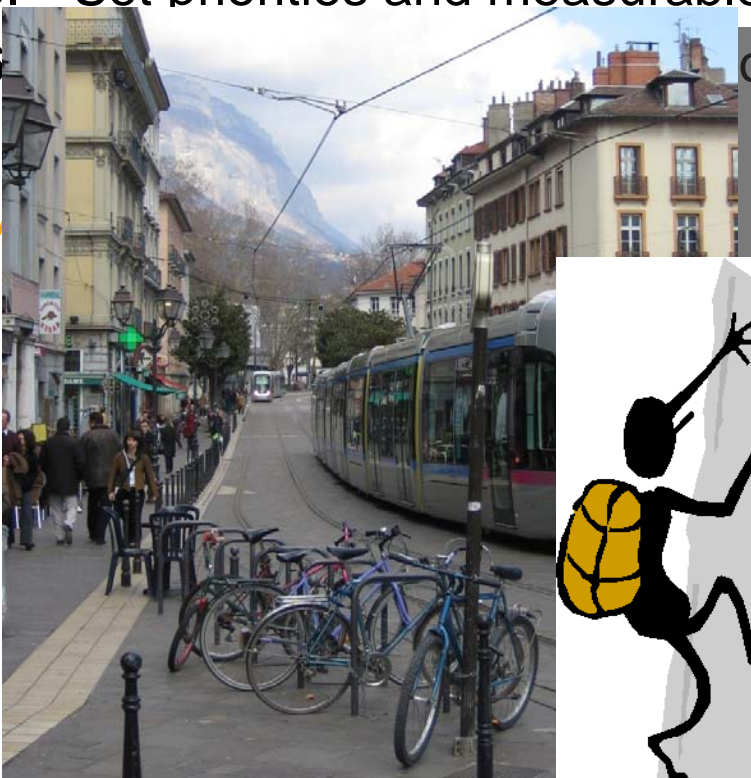
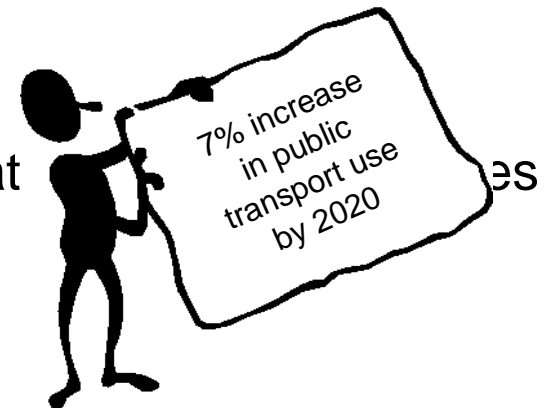
ous,
involved

SUMP ELEMENTS AND ACTIVITIES

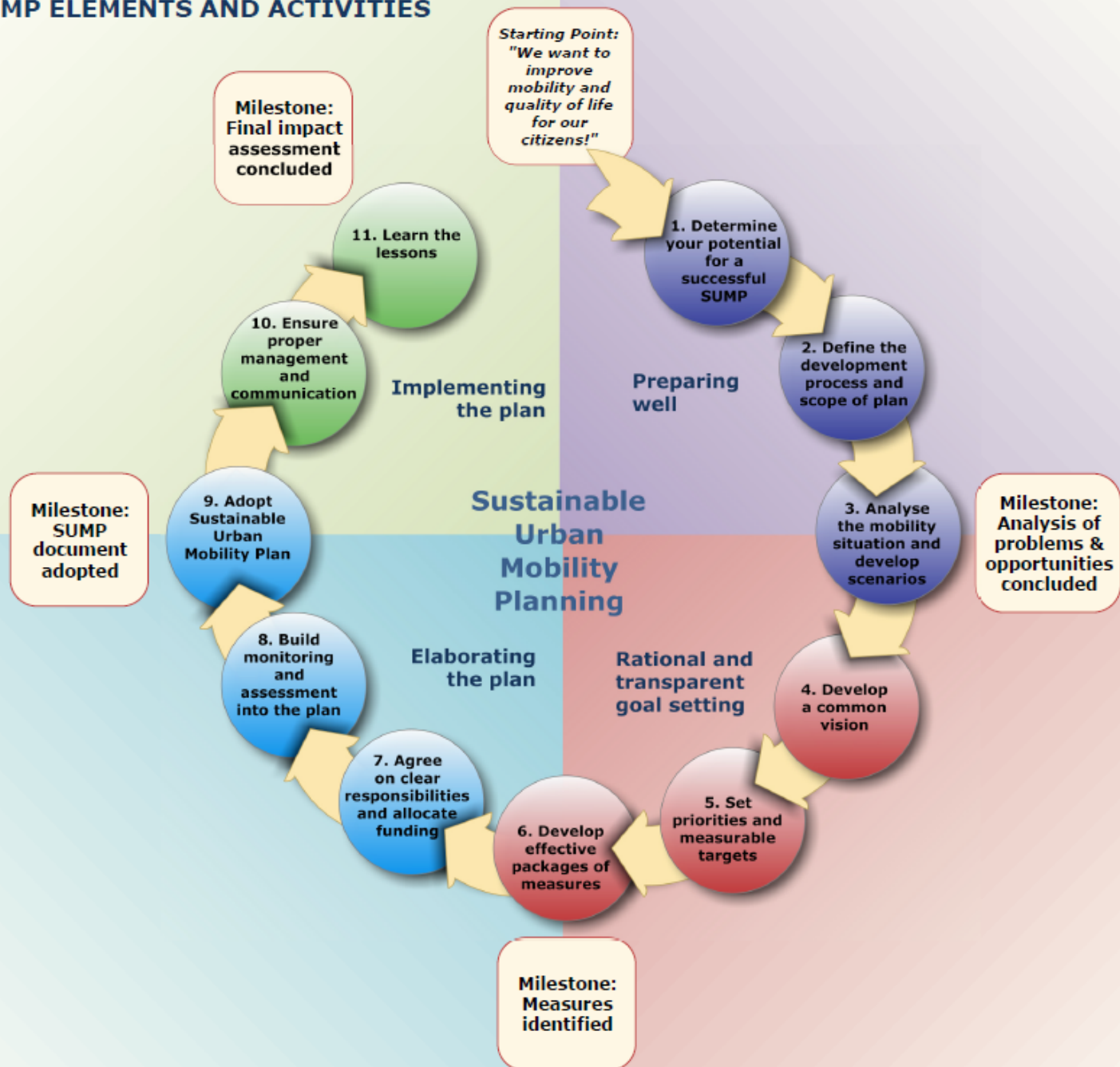


Phase II: Rational and transparent goal setting

4. Develop a common vision of mobility and beyond (your city in 20 years?)
5. Set priorities and measurable targets
6. of measures that



SUMP ELEMENTS AND ACTIVITIES



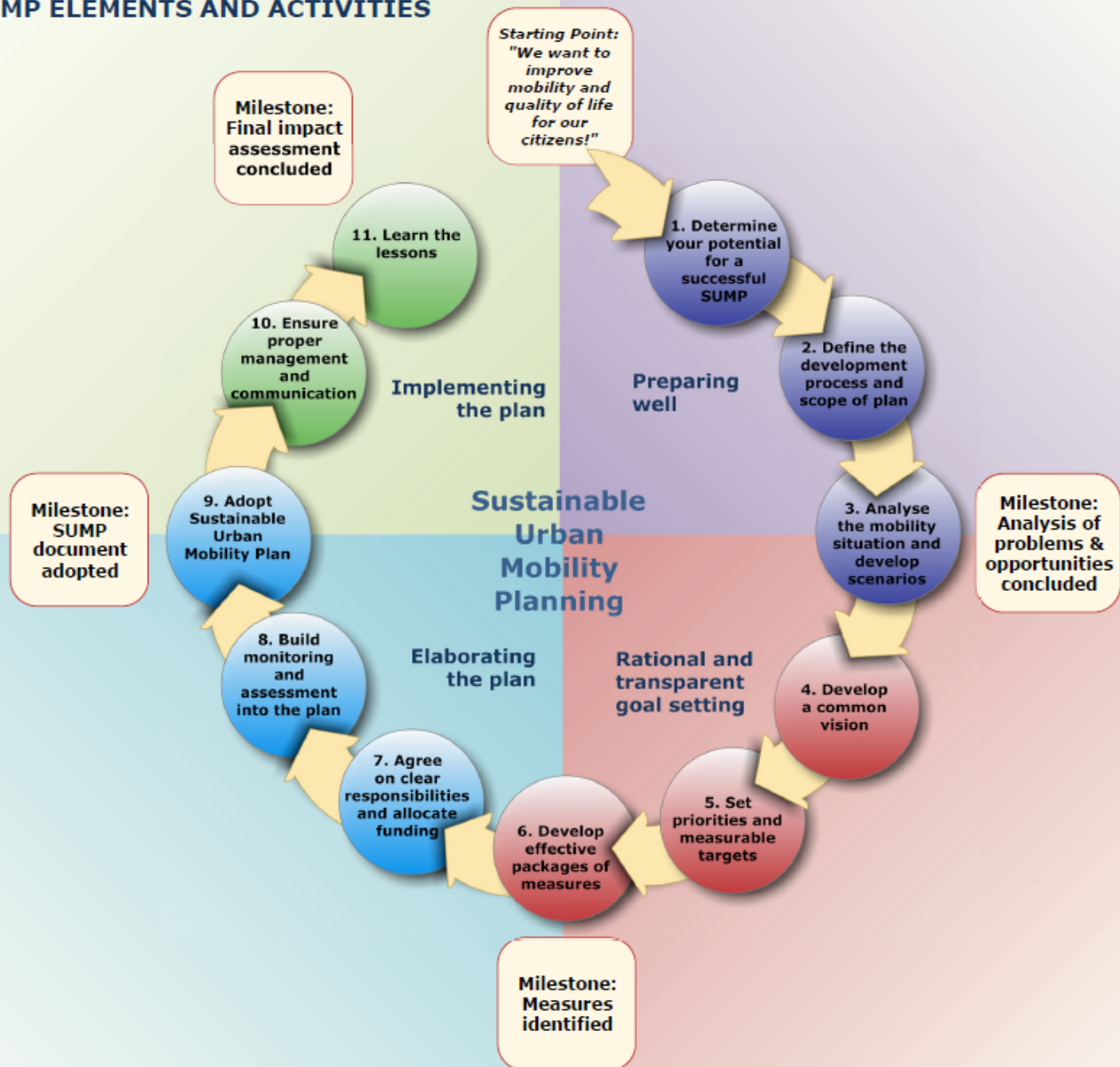
Phase III: Elaborating the plan

7. Agree clear responsibilities and allocate funding
8. Build monitoring and evaluation into the plan
9. Adopt the plan and communicate results

Milestone: SUMP adopt



SUMP ELEMENTS AND ACTIVITIES



Phase IV: Implementing the plan

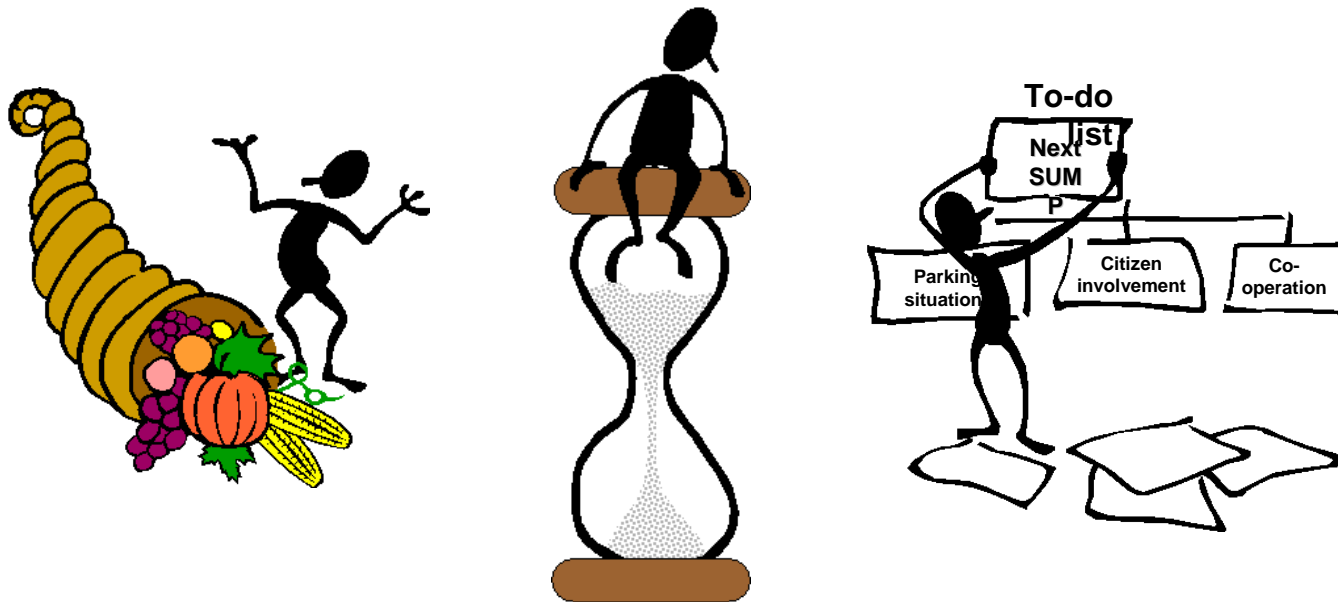


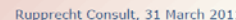
SUSTAINABLE
URBAN MOBILITY
PLANS



10. Ensure proper management & communication
(when implementing the plan)
11. Learn the lesson

Milestone: Final impact assessment concluded







SUSTAINABLE
URBAN MOBILITY
PLANS



Benefits of SUMP



SUMP Benefits

Visible impacts on local level



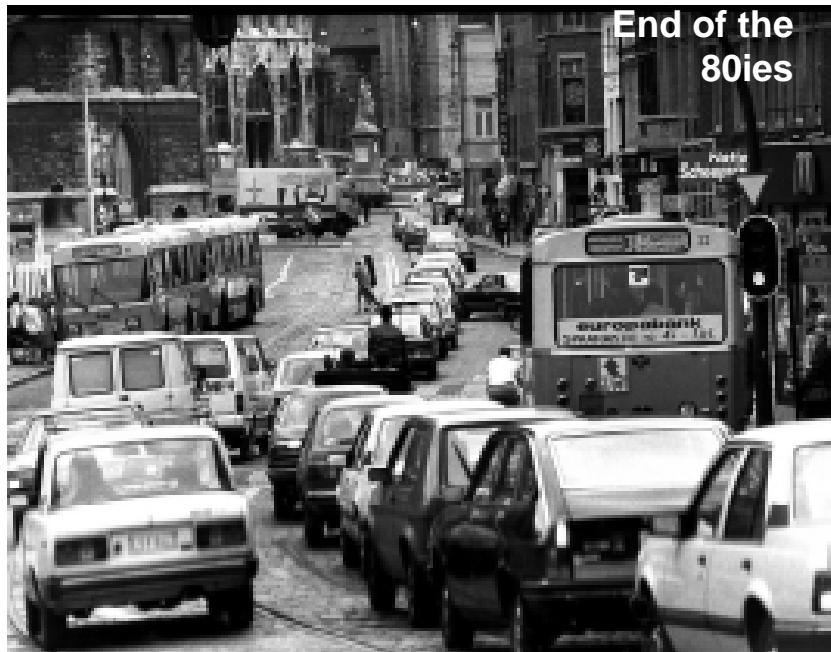
SUSTAINABLE
URBAN MOBILITY
PLANS



- Quality of life & attractive city centres
 - Safer urban environment
 - Stronger economy
 - Social inclusion
 - Avoidance of urban sprawl
 - Healthier citizens
- Becoming visible especially in mid- to long-run

Applying SUMP...

The difference is visible



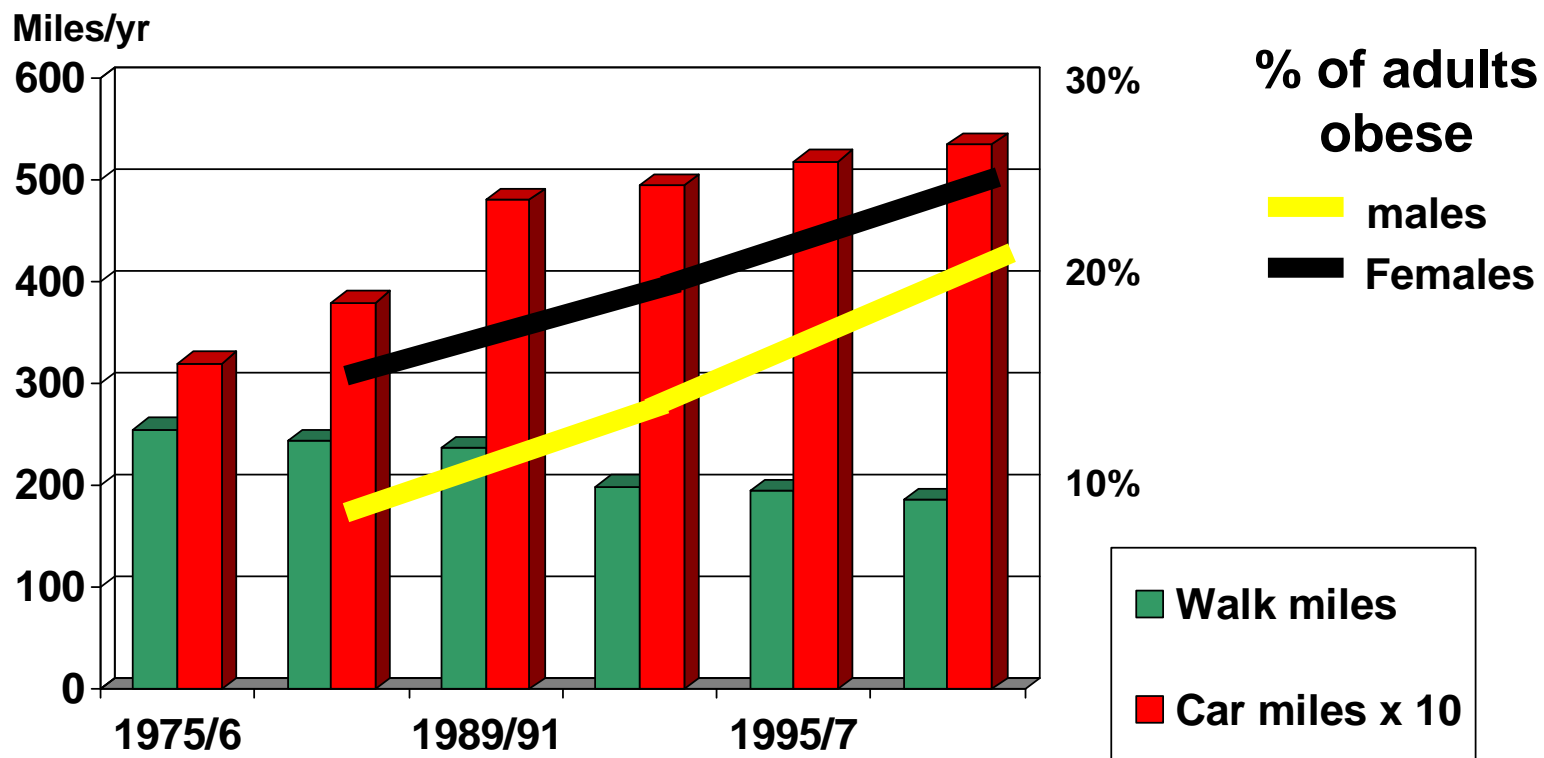
Example Gent:

20 years ago and today - a transformed city



SUMPs and health

UK – travel and obesity



Consultation and participation



- England – SUMPs compulsory from 1999
- Consultation/participation key part of these SUMPs and schemes within them
- Local authorities said consultation:
 - Made schemes of higher quality
 - Made it easier to deliver controversial schemes
 - Reduced opposition/late changes to scheme design
 - Increase political support from elected councillors
 - Allowed them to prioritise spending, set targets

Planning and policy level



- Involvement of citizens and stakeholders
- Integrated planning
- Multidisciplinary approach
- Capacity building
- Cost efficient planning
- Politicians' positive reputation
- Access to EU-funding (conditionality?)
- Supporting international, EU, national goals (e.g. CO₂ emissions)

Helps to obtain funding, fulfil legal requirements



- Can help to meet legal requirements, e.g. EU Air Quality Directive
- Netherlands, France, England – SUMP key to getting transport funding from central government
- Work with different fields, e.g. health, get new money for transport
- Helps to plan transport systematically to allow development of land

SUMP - an effective tool to achieve your strategic objectives



SUSTAINABLE
URBAN MOBILITY
PLANS


- Older style transport planning
 - Which scheme do we want to build?
- SUMP:
 - What do we want to achieve?
 - What's the best way to achieve it?
 - Do we really need to build anything?
 - Who do we consult?
 - How do we measure impacts?
- With SUMP – more likely to achieve what we want
- SUMP gives *reasons* for actions – easier to defend

For you...

Aiming to accelerate the large scale take up of SUMPs by local and regional authorities in Europe, Eltisplus is offering:

- **State-of-the-Art Report** on SUMPs in Europe
- **Guidelines** on the development and implementation of SUMPs
- **Awareness raising events, technical training and experience exchange** workshops in national languages in 31 European countries
- **Case studies and best practice examples**
- www.mobilityplans.eu, including **document library** and **SUMP video**



Thank you for your attention!

Siegfried Rupprecht, Rupprecht Consult

s.rupprecht@rupprecht-consult.eu
+49-221-6060550

www.mobilityplans.eu